



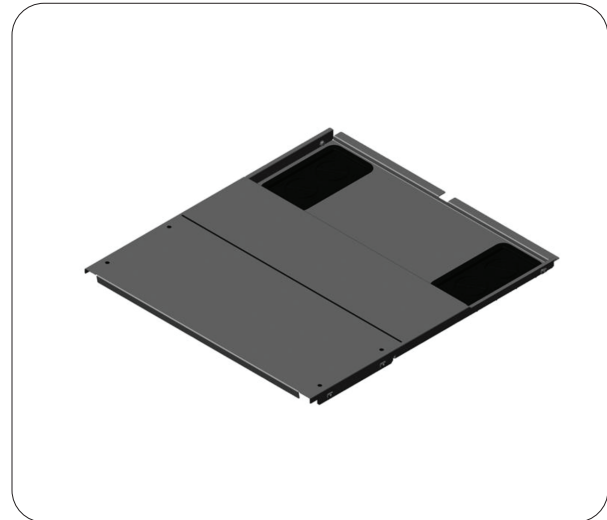
**CHATSWORTH  
PRODUCTS**

## Bottom Panel

### Bottom Panel

Bottom Panel seals the bottom of the cabinet to contain and control airflow in cabinets that are elevated on casters or leveling feet.

- Solid panel with two brush sealed cable openings
- Two-piece design for easy installation, adjusts in depth to fit cabinet
- Two cable openings, in back corners, are 4.5"W x 9"D (114 mm x 228 mm) without cover, sized for large power plugs
- Brush covers over cable openings, protects cables as they pass through bottom panel, provides a 3.9"W x 8.8"D (99 mm x 223 mm) pass through area for cables
- Brush cover is two halves that snap together around cables and forms a seal
- Used in combination with Air Dam and Vertical Exhaust Duct
- Includes: Bottom panel with brush covers, installation brackets and hardware
- Material: Steel bottom panel; brushes are plastic
- Finish: Black or Glacier White; brushes are black
- Select part number to match the width and color of the cabinet
- Fits cabinet frames that are 39.4"D (1000 mm) and deeper



### ORDERING INFORMATION

Part Number	Description	Shipping Weight lb (kg)
39132-X00	Bottom Panel 600mm Cabinet	1 (0.5)
39132-X01	Bottom Panel 700mm Cabinet	1 (0.5)
39132-X02	Bottom Panel 800mm Cabinet	1 (0.5)

X=Color: C=Black, E=Glacier White

**United States & Canada**  
Simi Valley, CA  
800-834-4969  
Toronto, Ontario, Canada  
+905-850-7770  
chatsworth.com  
techsupport@chatsworth.com

**Latin America**  
Mexico City, Mexico  
+52-55-5203-7525  
Toll Free within Mexico  
800-201-7592  
chatsworth.com.co

**Europe**  
Buckinghamshire  
England, UK  
+44-1628-524-834

**Middle East & Africa**  
Dubai, UAE  
+971-4-2602125  
Doha, Qatar  
+974-4-267422

**Asia Pacific**  
Jing'an District,  
Shanghai, China  
+86 21 6880-0266  
chatsworth.com.cn