

# Service Manual

## SERVICE PARTS & DIAGRAMS

### BENDPAK PL-6KT

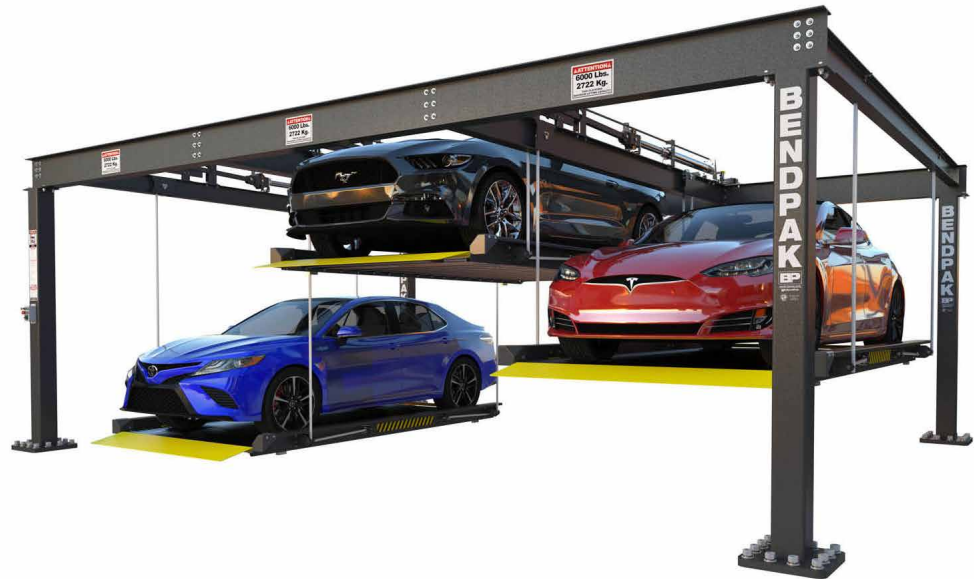
PRODUCT SKU  
**5175154**

DRAWING Nº  
**5260643**

CATEGORY  
**Parking Lift**

VER. B  
**Rev. H**

DATE  
**06.12.2023**



## BendPak.

This guide is a troubleshooting reference used for maintaining and servicing your Bend Pak product. It provides comprehensive information on identifying serviceable parts and components and assists in troubleshooting problems and performing assembly /disassembly procedures.

**BendPak, Inc. Corporate Office**  
1645 Lemonwood Drive  
Santa Paula, CA 93060 USA  
Toll Free US/Canada: 1-800-253-2363  
Fax: 1-805-933-9160  
info@bendpak.com

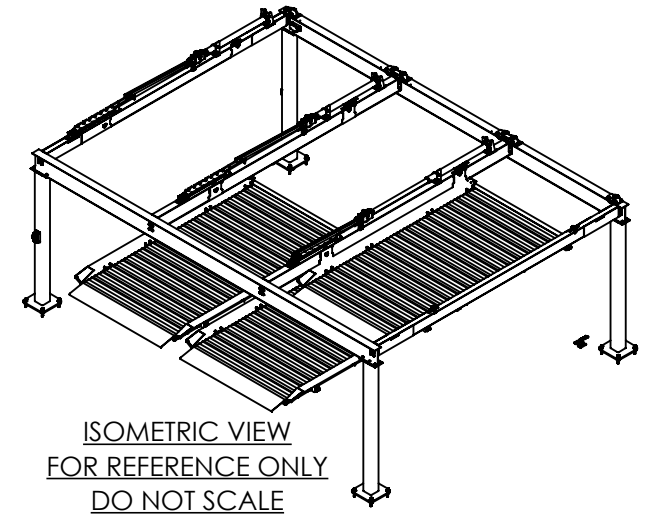
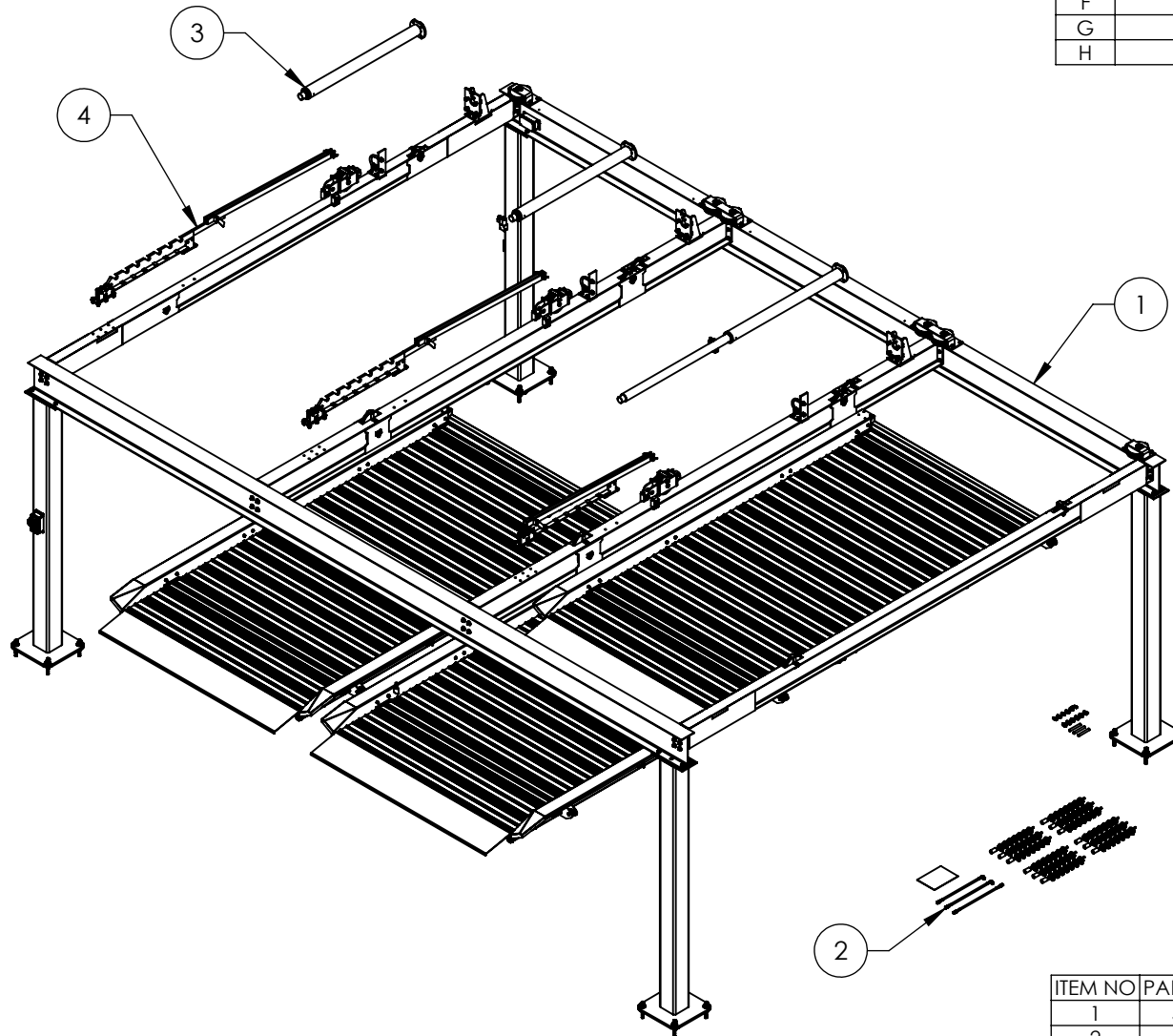
**Customer Service Desk / Warranty**  
Customer Service Representatives  
Office Tel: 1-805-933-9970  
Toll Free US/Canada: 1-800-253-2363  
Fax: 1-805-933-9160  
customerservice@bendpak.com

**Parts Orders**  
Customer Service Representatives  
Office Tel: 1-805-933-9970  
Toll Free US/Canada: 1-800-253-2363  
Fax: 1-805-933-9160  
parts@bendpak.com

**Domestic Sales & Service**  
USA Sales Representatives  
Office Tel: 1-805-933-9970  
Toll Free US/Canada: 1-800-253-2363  
Fax: 1-805-933-9160  
sales@bendpak.com

**International Sales & Service**  
Office Tel: 1-805-933-9970  
Exports Dept: 1-805-933-9970 EXT. 192  
Ext. Toll Free US/Canada: 1-800-253-2363  
Fax: 1-805-933-9160  
bpkexports@bendpak.com

REVISION				
REV	DESCRIPTION	DATE	EDITED BY	ECO#
F	UPDATED BOM REVISION	11/23/2021	TM	01366
G	UPDATED BOM REVISION	09/02/2022	TM	01443
H	UPDATED BOM REVISION	06/05/2023	TM	01497



ITEM NO	PART NUMBER	DESCRIPTION	QTY	REV
1	5245141	PL-6KT SUPERSTRUCTURE	1	C
2	5250333	PL-6KT PARTS BOX	1	B
3	5502048	CYLINDER ASSEMBLY Ø3.250 x47.635, FAST	3	B
4	5216010	PL-6K MULTI SAFETY LATCH BAR ASSEMBLY	3	B

DO NOT SCALE DRAWING

DIMENSIONS ARE IN MM



NAME DATE  
DRAWN CA 10/20/2020

CHECKED

THIRD ANGLE PROJECTION



PROPRIETARY AND CONFIDENTIAL  
THE INFORMATION CONTAINED IN THIS DRAWING IS  
THE SOLE PROPERTY OF BENDPAK INC. ANY  
REPRODUCTION IN PART OR AS A WHOLE WITHOUT  
THE WRITTEN PERMISSION OF BENDPAK INC. IS  
PROHIBITED.

**BendPak**  
1645 LEMONWOOD DR.  
SANTA PAULA, CA 93060

TITLE: PL-6KT PRODUCTION  
LIFT VER B

SIZE DWG. NO. REV  
**A** 5260643 H

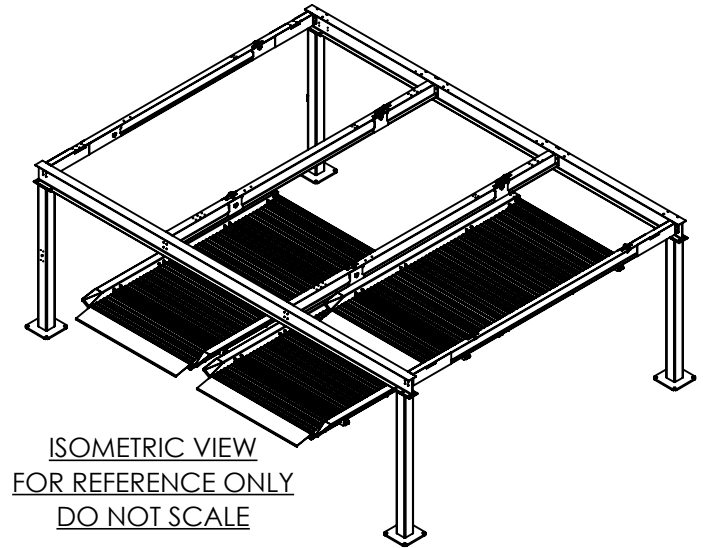
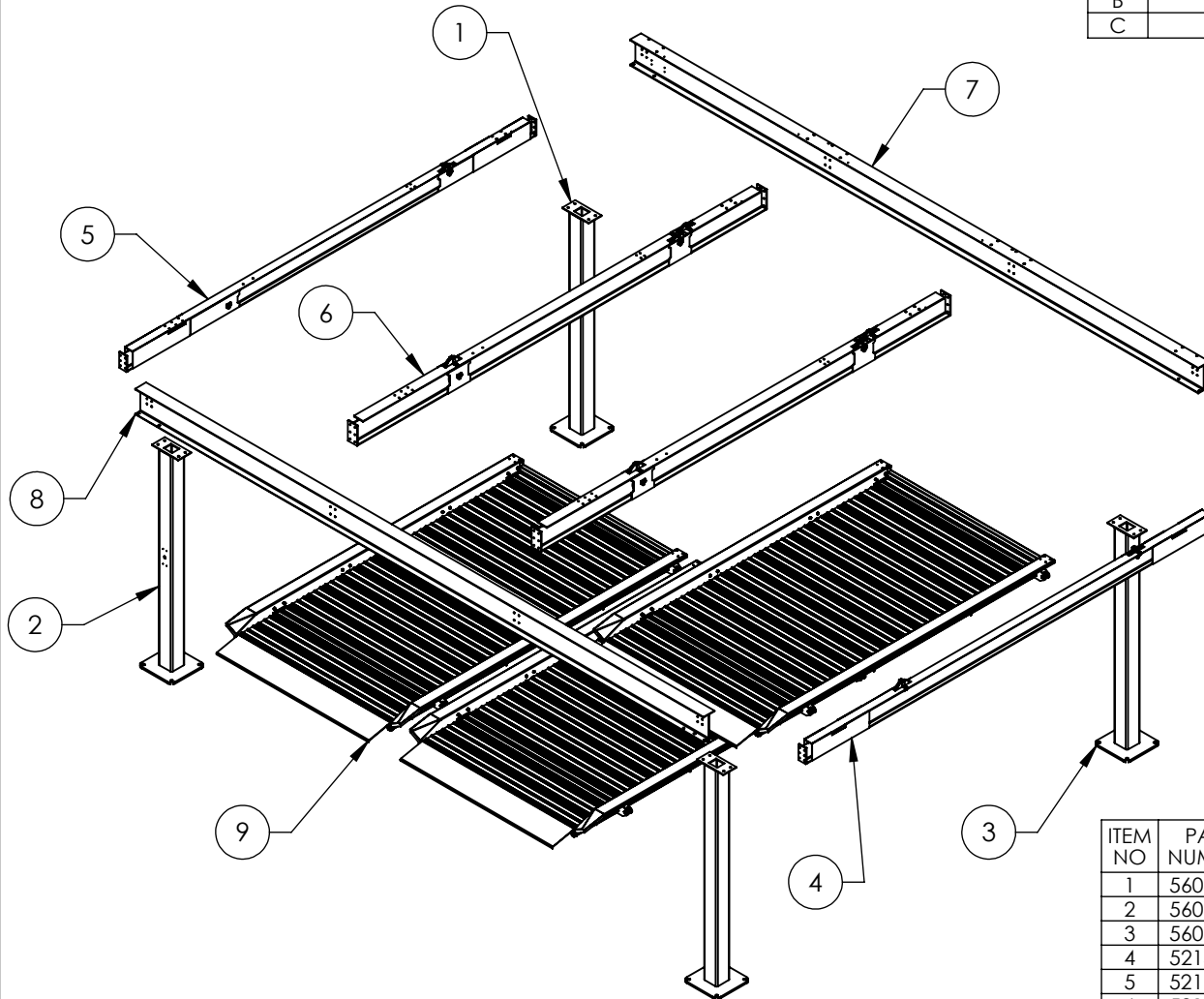
SCALE: 1:60

SHEET 1 OF 3

**NOTE: UNLESS OTHERWISE SPECIFIED.**

1. REFER TO MODEL FOR ADDITIONAL INFORMATION
2. SEE SHIPPING INSTRUCTIONS FOR FINAL PACKAGING
3. SEE COLORS & GRAPHICS FOR LABEL PLACEMENT

REVISION				
REV	DESCRIPTION	DATE	EDITED BY	ECO#
A	PRODUCTION RELEASE, DERIVED FROM 5245052	10/20/2020	CA	01218
B	UPDATED BOM REVISIONS	08/11/2021	TM	01324
C	UPDATED BOM REVISIONS	06/02/2023	TM	01497



ITEM NO	PART NUMBER	DESCRIPTION	QTY	REV
1	5601204	PL-6K POWER POST WELDMENT	1	B
2	5601205	PL-6K CONTROL POST WELDMENT	1	B
3	5601206	PL-6K CLOSEOUT POST WELDMENT	2	B
4	5215683	PL-6K CLOSEOUT CROSSBEAM ASSEMBLY	1	G
5	5216013	PL-6K POWER SIDE CLOSEOUT CROSSBEAM ASSEMBLY	1	B
6	5216012	PL-6K CENTER CROSSBEAM ASSEMBLY	2	B
7	5770121	PL-6KT FRONT BEAM	1	C
8	5770122	PL-6KT REAR BEAM	1	B
9	5215684	PL-6K RAMP ASSEMBLY	3	K

DO NOT SCALE DRAWING

NAME	DATE
DRAWN CA	10/20/2020
CHECKED	

DIMENSIONS ARE IN MM



THIRD ANGLE PROJECTION

PROPRIETARY AND CONFIDENTIAL  
THE INFORMATION CONTAINED IN THIS DRAWING IS THE SOLE PROPERTY OF BENDPAK INC. ANY REPRODUCTION IN PART OR AS A WHOLE WITHOUT THE WRITTEN PERMISSION OF BENDPAK INC. IS PROHIBITED.

**BendPak**  
1645 LEMONWOOD DR.  
SANTA PAULA, CA 93060

TITLE:  
**PL-6KT SUPERSTRUCTURE**

SIZE DWG. NO. REV  
**A** 5245141 C

SCALE: 1:70

SHEET 1 OF 1

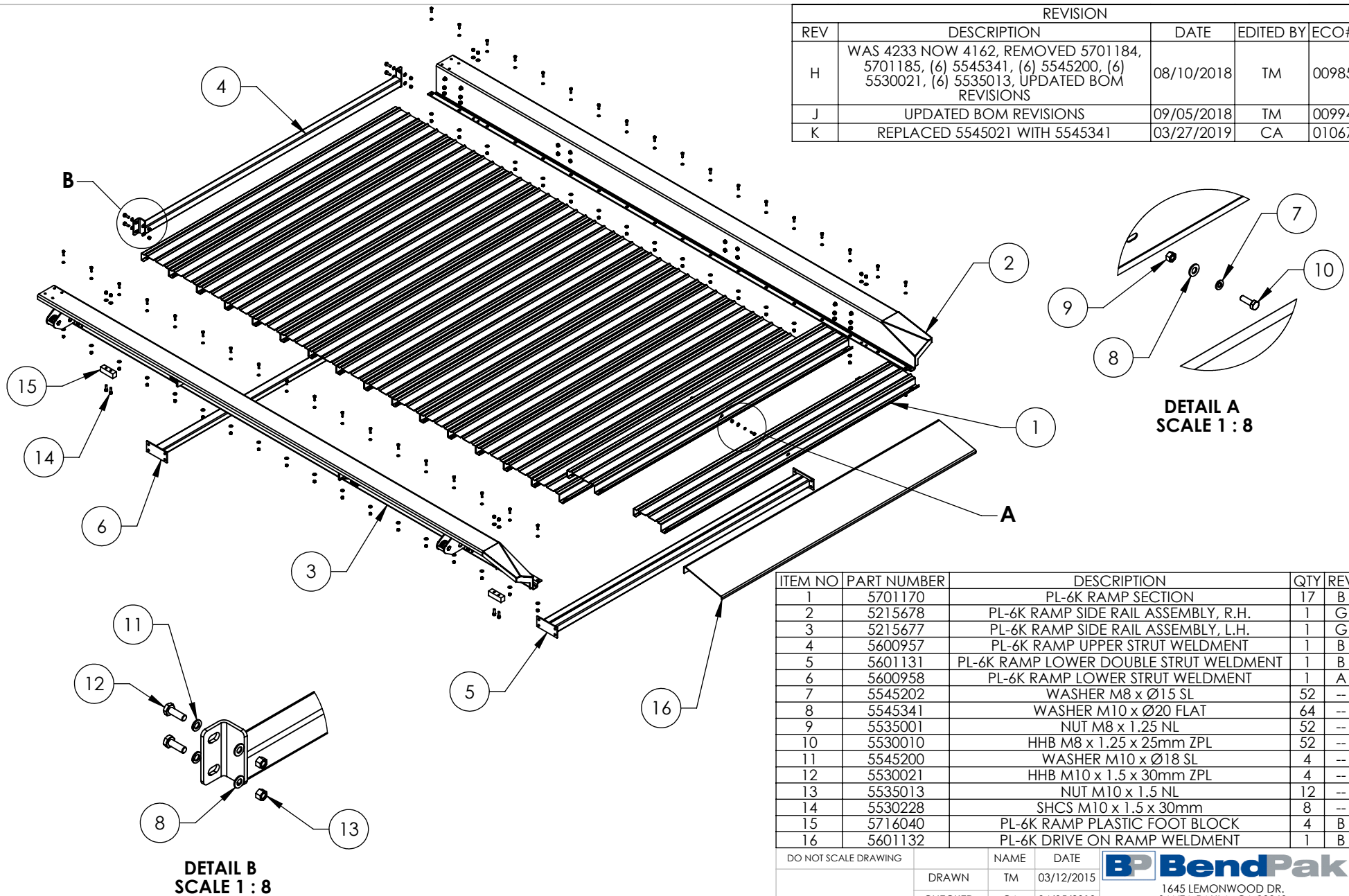
WHERE USED  
PL-6KT

**NOTE: UNLESS OTHERWISE SPECIFIED.**

- REFER TO MODEL FOR ADDITIONAL INFORMATION
- SEE SHIPPING INSTRUCTIONS FOR FINAL PACKAGING

NEXT ASSEMBLY  
5260643

REVISION				
REV	DESCRIPTION	DATE	EDITED BY	ECO#
H	WAS 4233 NOW 4162, REMOVED 5701184, 5701185, (6) 5545341, (6) 5545200, (6) 5530021, (6) 5535013, UPDATED BOM REVISIONS	08/10/2018	TM	00985
J	UPDATED BOM REVISIONS	09/05/2018	TM	00994
K	REPLACED 5545021 WITH 5545341	03/27/2019	CA	01067



ITEM NO	PART NUMBER	DESCRIPTION	QTY	REV
1	5701170	PL-6K RAMP SECTION	17	B
2	5215678	PL-6K RAMP SIDE RAIL ASSEMBLY, R.H.	1	G
3	5215677	PL-6K RAMP SIDE RAIL ASSEMBLY, L.H.	1	G
4	5600957	PL-6K RAMP UPPER STRUT WELDMENT	1	B
5	5601131	PL-6K RAMP LOWER DOUBLE STRUT WELDMENT	1	B
6	5600958	PL-6K RAMP LOWER STRUT WELDMENT	1	A
7	5545202	WASHER M8 x Ø15 SL	52	--
8	5545341	WASHER M10 x Ø20 FLAT	64	--
9	5535001	NUT M8 x 1.25 NL	52	--
10	5530010	HHB M8 x 1.25 x 25mm ZPL	52	--
11	5545200	WASHER M10 x Ø18 SL	4	--
12	5530021	HHB M10 x 1.5 x 30mm ZPL	4	--
13	5535013	NUT M10 x 1.5 NL	12	--
14	5530228	SHCS M10 x 1.5 x 30mm	8	--
15	5716040	PL-6K RAMP PLASTIC FOOT BLOCK	4	B
16	5601132	PL-6K DRIVE ON RAMP WELDMENT	1	B

WHERE USED
PL-6KT

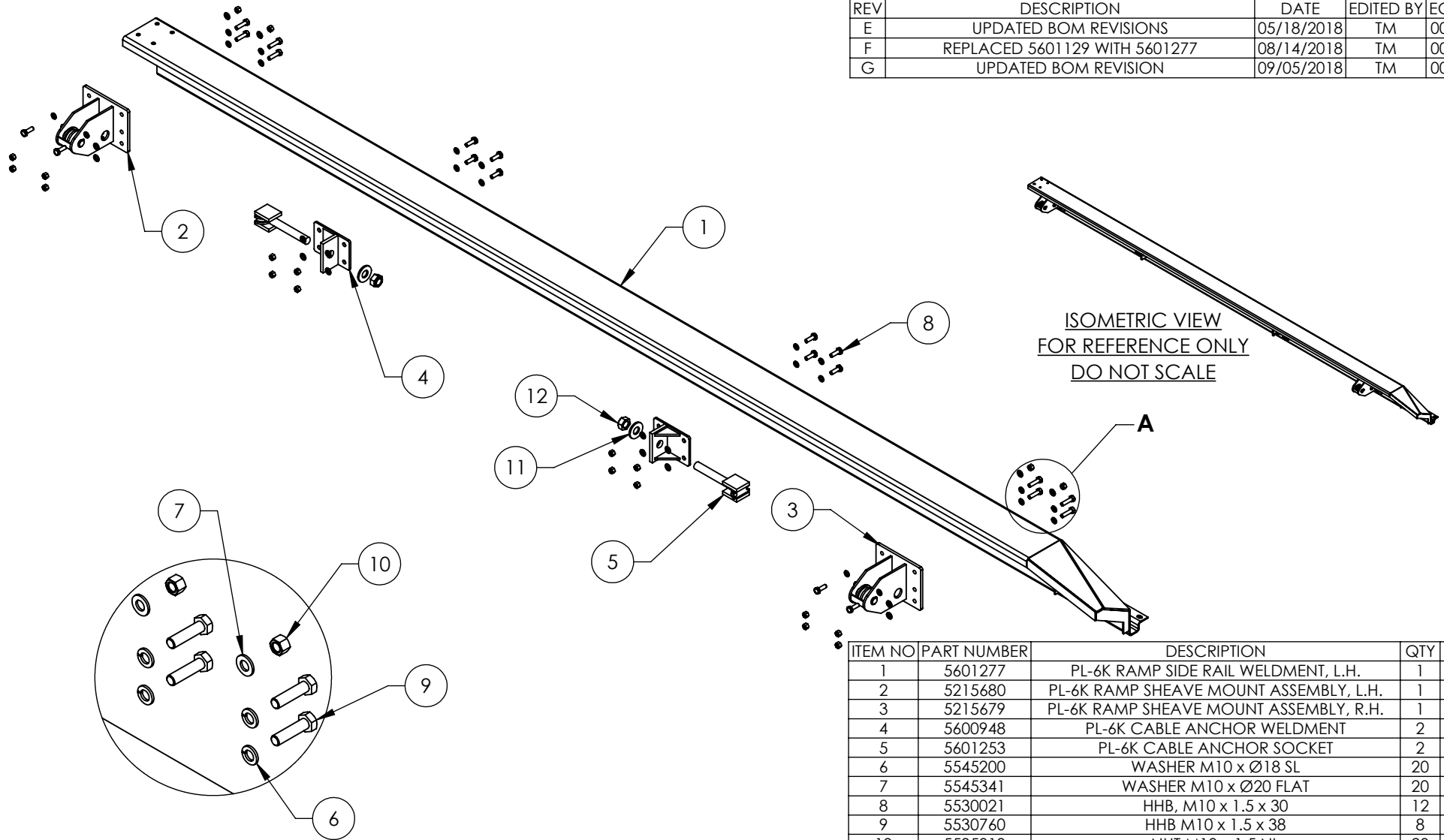
**NOTE: UNLESS OTHERWISE SPECIFIED.**

1. REFER TO MODEL FOR ADDITIONAL INFORMATION
2. SEE SHIPPING INSTRUCTIONS FOR FINAL PACKAGING

NEXT ASSEMBLY  
5245141

DO NOT SCALE DRAWING		NAME	DATE	<p>1645 LEMONWOOD DR. SANTA PAULA, CA 93060</p>
DIMENSIONS ARE IN MM		DRAWN	TM 03/12/2015	
		CHECKED	CA 04/05/2019	
		THIRD ANGLE PROJECTION		
<p>PROPRIETARY AND CONFIDENTIAL THE INFORMATION CONTAINED IN THIS DRAWING IS THE SOLE PROPERTY OF BENDPAK INC. ANY REPRODUCTION IN PART OR AS A WHOLE WITHOUT THE WRITTEN PERMISSION OF BENDPAK INC. IS PROHIBITED.</p>				<p>TITLE: <b>PL-6K RAMP ASSEMBLY</b></p>
SIZE		DWG. NO.		REV
<b>A</b>		5215684		K
SCALE: 1:30				SHEET 1 OF 2

REVISION				
REV	DESCRIPTION	DATE	EDITED BY	ECO#
E	UPDATED BOM REVISIONS	05/18/2018	TM	00948
F	REPLACED 5601129 WITH 5601277	08/14/2018	TM	00985
G	UPDATED BOM REVISION	09/05/2018	TM	00994



**DETAIL A**  
**SCALE 1 : 5**

WHERE USED
PL-6KDT
PL-6KDTX-21
PL-6KDW
PL-6KT

**NOTE: UNLESS OTHERWISE SPECIFIED.**

1. REFER TO MODEL FOR ADDITIONAL INFORMATION
2. SEE SHIPPING INSTRUCTIONS FOR FINAL PACKAGING
3. ASSEMBLE ITEMS AS SHOWN

NEXT ASSEMBLY  
5215684

ITEM NO	PART NUMBER	DESCRIPTION	QTY	REV
1	5601277	PL-6K RAMP SIDE RAIL WELDMENT, L.H.	1	A
2	5215680	PL-6K RAMP SHEAVE MOUNT ASSEMBLY, L.H.	1	B
3	5215679	PL-6K RAMP SHEAVE MOUNT ASSEMBLY, R.H.	1	B
4	5600948	PL-6K CABLE ANCHOR WELDMENT	2	B
5	5601253	PL-6K CABLE ANCHOR SOCKET	2	B
6	5545200	WASHER M10 x Ø18 SL	20	--
7	5545341	WASHER M10 x Ø20 FLAT	20	--
8	5530021	HHB, M10 x 1.5 x 30	12	--
9	5530760	HHB M10 x 1.5 x 38	8	--
10	5535013	NUT M10 x 1.5 NL	20	--
11	5545345	WASHER M22 x 50mm FLAT	2	--
12	5535011	NUT M22 x 2.5 NL	2	--

DO NOT SCALE DRAWING

DIMENSIONS ARE IN MM



NAME	DATE
DRAWN TM	02/04/2015
CHECKED CA	09/07/2018

THIRD ANGLE PROJECTION



PROPRIETARY AND CONFIDENTIAL  
THE INFORMATION CONTAINED IN THIS DRAWING IS  
THE SOLE PROPERTY OF BENDPAK INC. ANY  
REPRODUCTION IN PART OR AS A WHOLE WITHOUT  
THE WRITTEN PERMISSION OF BENDPAK INC. IS  
PROHIBITED.

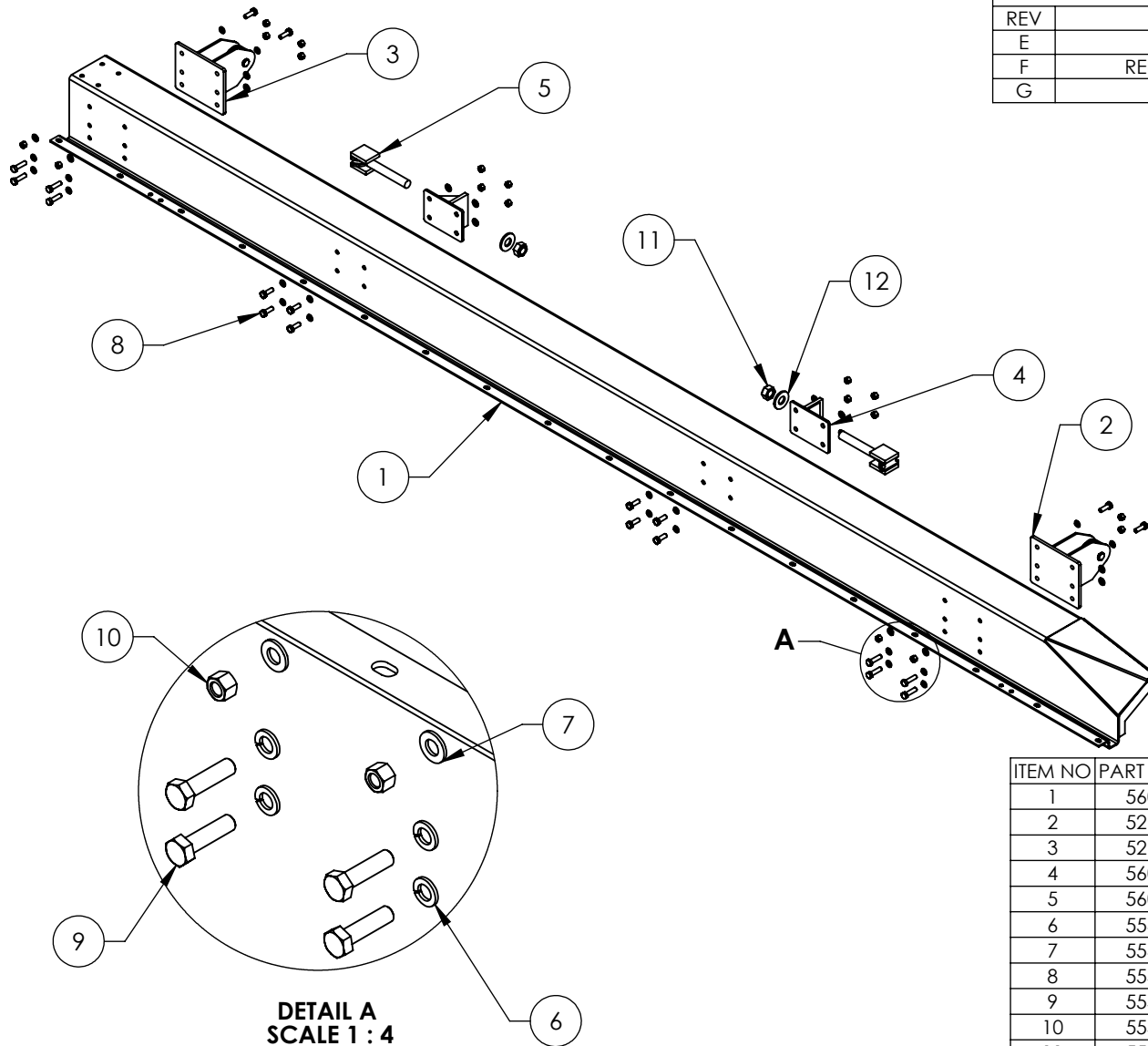
BendPak®	
1645 LEMONWOOD DR. SANTA PAULA, CA 93060	

TITLE:  
PL-6K RAMP SIDE RAIL  
ASSEMBLY, L.H.

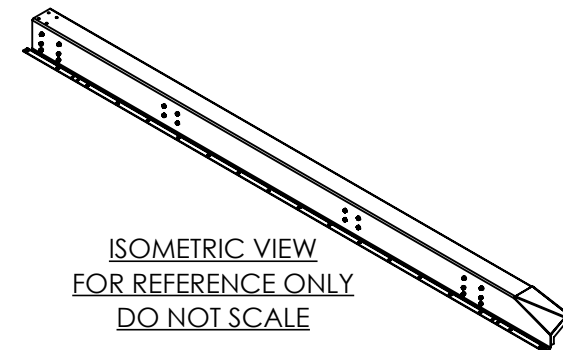
SIZE	DWG. NO.	REV
A	5215677	G

SCALE: 1:16

SHEET 1 OF 1



**DETAIL A  
SCALE 1 : 4**



REVISION				
REV	DESCRIPTION	DATE	EDITED BY	ECO#
E	UPDATED BOM REVISIONS	05/18/2018	TM	00948
F	REPLACED 5601130 WITH 5601276	08/14/2018	TM	00985
G	UPDATED BOM REVISION	09/05/2018	TM	00994

ITEM NO	PART NUMBER	DESCRIPTION	QTY	REV
1	5601276	PL-6K RAMP SIDE RAIL WELDMENT, R.H.	1	A
2	5215680	PL-6K RAMP SHEAVE MOUNT ASSEMBLY, L.H.	1	B
3	5215679	PL-6K RAMP SHEAVE MOUNT ASSEMBLY, R.H.	1	B
4	5600948	PL-6K CABLE ANCHOR WELDMENT	2	B
5	5601253	PL-6K CABLE ANCHOR SOCKET	2	B
6	5545200	WASHER M10 x Ø18 SL	20	--
7	5545341	WASHER M10 x Ø20 FLAT	20	--
8	5530021	HHB, M10 x 1.5 x 30	12	--
9	5530760	HHB M10 x 1.5 x 38	8	--
10	5535013	NUT M10 x 1.5 NL	20	--
11	5535011	NUT M22 x 2.5 NL	2	--
12	5545345	WASHER M22 x 50mm FLAT	2	--

WHERE USED
PL-6KDT
PL-6KDTX-21
PL-6KDW
PL-6KT

**NOTE: UNLESS OTHERWISE SPECIFIED.**

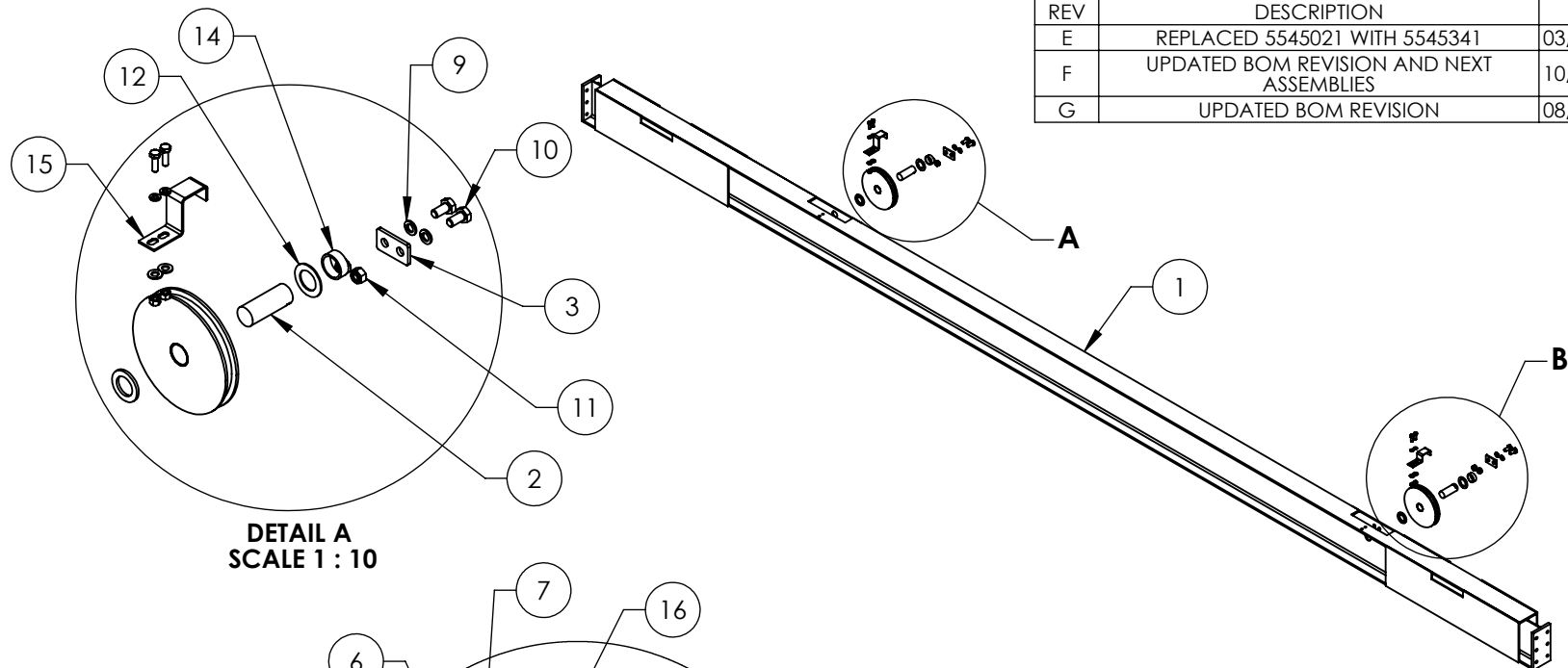
1. REFER TO MODEL FOR ADDITIONAL INFORMATION
2. SEE SHIPPING INSTRUCTIONS FOR FINAL PACKAGING
3. ASSEMBLE ITEMS AS SHOWN

NEXT ASSEMBLY  
5215684

DO NOT SCALE DRAWING		NAME	DATE	 1645 LEMONWOOD DR. SANTA PAULA, CA 93060	
DIMENSIONS ARE IN MM		DRAWN	TM		
THIRD ANGLE PROJECTION		CHECKED	CA		
				<b>TITLE:</b> PL-6K RAMP SIDE RAIL ASSEMBLY, R.H.	
		<b>SIZE</b> DWG. NO.		<b>REV</b>	
		<b>A</b> 5215678		<b>G</b>	
<small>THE INFORMATION CONTAINED IN THIS DRAWING IS THE SOLE PROPERTY OF BENDPAK INC. ANY REPRODUCTION IN PART OR AS A WHOLE WITHOUT THE WRITTEN PERMISSION OF BENDPAK INC. IS PROHIBITED.</small>		<b>SCALE:</b> 1:18		<b>SHEET 1 OF 1</b>	



REVISION				
REV	DESCRIPTION	DATE	EDITED BY	ECO#
E	REPLACED 5545021 WITH 5545341	03/27/2019	CA	01067
F	UPDATED BOM REVISION AND NEXT ASSEMBLIES	10/23/2020	CA	01218
G	UPDATED BOM REVISION	08/11/2021	TM	01324



**DETAIL A**  
**SCALE 1 : 10**

**DETAIL B**  
**SCALE 1 : 10**

WHERE USED
PL-6KT

**NOTE: UNLESS OTHERWISE SPECIFIED.**

1. REFER TO MODEL FOR ADDITIONAL INFORMATION
2. SEE SHIPPING INSTRUCTIONS FOR FINAL PACKAGING
3. ASSEMBLE ITEMS AS SHOWN

NEXT ASSEMBLY
5245141

ITEM NO	PART NUMBER	DESCRIPTION	QTY	REV
1	5600956	PL-6K CLOSEOUT CROSSBEAM WELDMENT	1	E
2	5746688	PL-6K CROSSBEAM CLOSEOUT SHEAVE PIN	2	C
3	5736865	PL-6K SHEAVE PIN BOLT PLATE	2	A
4	5215694	PL-6K SINGLE SHEAVE ASSEMBLY	2	A
5	5545341	WASHER M10 x Ø20 FLAT	4	--
6	5545202	WASHER M8 x Ø15 SL	4	--
7	5530010	HHB M8 x 1.25 x 25mm ZPL	4	--
8	5535001	NUT M8 x 1.25 NL	4	--
9	5545201	WASHER, M12 SPRING LOCK	4	--
10	5530029	HHB M12 x 1.75 x 25mm	4	--
11	5535012	NUT M12 x 1.75 NL	4	--
12	5746687	PL-6K CROSSBEAM SHEAVE WASHER	2	A
13	5746686	PL-6K CROSSBEAM SHEAVE WASHER, LARGE	2	A
14	5755152	PL-6K CROSSBEAM SHEAVE SPACER	2	A
15	5701186	PL-6K CROSSBEAM CABLE RETAINER	1	A
16	5701187	PL-6K CROSSBEAM CABLE RETAINER, SMALL	1	A

DO NOT SCALE DRAWING

DIMENSIONS ARE IN MM



NAME	DATE
DRAWN TM	02/27/2015
CHECKED OR	8/18/2021

THIRD ANGLE PROJECTION

PROPRIETARY AND CONFIDENTIAL  
THE INFORMATION CONTAINED IN THIS DRAWING IS THE SOLE PROPERTY OF BENDPAK INC. ANY REPRODUCTION IN PART OR AS A WHOLE WITHOUT THE WRITTEN PERMISSION OF BENDPAK INC. IS PROHIBITED.

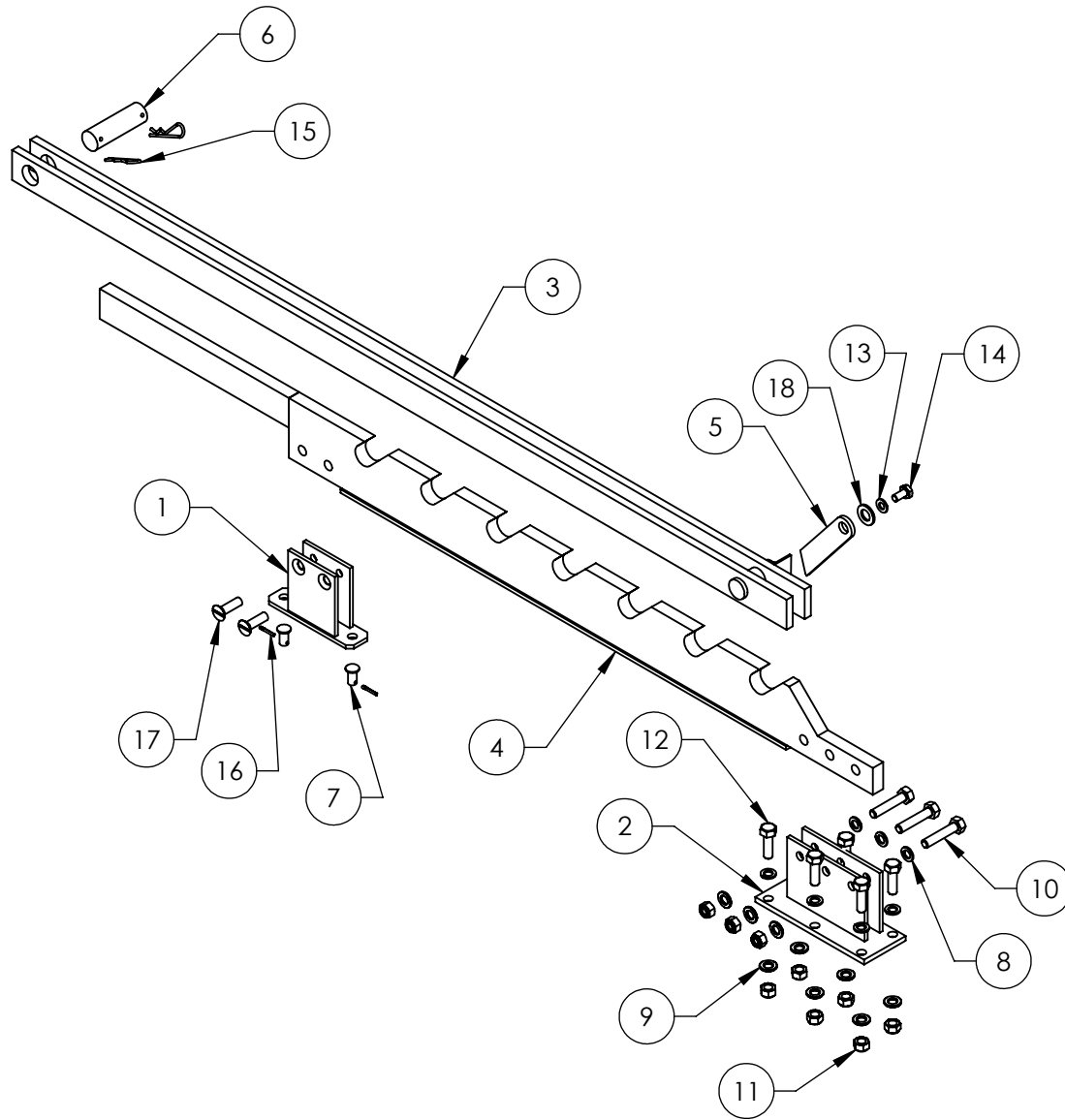
**BendPak**  
1645 LEMONWOOD DR.  
SANTA PAULA, CA 93060

TITLE: PL-6K CLOSEOUT  
CROSSBEAM ASSEMBLY

SIZE	DWG. NO.	REV
A	5215683	G

SCALE: 1:30

SHEET 1 OF 1



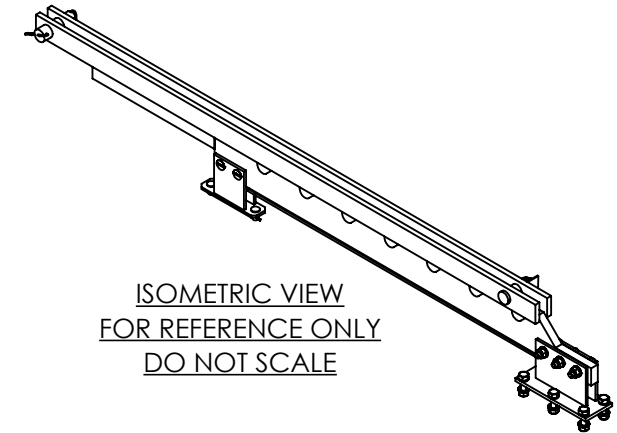
WHERE USED
PL-6KT

**NOTE: UNLESS OTHERWISE SPECIFIED.**

1. REFER TO MODEL FOR ADDITIONAL INFORMATION
2. 5736871 MUST SWING FREELY
3. ASSEMBLE ITEMS AS SHOWN
4. SEE SHIPPING INSTRUCTIONS FOR FINAL PACKAGING

NEXT ASSEMBLY  
5260643

REVISION				
REV	DESCRIPTION	DATE	EDITED BY	ECO#
A	PRODUCTION RELEASE, DERIVED FROM 5215687	10/19/2020	CA	01218
B	UPDATED BOM REVISION	09/02/2022	TM	01443



ISOMETRIC VIEW  
FOR REFERENCE ONLY  
DO NOT SCALE

ITEM NO	PART NUMBER	DESCRIPTION	QTY	REV
1	5600967	PL-6K SAFETY BAR BRACKET WELDMENT	1	A
2	5600966	PL-6K SAFETY BAR REAR BRACKET WELDMENT	1	A
3	5601602	PL-6K MULTI SAFETY LATCH BAR WELDMENT	1	A
4	5601603	PL-6K MULTI SAFETY LATCH TRIP PLATE WELDMENT	1	B
5	5736871	PL-6K SAFETY LATCH	1	A
6	5746367	PL-6K SAFETY LATCH BAR PIN	1	A
7	5746171	PL-6K SAFETY BRACKET PIN	2	A
8	5545201	WASHER, M12 SPRING LOCK	9	--
9	5545347	WASHER M12 x 24mm FLAT, CL 8.8	9	--
10	5530323	HHB M12 x 1.75 x 60 CL 10.9	3	--
11	5535012	NUT M12 x 1.75 NL	9	--
12	5530116	HHB M12 x 1.75 x 40	6	--
13	5545341	WASHER M10 x Ø20 FLAT	1	--
14	5530267	HHB, M10 x 1.5 x 20	1	--
15	5505020	HAIR PIN 1/8" x 2 7/8"	2	--
16	5505006	COTTER PIN Ø3.2 x 20mm	2	--
17	5530273	FHS M12 x 1.75 x 40	2	--
18	5545025	WASHER, M16 x 30mm FLAT	1	--

DO NOT SCALE DRAWING

DIMENSIONS ARE IN MM



NAME	DATE
DRAWN CA	10/19/2020
CHECKED OR	9/7/2022

THIRD ANGLE PROJECTION



PROPRIETARY AND CONFIDENTIAL  
THE INFORMATION CONTAINED IN THIS DRAWING IS  
THE SOLE PROPERTY OF BENDPAK INC. ANY  
REPRODUCTION IN PART OR AS A WHOLE WITHOUT  
THE WRITTEN PERMISSION OF BENDPAK INC. IS  
PROHIBITED.

**BendPak**  
1645 LEMONWOOD DR.  
SANTA PAULA, CA 93060

TITLE: PL-6K MULTI SAFETY  
LATCH BAR ASSEMBLY

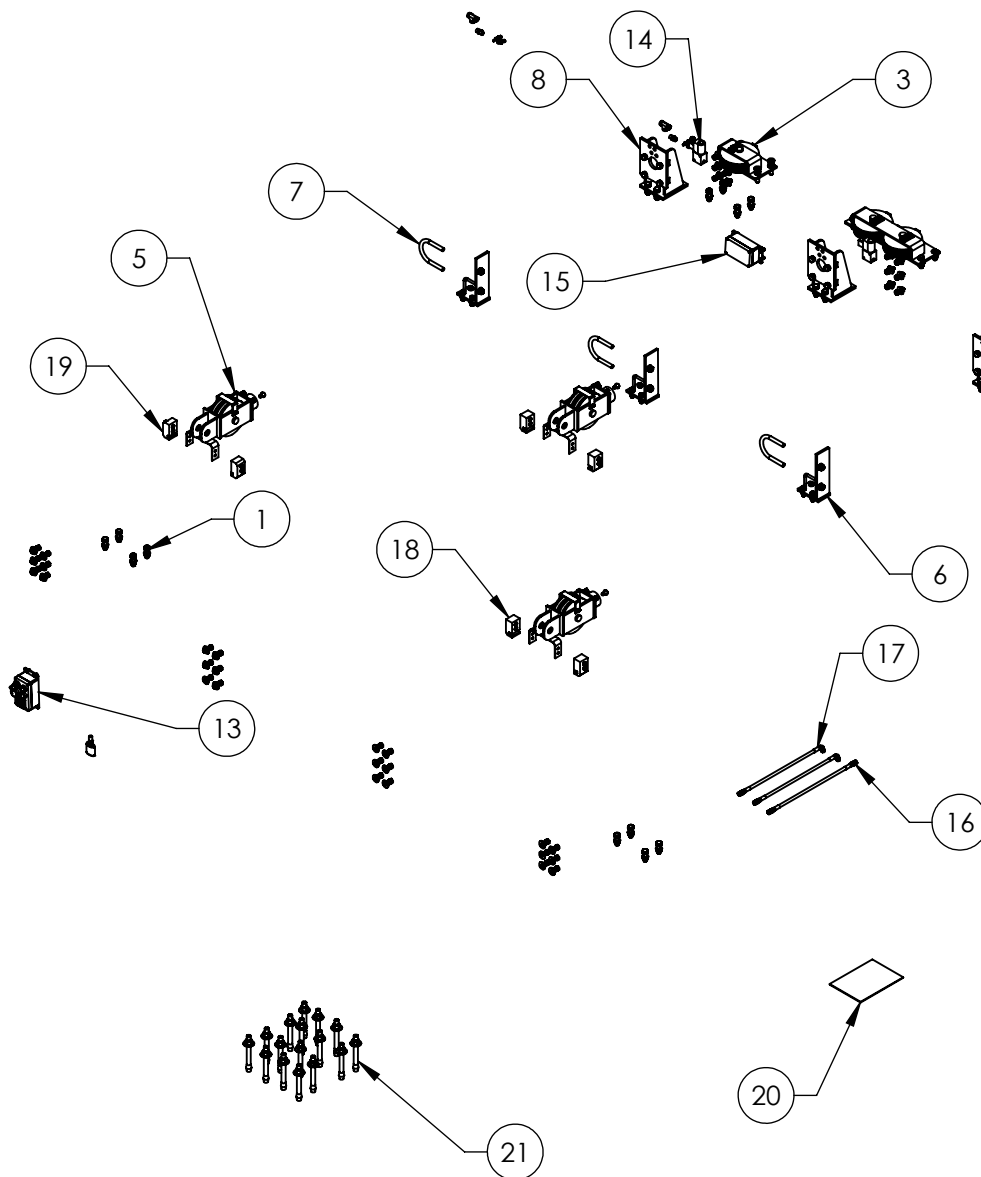
SIZE	DWG. NO.	REV
A	5216010	B

SCALE: 1:10

SHEET 1 OF 1



REVISION				
REV	DESCRIPTION	DATE	EDITED BY	ECO#
A	PRODUCTION RELEASE, DERIVED FROM 5250262	10/20/2020	CA	01218
B	UPDATED BOM REVISION	10/20/2021	OR	01357



ITEM NO	PART NUMBER	DESCRIPTION	QTY	REV
1	5174055	PL-6KT PARTS BAG	1	A
2	5215674	PL-6K 4-SHEAVE MOUNT ASSEMBLY	2	C
3	5215672	PL-6K 2-SHEAVE MOUNT ASSEMBLY, L.H.	1	C
4	5215671	PL-6K 2-SHEAVE MOUNT ASSEMBLY, R.H.	1	C
5	5216011	PL-6K CYLINDER SHEAVE MOUNT ASSEMBLY, SLIDE	3	A
6	5601606	PL-6K CYLINDER SUPPORT WELDMENT	3	A
7	5530271	M16 x 2.0 U-BOLT	3	A
8	5601605	PL-6K CYLINDER/CABLE MOUNT WELDMENT	3	A
9	5595637	CABLE ASSEMBLY Ø12 x 7542mm	3	A
10	5595685	CABLE ASSEMBLY Ø12 x 10544mm	3	A
11	5595686	CABLE ASSEMBLY Ø12 x 12260mm	3	A
12	5595687	CABLE ASSEMBLY Ø12 x 15324mm	3	A
13	5215710	PL-6KT CONTROL BOX ASSEMBLY	1	C
14	5590245	2 WAY D.B. VALVE 24V AC/DC COIL	3	--
15	5520028	PL-6K CONTROL BOX	1	B
16	5570146	HYDRAULIC HOSE ASSEMBLY Ø6.35 x 2360mm DS	1	A
17	5570102	HYDRAULIC HOSE ASSEMBLY Ø6.35 x 2787mm SB	2	A
18	5716067	PL-6K POLYETHYLENE SLIDE BLOCK, WIDE	4	A
19	5716068	PL-6K POLYETHYLENE SLIDE BLOCK, NARROW	2	A
20	5900056	PL-6K INSTALLATION MANUAL	1	--
21	5530337	AB 3/4" x 6.3"	16	--

WHERE USED  
PL-6KT

**NOTE: UNLESS OTHERWISE SPECIFIED.**

- REFER TO MODEL FOR ADDITIONAL INFORMATION
- SEE SHIPPING INSTRUCTIONS FOR FINAL PACKAGING

NEXT ASSEMBLY  
5260643

DO NOT SCALE DRAWING

DIMENSIONS ARE IN MM



NAME DATE  
DRAWN CA 10/20/2020

CHECKED  
THIRD ANGLE PROJECTION



PROPRIETARY AND CONFIDENTIAL  
THE INFORMATION CONTAINED IN THIS DRAWING IS THE SOLE PROPERTY OF BENDPAK INC. ANY REPRODUCTION IN PART OR AS A WHOLE WITHOUT THE WRITTEN PERMISSION OF BENDPAK INC. IS PROHIBITED.

**BendPak**  
1645 LEMONWOOD DR.  
SANTA PAULA, CA 93060

TITLE:  
PL-6KT PARTS BOX

SIZE DWG. NO. REV  
**A** 5250333 B

SCALE: 1:35

SHEET 1 OF 1

REVISION				
REV	DESCRIPTION	DATE	EDITED BY	ECO#
A	PRODUCTION RELEASE, DERIVED FROM 5174013	10/20/2020	CA	01218



ITEM NO	PART NUMBER	DESCRIPTION	QTY	REV
1	5535008	NUT M16 x 2 NL	64	--
2	5535012	NUT M12x1.75 NL	66	--
3	5545029	WASHER M16 SL	52	--
4	5545201	WASHER, M12 SPRING LOCK	61	--
5	5545025	WASHER M16 x 30mm FLAT	64	--
6	5545347	WASHER, M12 FLAT WASHER	12	--
7	5535131	HHB M16 x 2.0 x 50	40	--
8	5530116	HHB M12 x 1.75 x 40	60	--
9	5530352	FHSS M16 x 2.0 x 45 CL 8.8	6	--
10	5530272	HHB M16 x 2.0 x 55	12	--
11	5530029	HHB M12 x 1.75 x 25	6	--
12	5530791	PHPS M6 x 1.0 x 16mm	4	--
13	5545027	WASHER M12 x Ø37 x 3mm	48	--
14	5530318	PHPS M6 x 1 x 25mm	4	--
15	5535112	NUT M6 x 1.0	4	--
16	5550142	FTG NPL -06 ORB x -06 F NPT	6	--
17	5550100	FTG NPL -04 JIC x -06 NPT	5	--
18	5550103	FTG ELB -04 JIC -06 ORB	1	--
19	5550136	FTG TEE -06 NPT x -06 F NPT x -06 F NPT	2	--
20	5550128	FTG NPL -06 NPT x -06 NPT	2	--
21	5505026	1/2" PIPE STRAP Ø20.6mm	4	--
22	5535357	NUT M6 x 1.0 NL	4	--
23	5530756	HHB M6 x 1 x 25	4	--
24	5755054	PIPE, 3/8-18 NPT	3	A
25	5580012	LIQUID PTFE THREAD SEALANT 50ml	1	--
26	5530070	SHCS M10 x 1.5 x 45mm	12	--
27	5535998	NUT M10 x 1.5	12	--

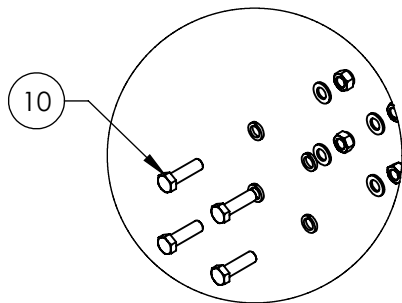
WHERE USED  
PL-6KT

**NOTE: UNLESS OTHERWISE SPECIFIED.**

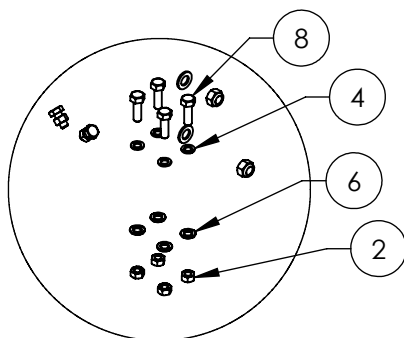
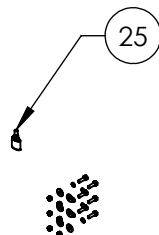
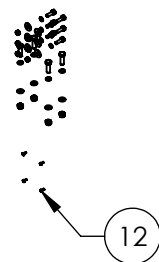
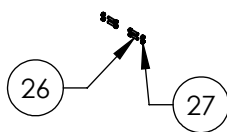
1. REFER TO MODEL FOR ADDITIONAL INFORMATION
2. SEE SHIPPING INSTRUCTIONS FOR FINAL PACKAGING

NEXT ASSEMBLY  
5250333

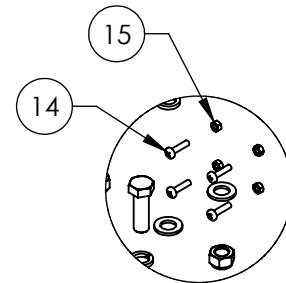
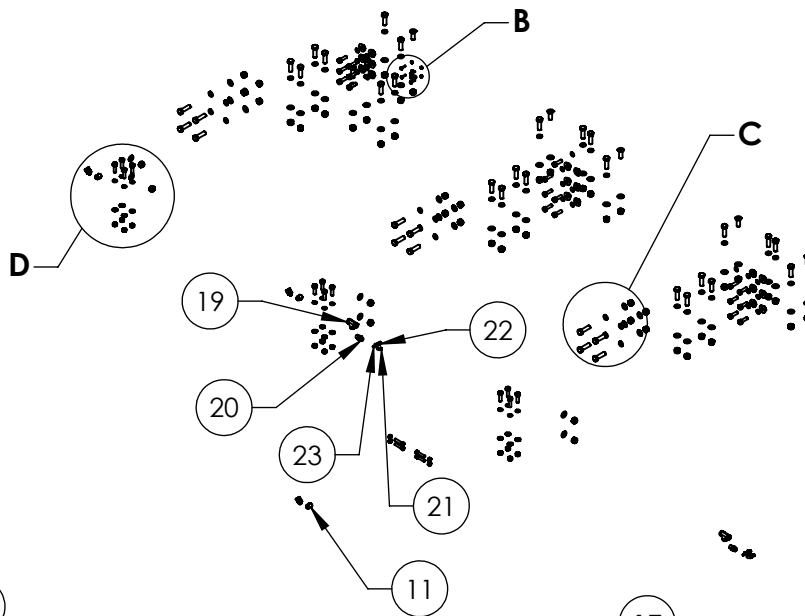
DO NOT SCALE DRAWING		NAME	DATE	<p>1645 LEMONWOOD DR. SANTA PAULA, CA 93060</p>
DRAWN		CA	10/20/2020	
CHECKED		OR	11/10/2020	
DIMENSIONS ARE IN MM		THIRD ANGLE PROJECTION		TITLE:
				PL-6KT PARTS BAG
		<small>PROPRIETARY AND CONFIDENTIAL</small> <small>THE INFORMATION CONTAINED IN THIS DRAWING IS THE SOLE PROPERTY OF BENDPAK INC. ANY REPRODUCTION IN PART OR AS A WHOLE WITHOUT THE WRITTEN PERMISSION OF BENDPAK INC. IS PROHIBITED.</small>		SIZE DWG. NO.
		<small>THE INFORMATION CONTAINED IN THIS DRAWING IS THE SOLE PROPERTY OF BENDPAK INC. ANY REPRODUCTION IN PART OR AS A WHOLE WITHOUT THE WRITTEN PERMISSION OF BENDPAK INC. IS PROHIBITED.</small>		<b>A</b> 5174055
		SCALE: 1:45		REV <b>A</b>
				SHEET 1 OF 2



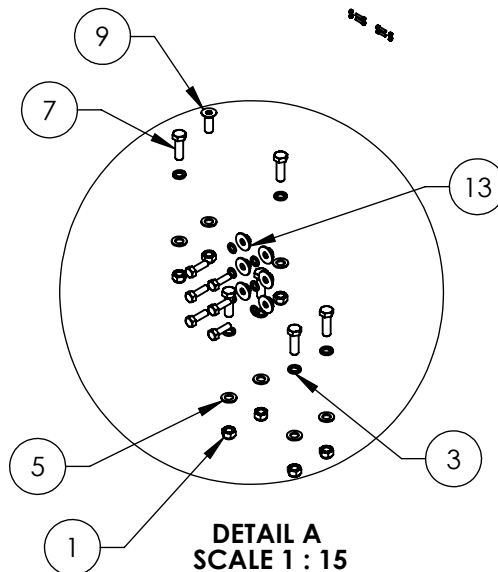
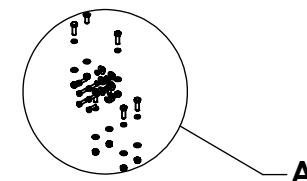
DETAIL C  
SCALE 1 : 10



DETAIL D  
SCALE 1 : 12



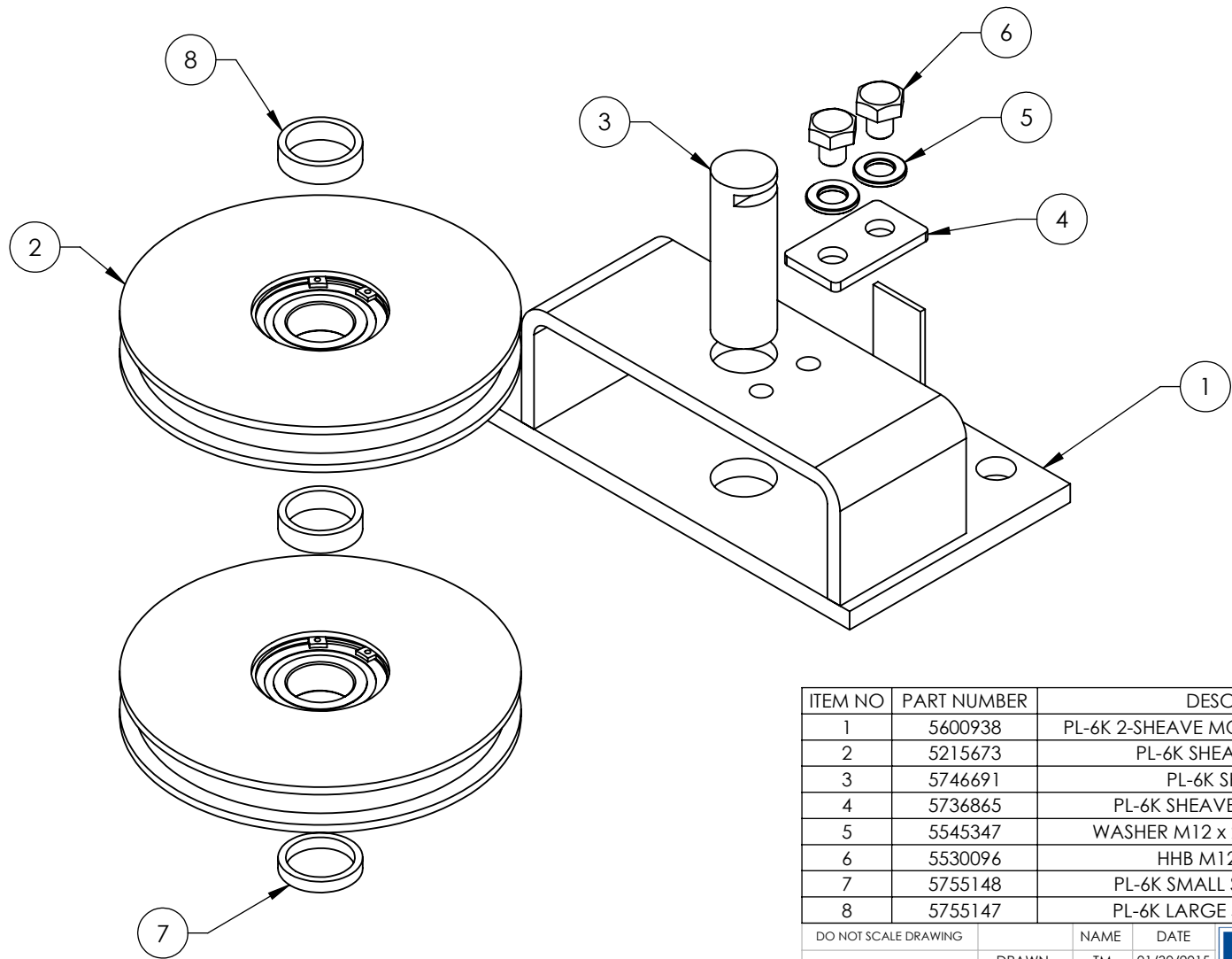
DETAIL B  
SCALE 1 : 8



DETAIL A  
SCALE 1 : 15

<b>BP BendPak.</b> 1645 LEMONWOOD DR. SANTA PAULA, CA 93060		
TITLE: PL-6KT PARTS BAG		
SIZE <b>A</b>	DWG. NO. 5174055	REV A
SCALE: 1:35		SHEET 2 OF 2

REVISION				
REV	DESCRIPTION	DATE	EDITED BY	ECO#
A	PRODUCTION RELEASE	01/30/2015	TM	00681
B	UPDATED BOM REVISION	07/31/2017	TS	00857
C	UPDATED BOM REVISION AND NEXT ASSEMBLY	04/23/2019	TM	01079



ITEM NO	PART NUMBER	DESCRIPTION	QTY	REV
1	5600938	PL-6K 2-SHEAVE MOUNT WELDMENT, R.H.	1	B
2	5215673	PL-6K SHEAVE ASSEMBLY	2	B
3	5746691	PL-6K SHEAVE PIN	1	A
4	5736865	PL-6K SHEAVE PIN BOLT PLATE	1	A
5	5545347	WASHER M12 x 24mm FLAT, CL 8.8	2	--
6	5530096	HHB M12 x 1.75 x 14	2	--
7	5755148	PL-6K SMALL SHEAVE SPACER	1	A
8	5755147	PL-6K LARGE SHEAVE SPACER	2	A

DO NOT SCALE DRAWING

DIMENSIONS ARE IN MM



NAME	DATE
DRAWN TM	01/30/2015
CHECKED CA	05/17/2019

THIRD ANGLE PROJECTION



PROPRIETARY AND CONFIDENTIAL  
THE INFORMATION CONTAINED IN THIS DRAWING IS THE SOLE PROPERTY OF BENDPAK INC. ANY REPRODUCTION IN PART OR AS A WHOLE WITHOUT THE WRITTEN PERMISSION OF BENDPAK INC. IS PROHIBITED.

**BendPak**  
1645 LEMONWOOD DR.  
SANTA PAULA, CA 93060

TITLE: PL-6K 2-SHEAVE MOUNT ASSEMBLY, R.H.

SIZE	DWG. NO.	REV
A	5215671	C

SCALE: 1:3

SHEET 1 OF 1

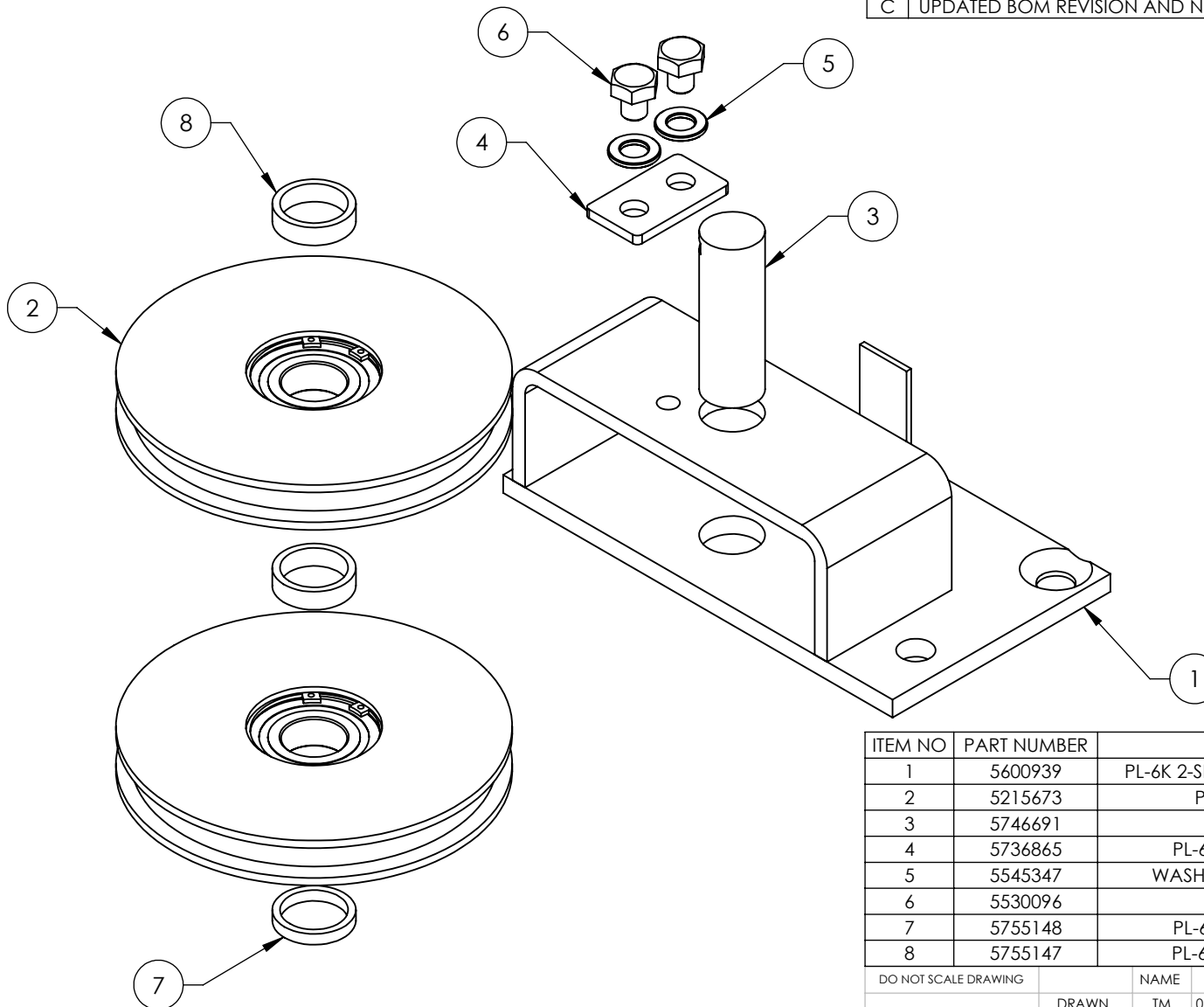
WHERE USED  
PL-6KT

**NOTE: UNLESS OTHERWISE SPECIFIED.**

- REFER TO MODEL FOR ADDITIONAL INFORMATION
- ASSEMBLE ITEMS AS SHOWN

NEXT ASSEMBLY  
5250333

REVISION				
REV	DESCRIPTION	DATE	EDITED BY	ECO#
A	PRODUCTION RELEASE	01/29/2015	TM	00681
B	UPDATED BOM REVISION	07/31/2017	TS	00857
C	UPDATED BOM REVISION AND NEXT ASSEMBLY	04/23/2019	TM	01079



ITEM NO	PART NUMBER	DESCRIPTION	QTY	REV
1	5600939	PL-6K 2-SHEAVE MOUNT WELDMENT, L.H.	1	B
2	5215673	PL-6K SHEAVE ASSEMBLY	2	B
3	5746691	PL-6K SHEAVE PIN	1	A
4	5736865	PL-6K SHEAVE PIN BOLT PLATE	1	A
5	5545347	WASHER M12 x 24mm FLAT, CL 8.8	2	--
6	5530096	HHB M12 x 1.75 x 14	2	--
7	5755148	PL-6K SMALL SHEAVE SPACER	1	A
8	5755147	PL-6K LARGE SHEAVE SPACER	2	A

DO NOT SCALE DRAWING

DIMENSIONS ARE IN MM



NAME	DATE
DRAWN TM	01/29/2015
CHECKED CA	05/17/2019

THIRD ANGLE PROJECTION

PROPRIETARY AND CONFIDENTIAL  
THE INFORMATION CONTAINED IN THIS DRAWING IS  
THE SOLE PROPERTY OF BENDPAK INC. ANY  
REPRODUCTION IN PART OR AS A WHOLE WITHOUT  
THE WRITTEN PERMISSION OF BENDPAK INC. IS  
PROHIBITED.

**BendPak**  
1645 LEMONWOOD DR.  
SANTA PAULA, CA 93060

TITLE: PL-6K 2-SHEAVE  
MOUNT ASSEMBLY, L.H.

SIZE DWG. NO. REV  
**A** 5215672 C

SCALE: 1:3

SHEET 1 OF 1

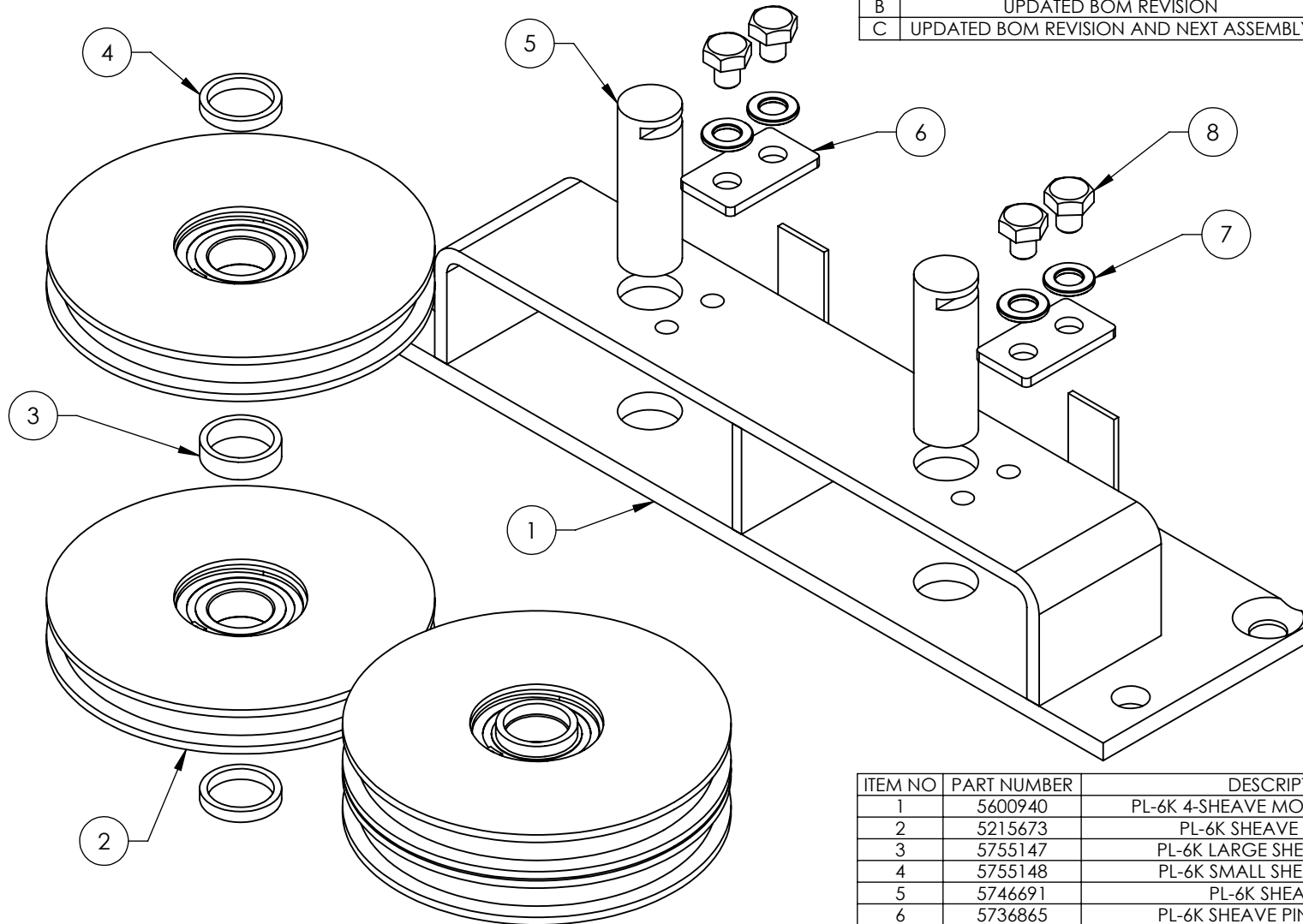
WHERE USED  
PL-6KT

**NOTE: UNLESS OTHERWISE SPECIFIED.**

- REFER TO MODEL FOR ADDITIONAL INFORMATION
- ASSEMBLE ITEMS AS SHOWN

NEXT ASSEMBLY  
5250333

REVISION				
REV	DESCRIPTION	DATE	EDITED BY	ECO#
A	PRODUCTION RELEASE	01/29/2015	TM	00681
B	UPDATED BOM REVISION	07/31/2017	TS	00857
C	UPDATED BOM REVISION AND NEXT ASSEMBLY	05/06/2019	CA	01079



ITEM NO	PART NUMBER	DESCRIPTION	QTY	REV
1	5600940	PL-6K 4-SHEAVE MOUNT WELDMENT	1	B
2	5215673	PL-6K SHEAVE ASSEMBLY	4	B
3	5755147	PL-6K LARGE SHEAVE SPACER	2	A
4	5755148	PL-6K SMALL SHEAVE SPACER	4	A
5	5746691	PL-6K SHEAVE PIN	2	A
6	5736865	PL-6K SHEAVE PIN BOLT PLATE	2	A
7	5545347	WASHER M12 x 24mm FLAT, CL 8.8	4	-
8	5530096	HHB M12 x 1.75 x 14	4	-

WHERE USED  
PL-6KT

**NOTE: UNLESS OTHERWISE SPECIFIED.**

1. REFER TO MODEL FOR ADDITIONAL INFORMATION
2. ASSEMBLE ITEMS AS SHOWN

NEXT ASSEMBLY  
5250333

DO NOT SCALE DRAWING

DIMENSIONS ARE IN MM



NAME	DATE
DRAWN TM	01/29/2015
CHECKED CA	05/17/2019

THIRD ANGLE PROJECTION

PROPRIETARY AND CONFIDENTIAL  
THE INFORMATION CONTAINED IN THIS DRAWING IS THE SOLE PROPERTY OF BENDPAK INC. ANY REPRODUCTION IN PART OR AS A WHOLE WITHOUT THE WRITTEN PERMISSION OF BENDPAK INC. IS PROHIBITED.

**BendPak**  
1645 LEMONWOOD DR.  
SANTA PAULA, CA 93060

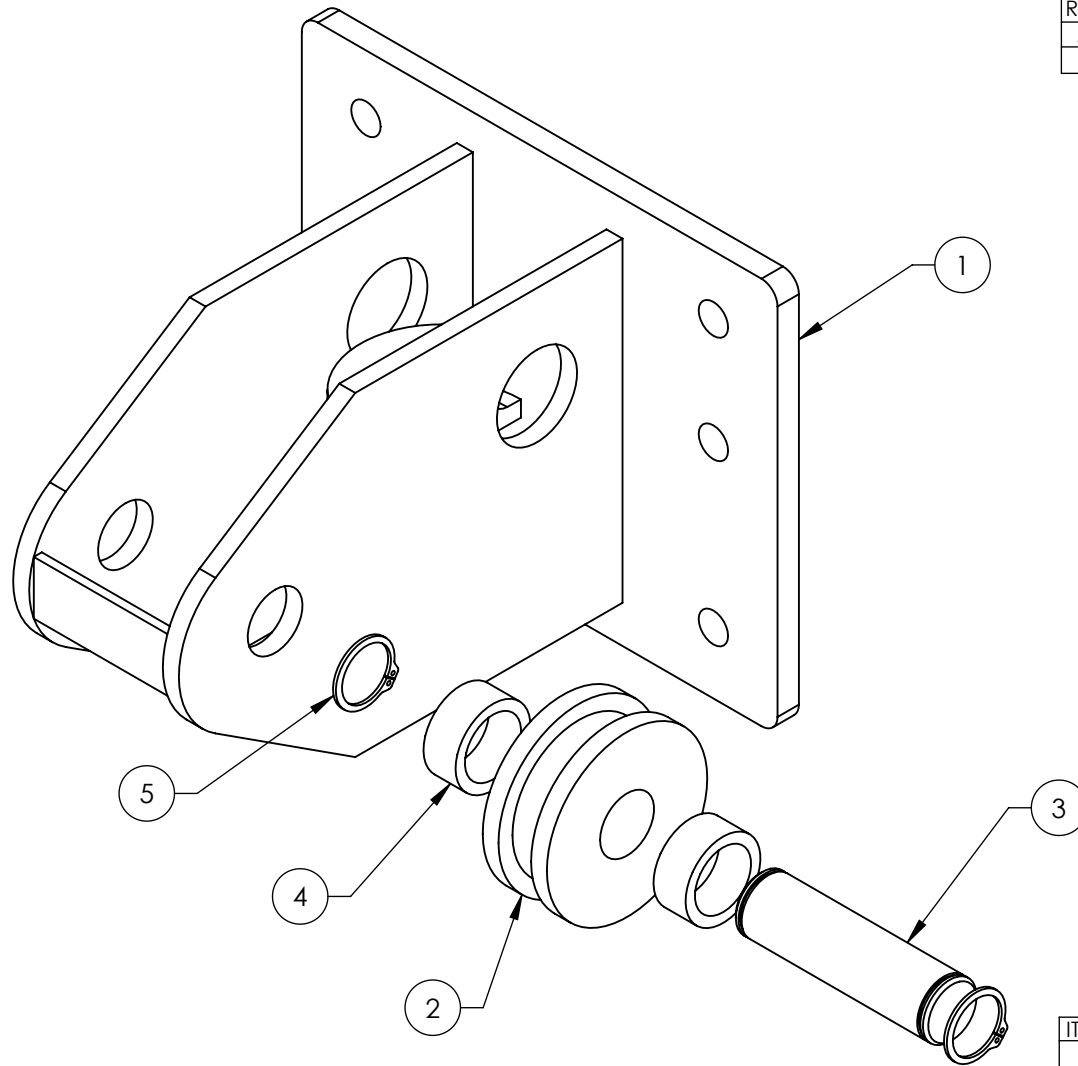
TITLE: PL-6K 4-SHEAVE  
MOUNT ASSEMBLY

SIZE DWG. NO.	REV
A 5215674	C

SCALE: 1:3



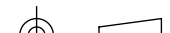
SHEET 1 OF 1





REVISION				
REV	DESCRIPTION	DATE	EDITED BY	ECO#
A	PRODUCTION RELEASE	02/04/2015	TM	00681
B	UPDATED BOM REVISION	05/18/2018	TM	00948

ITEM NO	PART NUMBER	DESCRIPTION	QTY	REV
1	5600949	PL-6K SERIES RAMP SHEAVE MOUNT WELDMENT R.H.	1	B
2	5575020	PL-6K SERIES RAMP SHEAVE	1	A
3	5746684	PL-6K SERIES RAMP SHEAVE PIN	1	A
4	5755149	PL-6K SERIES RAMP SHEAVE SPACER	2	A
5	5540022	R RING OD Ø20 TRUARC N5100-78	2	-

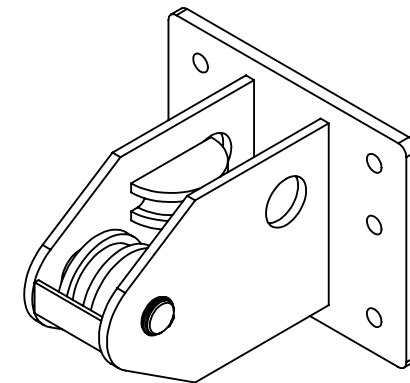
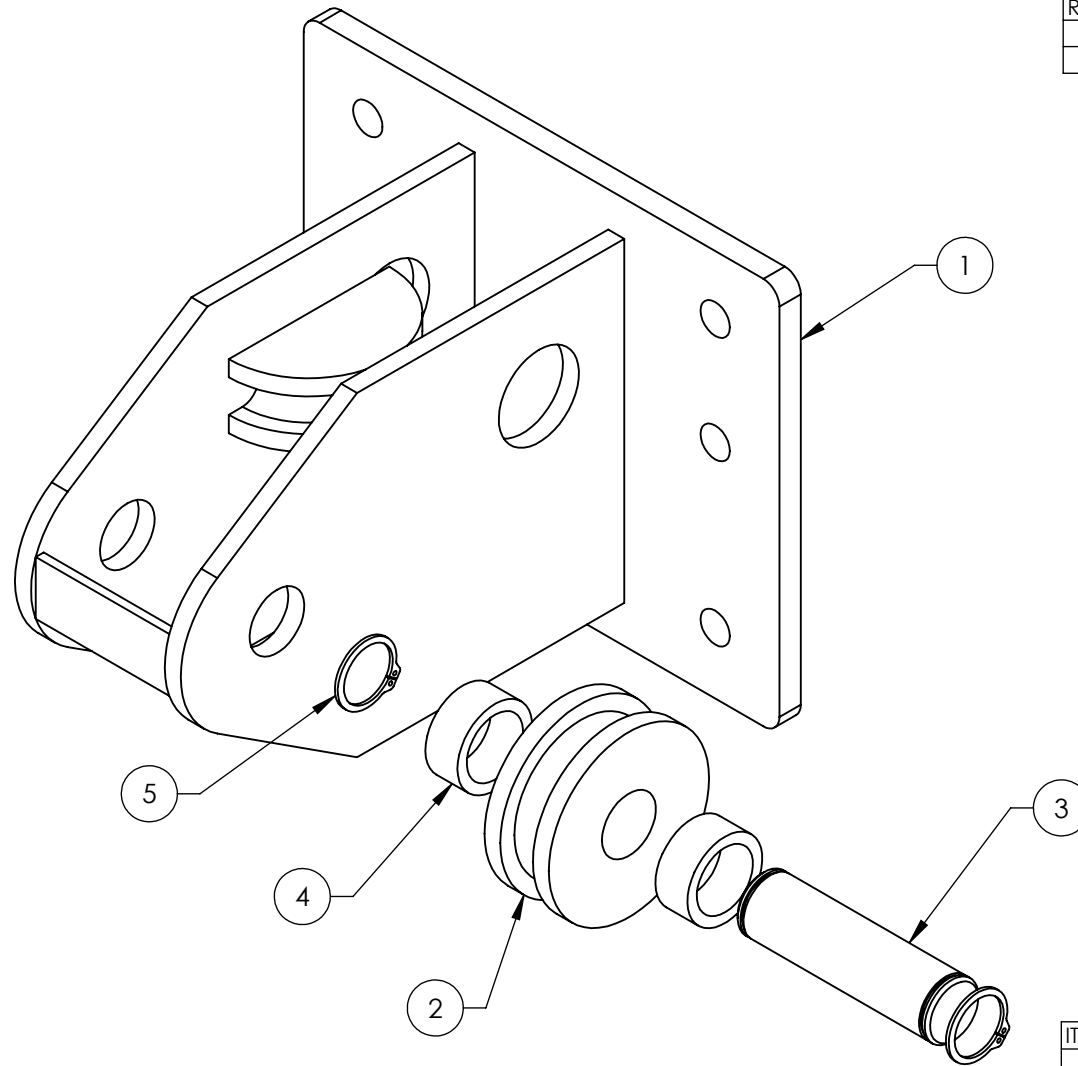
DO NOT SCALE DRAWING		NAME		DATE		 <b>BendPak.</b>	
DIMENSIONS ARE IN MM		DRAWN		TM		02/04/2015	
		CHECKED		CA		05/21/2018	
		THIRD ANGLE PROJECTION		TITLE:		1645 LEMONWOOD DR. SANTA PAULA, CA 93060	
				PL-6K SERIES RAMP SHEAVE MOUNT ASSEMBLY R.H.			
		<p>PROPRIETARY AND CONFIDENTIAL</p> <p>THE INFORMATION CONTAINED IN THIS DRAWING IS THE SOLE PROPERTY OF <b>BENDPAK INC.</b> ANY REPRODUCTION IN PART OR AS A WHOLE WITHOUT THE WRITTEN PERMISSION OF <b>BENDPAK INC.</b> IS PROHIBITED.</p>		SIZE	DWG. NO.	REV	
				<b>A</b>	5215679	B	
SCALE: 1:2						SHEET 1 OF 1	

**NOTE: UNLESS OTHERWISE SPECIFIED.**

1. ASSEMBLE ITEMS AS SHOWN

NEXT ASSEMBLY
5215677
5215678

REVISION				
REV	DESCRIPTION	DATE	EDITED BY	ECO#
A	PRODUCTION RELEASE	02/04/2015	TM	00681
B	UPDATED BOM REVISION	05/18/2018	TM	00948



ISOMETRIC VIEW  
FOR REFERENCE ONLY  
DO NOT SCALE

WHERE USED
PL-6KDT
PL-6KDTX-21
PL-6KDW
PL-6KT

**NOTE: UNLESS OTHERWISE SPECIFIED.**

1. REFER TO MODEL FOR ADDITIONAL INFORMATION
2. ASSEMBLE ITEMS AS SHOWN

ITEM NO	PART NUMBER	DESCRIPTION	QTY	REV
1	5600950	PL-6K RAMP SHEAVE MOUNT WELDMENT, L.H.	1	B
2	5575020	PL-6K RAMP SHEAVE	1	A
3	5746684	PL-6K RAMP SHEAVE PIN	1	A
4	5755149	PL-6K RAMP SHEAVE SPACER	2	A
5	5540022	R RING OD Ø20 TRUARC N5100-78	2	-

DO NOT SCALE DRAWING

DIMENSIONS ARE IN MM



NAME	DATE
DRAWN TM	02/04/2015
CHECKED CA	05/30/2018

THIRD ANGLE PROJECTION



PROPRIETARY AND CONFIDENTIAL  
THE INFORMATION CONTAINED IN THIS DRAWING IS  
THE SOLE PROPERTY OF BENDPAK INC. ANY  
REPRODUCTION IN PART OR AS A WHOLE WITHOUT  
THE WRITTEN PERMISSION OF BENDPAK INC. IS  
PROHIBITED.

**BP BendPak**  
1645 LEMONWOOD DR.  
SANTA PAULA, CA 93060

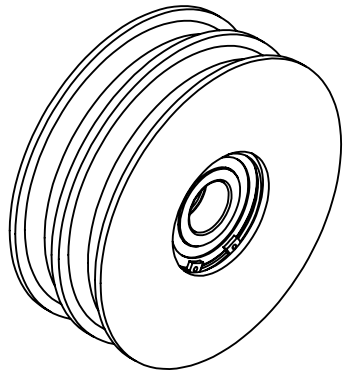
TITLE: PL-6K RAMP SHEAVE  
MOUNT ASSEMBLY, L.H.

SIZE DWG. NO. REV  
**A** 5215680 B

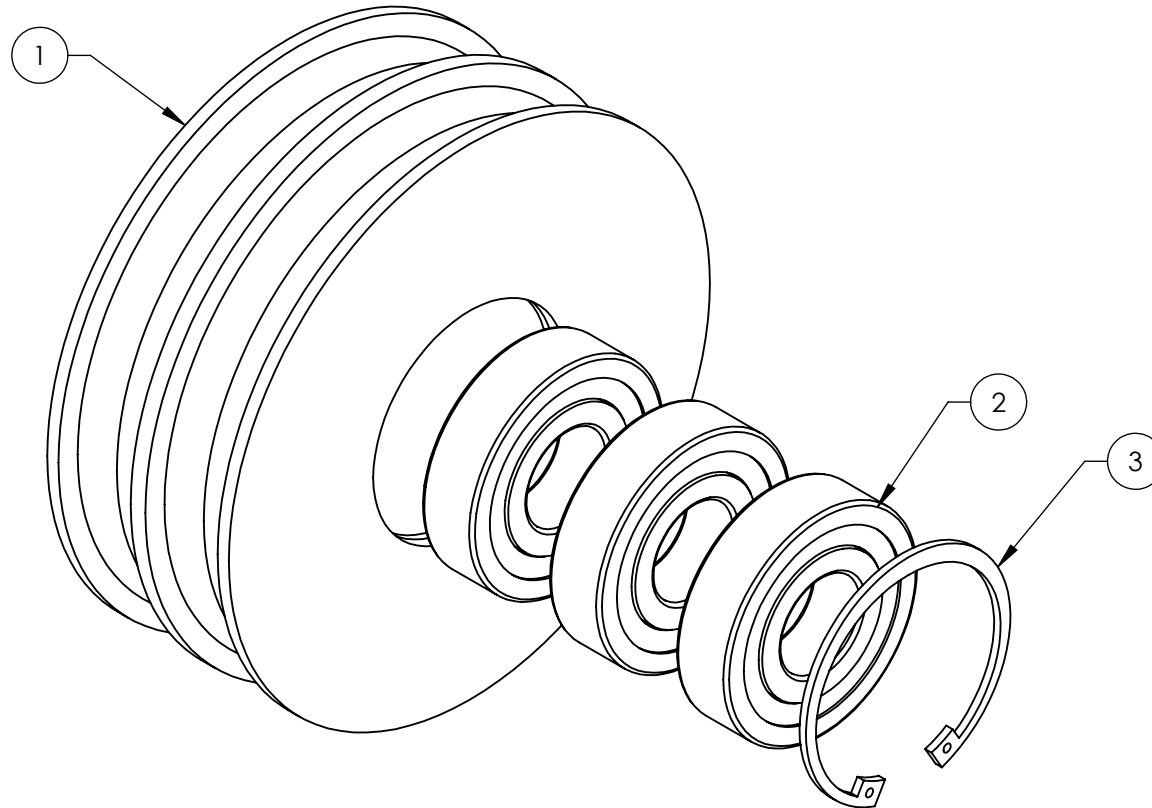
SCALE: 1:2

SHEET 1 OF 1

NEXT ASSEMBLY
5215677
5215678



ISOMETRIC VIEW  
FOR REFERENCE ONLY  
DO NOT SCALE



WHERE USED
PL-6KDT
PL-6KDTX-21
PL-6KDW
PL-6KT

**NOTE: UNLESS OTHERWISE SPECIFIED.**

1. REFER TO MODEL FOR ADDITIONAL INFORMATION
2. LIGHT PRESS FIT BEARING
3. ASSEMBLE ITEMS AS SHOWN

NEXT ASSEMBLY  
5216011

REVISION				
REV	DESCRIPTION	DATE	EDITED BY	ECO#
A	PRODUCTION RELEASE, DERIVED FROM 5215675	08/29/2017	TS	00857

ITEM NO	PART NUMBER	DESCRIPTION	QTY	REV
1	5575028	PL-6K QUAD SHEAVE	1	A
2	5565041	NJ 306-E CYLINDRICAL ROLLER BEARING	3	A
3	5540023	Q RING ID Ø72 TRUARC N5000-281	1	-

DO NOT SCALE DRAWING

DIMENSIONS ARE IN MM



NAME	DATE
DRAWN TS	08/29/2017
CHECKED AW	10/30/2017

THIRD ANGLE PROJECTION



PROPRIETARY AND CONFIDENTIAL  
THE INFORMATION CONTAINED IN THIS DRAWING IS  
THE SOLE PROPERTY OF BENDPAK INC. ANY  
REPRODUCTION IN PART OR AS A WHOLE WITHOUT  
THE WRITTEN PERMISSION OF BENDPAK INC. IS  
PROHIBITED.



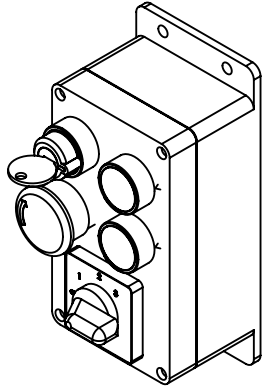
1645 LEMONWOOD DR.  
SANTA PAULA, CA 93060

TITLE: PL-6K QUAD SHEAVE  
ASSEMBLY

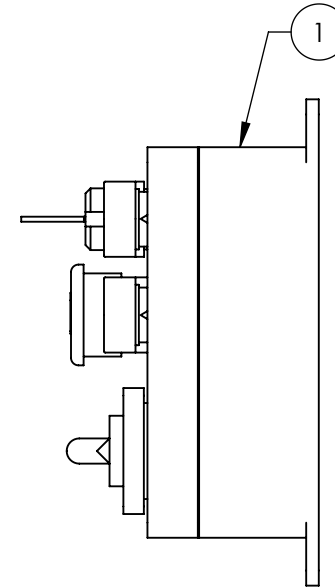
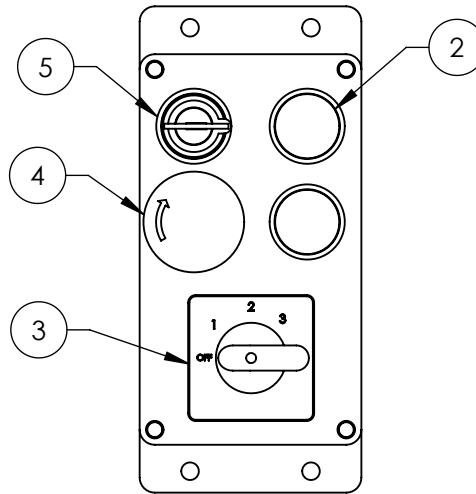
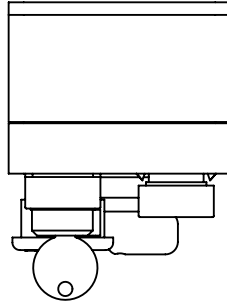
SIZE	DWG. NO.	REV
A	5215696	A

SCALE: 1:2

SHEET 1 OF 1



ISOMETRIC VIEW  
FOR REFERENCE ONLY  
DO NOT SCALE



REVISION				
REV	DESCRIPTION	DATE	EDITED BY	ECO#
A	PRODUCTION RELEASE	01/19/2017	TM	00802
B	WAS SQUARE HOLE NOW ROUND HOLES, UPDATED BOM REVISION	05/18/2018	TM	00948
C	UPDATED WIRING, pg 3	10/19/2021	OR	01357
C-001	UPDATED WIRING, pg 3	04/19/2022	CA	01410

WHERE USED  
PL-6KT

**NOTE: UNLESS OTHERWISE SPECIFIED.**

1. REFER TO MODEL FOR ADDITIONAL INFORMATION
2. COIL EXCESS WIRE INSIDE BOX BEFORE SHIPPING
3. SEE SHIPPING INSTRUCTIONS FOR FINAL PACKAGING
4. ASSEMBLE ITEMS AS SHOWN

NEXT ASSEMBLY  
5250333

ITEM NO	PART NUMBER	DESCRIPTION	QTY	REV
1	5520028	PL-6K JUNCTION BOX	1	B
2	5520404	PUSH BUTTON 22mm METAL, BLACK 1 N.O.	2	-
3	5520027	CAM CHANGEOVER SWITCH 6 TERMINAL, 660V, 20A	1	-
4	5520401	PUSH BUTTON, 22mm, EMERGENCY	1	-
5	5520403	SELECTOR SWITCH KEY OPERATED 2 POSITION	1	-

DO NOT SCALE DRAWING

NAME	DATE
DRAWN TM	01/19/2017
CHECKED OR	04/20/2022

**BendPak**  
1645 LEMONWOOD DR.  
SANTA PAULA, CA 93060

DIMENSIONS ARE IN MM



THIRD ANGLE PROJECTION

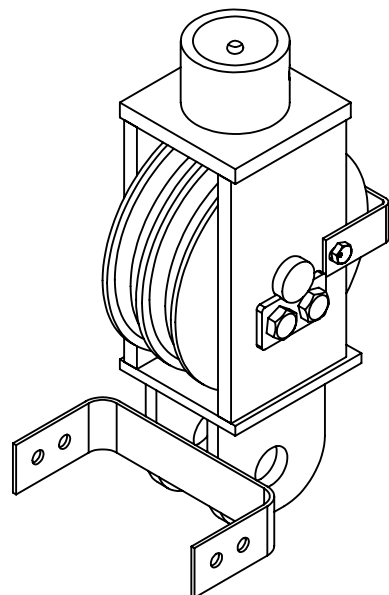
PROPRIETARY AND CONFIDENTIAL  
THE INFORMATION CONTAINED IN THIS DRAWING IS  
THE SOLE PROPERTY OF BENDPAK INC. ANY  
REPRODUCTION IN PART OR AS A WHOLE WITHOUT  
THE WRITTEN PERMISSION OF BENDPAK INC. IS  
PROHIBITED.

TITLE: PL-6KT CONTROL  
BOX ASSEMBLY

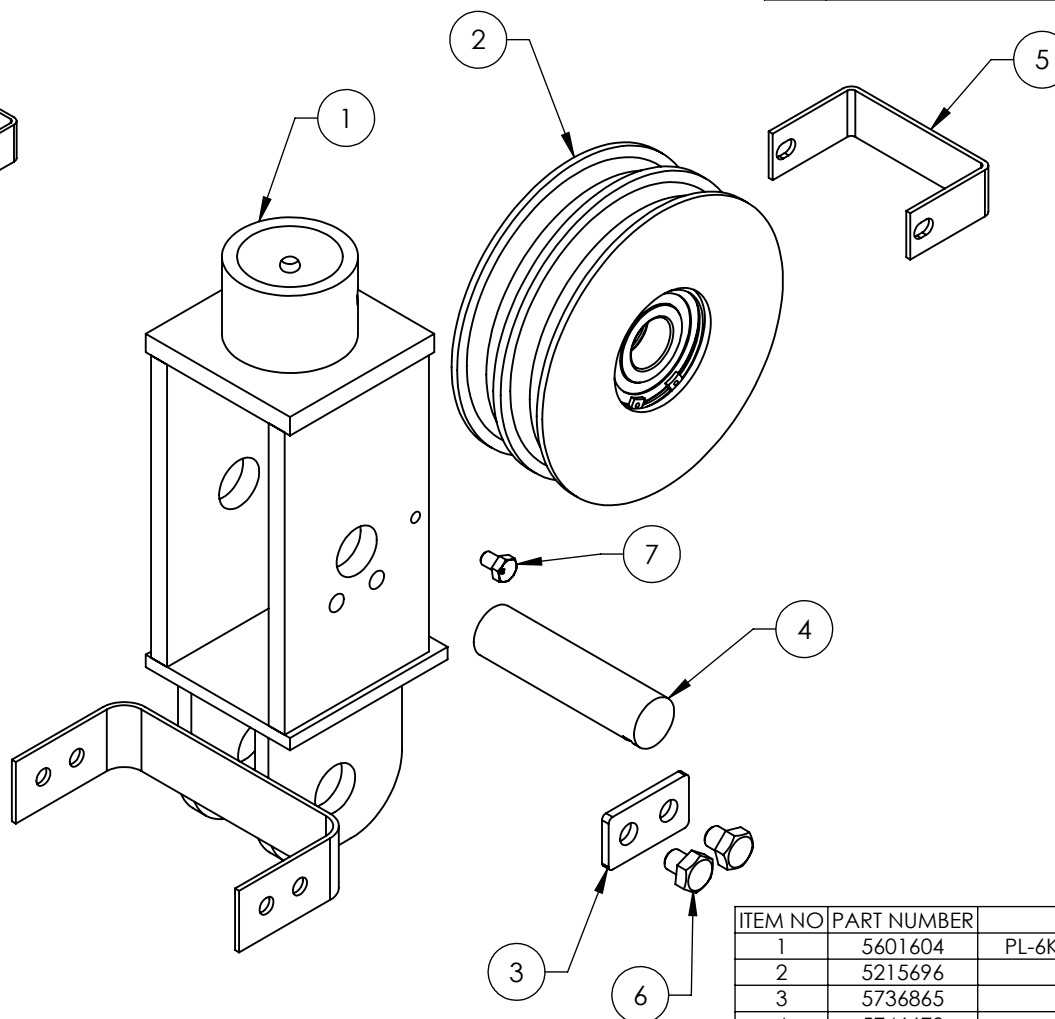
SIZE DWG. NO.	REV
A 5215710	C

SCALE: 1:3

SHEET 1 OF 3



ISOMETRIC VIEW  
FOR REFERENCE ONLY  
DO NOT SCALE



REVISION				
REV	DESCRIPTION	DATE	EDITED BY	ECO#
A	PRODUCTION RELEASE, DERIVED FROM 5215676	10/15/2020	CA	01218

ITEM NO	PART NUMBER	DESCRIPTION	QTY	REV
1	5601604	PL-6K CYLINDER SHEAVE MOUNT WELDMENT	1	A
2	5215696	PL-6K QUAD SHEAVE ASSEMBLY	1	A
3	5736865	PL-6K SHEAVE PIN BOLT PLATE	1	A
4	5746679	PL-6K QUAD SHEAVE PIN	1	A
5	5701174	PL-6K QUAD SHEAVE MOUNT BRACKET	1	A
6	5530096	HHB M12 x 1.75 x 14	2	--
7	5530025	HHB M8 x 1.25 x 12mm	2	--

WHERE USED
PL-6KT

**NOTE: UNLESS OTHERWISE SPECIFIED.**

1. REFER TO MODEL FOR ADDITIONAL INFORMATION
2. SEE SHIPPING INSTRUCTIONS FOR FINAL PACKAGING
3. ASSEMBLE ITEMS AS SHOWN

NEXT ASSEMBLY  
5250333

DO NOT SCALE DRAWING

DIMENSIONS ARE IN MM



NAME	DATE
DRAWN CA	10/15/2020
CHECKED OR	12/30/2020

THIRD ANGLE PROJECTION

PROPRIETARY AND CONFIDENTIAL  
THE INFORMATION CONTAINED IN THIS DRAWING IS  
THE SOLE PROPERTY OF BENDPAK INC. ANY  
REPRODUCTION IN PART OR AS A WHOLE WITHOUT  
THE WRITTEN PERMISSION OF BENDPAK INC. IS  
PROHIBITED.

**BendPak**  
1645 LEMONWOOD DR.  
SANTA PAULA, CA 93060

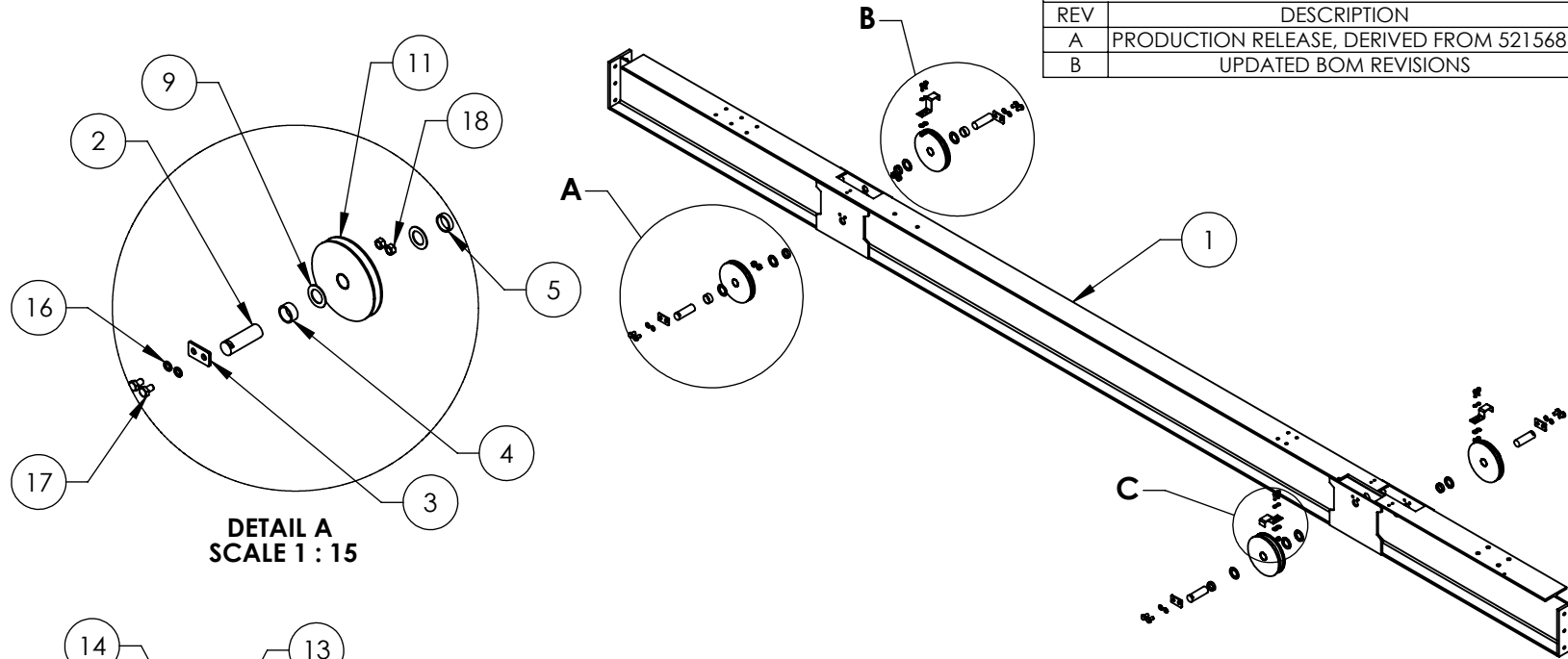
TITLE: PL-6K CYLINDER SHEAVE  
MOUNT ASSEMBLY, SLIDE

SIZE	DWG. NO.	REV
A	5216011	A

SCALE: 1:4

SHEET 1 OF 1

REVISION				
REV	DESCRIPTION	DATE	EDITED BY	ECO#
A	PRODUCTION RELEASE, DERIVED FROM 5215681	10/22/2020	CA	01218
B	UPDATED BOM REVISIONS	08/11/2021	TM	01324



DETAIL A  
SCALE 1 : 15

DETAIL B  
SCALE 1 : 15

DETAIL C  
SCALE 1 : 5

ITEM NO	PART NUMBER	DESCRIPTION	QTY	REV
1	5601607	PL-6K CENTER CROSSBEAM WELDMENT	1	A
2	5746685	PL-6K CROSSBEAM SHEAVE PIN	4	C
3	5736865	PL-6K SHEAVE PIN BOLT PLATE	4	A
4	5755150	PL-6K CROSSBEAM RAMP SHEAVE SPACER	3	A
5	5755151	PL-6K CROSSBEAM RAMP SHEAVE SPACER, SMALL	4	A
6	5746686	PL-6K CROSSBEAM SHEAVE WASHER, LARGE	2	A
7	5701186	PL-6K CROSSBEAM CABLE RETAINER	1	A
8	5701187	PL-6K CROSSBEAM CABLE RETAINER, SMALL	2	A
9	5746687	PL-6K CROSSBEAM SHEAVE WASHER	7	A
10	5215695	PL-6K DOUBLE SHEAVE ASSEMBLY	1	B
11	5215694	PL-6K SINGLE SHEAVE ASSEMBLY	3	A
12	5545341	WASHER M10 x Ø20 FLAT	6	--
13	5545202	WASHER M8 x Ø15 SL	6	--
14	5530010	HHB M8 x 1.25 x 25mm ZPL	6	--
15	5535001	NUT M8 x 1.25 NL	6	--
16	5545201	WASHER, M12 SPRING LOCK	8	--
17	5530164	HHB M12 x 1.75 x 20	8	--
18	5535012	NUT M12 x 1.75 NL	4	--

WHERE USED  
PL-6KT

**NOTE: UNLESS OTHERWISE SPECIFIED.**

1. REFER TO MODEL FOR ADDITIONAL INFORMATION
2. SEE SHIPPING INSTRUCTIONS FOR FINAL PACKAGING
3. ASSEMBLE ITEMS AS SHOWN

NEXT ASSEMBLY  
5245141

DO NOT SCALE DRAWING

DIMENSIONS ARE IN MM



NAME DATE  
DRAWN CA 10/22/2020  
CHECKED OR 8/18/2021

THIRD ANGLE PROJECTION

PROPRIETARY AND CONFIDENTIAL  
THE INFORMATION CONTAINED IN THIS DRAWING IS THE SOLE PROPERTY OF BENDPAK INC. ANY REPRODUCTION IN PART OR AS A WHOLE WITHOUT THE WRITTEN PERMISSION OF BENDPAK INC. IS PROHIBITED.

**BendPak**  
1645 LEMONWOOD DR.  
SANTA PAULA, CA 93060

TITLE: PL-6K CENTER CROSSBEAM ASSEMBLY

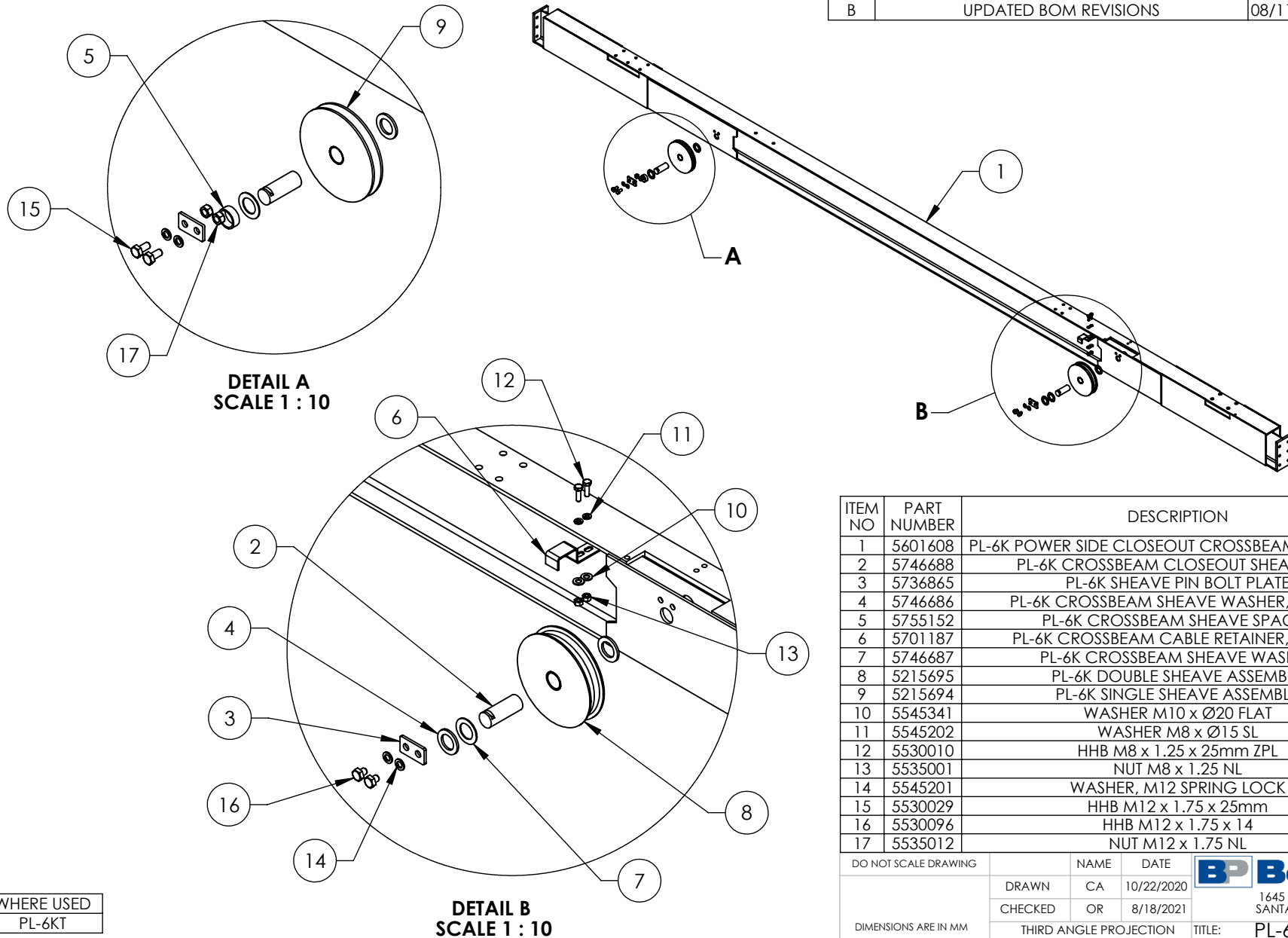
SIZE DWG. NO. REV  
A 5216012 B

SCALE: 1:30

SHEET 1 OF 1



REVISION				
REV	DESCRIPTION	DATE	EDITED BY	ECO#
A	PRODUCTION RELEASE, DERIVED FROM 5215682	10/22/2020	CA	01218
B	UPDATED BOM REVISIONS	08/11/2021	TM	01324



ITEM NO	PART NUMBER	DESCRIPTION	QTY	REV
1	5601608	PL-6K POWER SIDE CLOSEOUT CROSSBEAM WELDMENT	1	A
2	5746688	PL-6K CROSSBEAM CLOSEOUT SHEAVE PIN	2	C
3	5736865	PL-6K SHEAVE PIN BOLT PLATE	2	A
4	5746686	PL-6K CROSSBEAM SHEAVE WASHER, LARGE	3	A
5	5755152	PL-6K CROSSBEAM SHEAVE SPACER	1	A
6	5701187	PL-6K CROSSBEAM CABLE RETAINER, SMALL	1	A
7	5746687	PL-6K CROSSBEAM SHEAVE WASHER	2	A
8	5215695	PL-6K DOUBLE SHEAVE ASSEMBLY	1	B
9	5215694	PL-6K SINGLE SHEAVE ASSEMBLY	1	A
10	5545341	WASHER M10 x Ø20 FLAT	2	--
11	5545202	WASHER M8 x Ø15 SL	2	--
12	5530010	HHB M8 x 1.25 x 25mm ZPL	2	--
13	5535001	NUT M8 x 1.25 NL	2	--
14	5545201	WASHER, M12 SPRING LOCK	4	--
15	5530029	HHB M12 x 1.75 x 25mm	2	--
16	5530096	HHB M12 x 1.75 x 14	2	--
17	5535012	NUT M12 x 1.75 NL	2	--

DO NOT SCALE DRAWING

NAME	DATE
DRAWN CA	10/22/2020
CHECKED OR	8/18/2021

DIMENSIONS ARE IN MM



THIRD ANGLE PROJECTION

PROPRIETARY AND CONFIDENTIAL  
THE INFORMATION CONTAINED IN THIS DRAWING IS THE SOLE PROPERTY OF BENDPAK INC. ANY REPRODUCTION IN PART OR AS A WHOLE WITHOUT THE WRITTEN PERMISSION OF BENDPAK INC. IS PROHIBITED.

**BendPak**  
1645 LEMONWOOD DR.  
SANTA PAULA, CA 93060

TITLE: PL-6K POWER SIDE  
CLOSEOUT  
CROSSBEAM ASSEMBLY

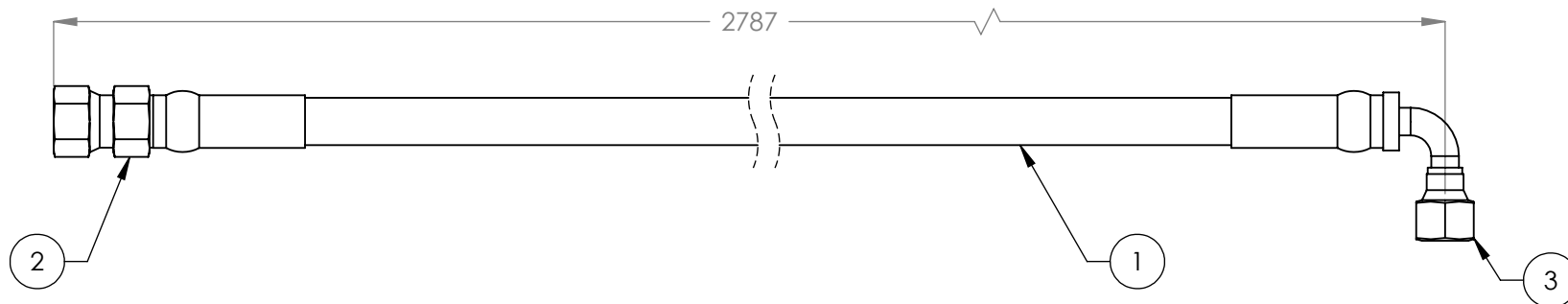
SIZE DWG. NO. REV  
**A** 5216013 **B**

SCALE: 1:30



SHEET 1 OF 1

NEXT ASSEMBLY  
5245141

REVISION				
REV	DESCRIPTION	DATE	EDITED BY	ECO#
A	PRODUCTION RELEASE, DERIVED FROM 5570156	06/20/2017	TM	00832
A-001	UPDATED NEXT ASSEMBLIES	12/14/2017	TM	00914
A-002	UPDATED NEXT ASSEMBLIES	05/08/2018	TM	00903



ITEM NO	PART NUMBER	DESCRIPTION	QTY	REV
1	5570129	Ø6.4 ID HYDRAULIC HOSE	2749mm*	-
2	5550325	FTG NPL Ø1/4 CRIMP x -04 JIC	1	-
3	5550345	FTG ELB Ø1/4 CRIMP x -04 JIC	1	-

DO NOT SCALE DRAWING		NAME		DATE		<div> <b>BendPak.</b></div> <div>1645 LEMONWOOD DR. SANTA PAULA, CA 93060</div>							
DIMENSIONS ARE IN MM TOLERANCES:  0. = ±1.5 0.0 = ±1.0 0.00 = ±0.25 0.000 = ±0.13  SURFACE FINISH 1.6 ISO Ra µm FOR MACHINED SURFACES UNLESS OTHERWISE SPECIFIED		DRAWN		TM				06/20/2017					
		CHECKED		CA				05/14/2018					
		THIRD ANGLE PROJECTION				TITLE:		HYDRAULIC HOSE ASSEMBLY Ø6.35 x 2787mm SB					
						SIZE				DWG. NO.		REV	
						A				5570102		A	
Y		<div>PROPRIETARY AND CONFIDENTIAL</div> <div>THE INFORMATION CONTAINED IN THIS DRAWING IS THE SOLE PROPERTY OF <b>BENDPAK INC.</b> ANY REPRODUCTION IN PART OR AS A WHOLE WITHOUT THE WRITTEN PERMISSION OF <b>BENDPAK INC.</b> IS PROHIBITED.</div>				SCALE: 1:2				SHEET 1 OF 1			

WHERE USED
PL-6KT

**NOTE: UNLESS OTHERWISE SPECIFIED.**

- FOR ITEM 1 SPECIFICATIONS REFER TO PART SPECIFICATION FORM
- (\*)ITEM 1 QTY FOR REFERENCE ONLY

## PART SPECIFICATION FORM

### ACP

<b>BENDPAK Number:</b>	5570129
<b>MRP Description:</b>	1/4" HYDRAULIC HOSE 31 CL-0400X
<b>Date:</b>	05/24/2018
<b>ECO :</b>	00950

#### 1. Engineering Specification

**Application:**

1/4" HYDRAULIC HOSE

**Detailed Description:**

ONE or TWO BRAID STEEL WIRE HYDRAULIC HOSE

SIZE: 1/4" / 6mm I.D. MIN  
 0.53" / 13.4mm O.D. MAX

SPECS: 5700PSI OR 393 BAR WORKING PRESSURE MINIMUM  
 17100PSI OR 1179 BAR MINIMUM BURST PRESSURE MINIMUM  
 3" / 80mm MIN BEND RADIUS

COLOR: BLACK

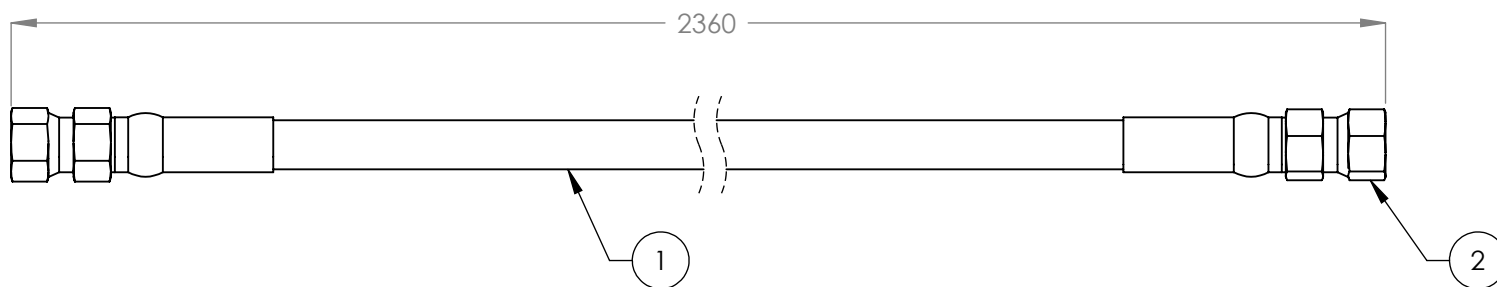
**ADDITIONAL CONTACT INFORMATION:**



#### 2. Vendor Information (Or for Reference)

Approved Vendor	Vendor Part #	Contact #	AUTHORIZED COMPONENT PROVIDER
1)	5570129		X
2)			
OR BENDPAK ENGINEERING APPROVED EQUIVALENT			

REVISION				
REV	DESCRIPTION	DATE	EDITED BY	ECO#
A	PRODUCTION RELEASE	12/14/2017	TM	00914






WHERE USED
PL-6KT

**NOTE: UNLESS OTHERWISE SPECIFIED.**

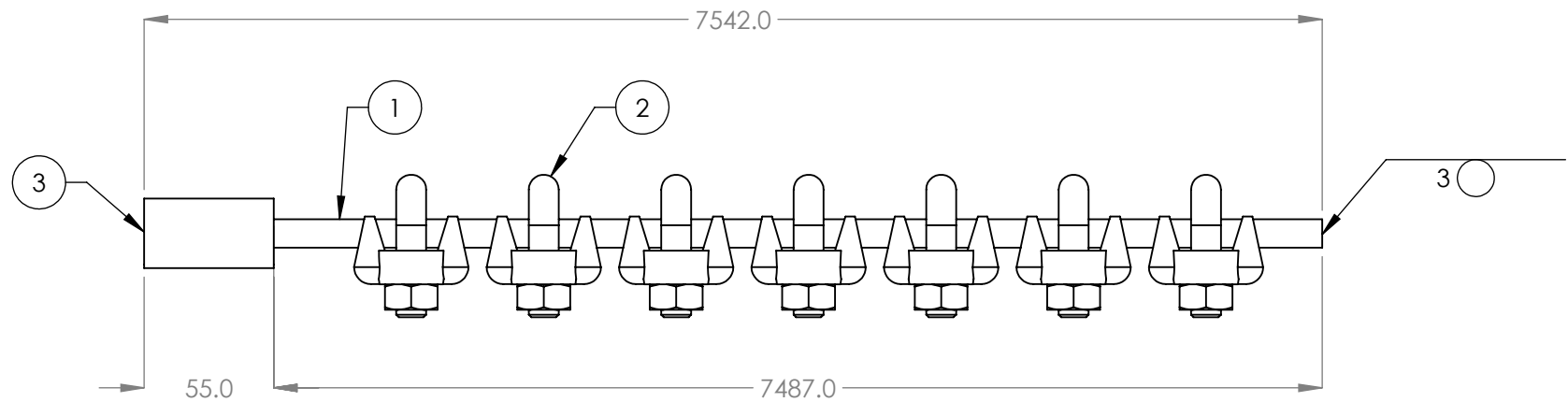
1. FOR ITEM 1 SPECIFICATIONS REFER TO PART SPECIFICATION FORM
2. (\*)ITEM 1 QTY FOR REFERENCE ONLY

ITEM NO.	PART NUMBER	DESCRIPTION	QTY.	REV
1	5570129	Ø6.4 ID HYDRAULIC HOSE	2294mm*	--
2	5550325	FTG NPL Ø1/4 CRIMP x -04 JIC	2	--

DO NOT SCALE DRAWING		NAME		DATE		 1645 LEMONWOOD DR. SANTA PAULA, CA 93060			
DIMENSIONS ARE IN MM TOLERANCES:  0. = ±1.5 0.0 = ±1.0 0.00 = ±0.25 0.000 = ±0.13  SURFACE FINISH 1.6 ISO Ra µm FOR MACHINED SURFACES UNLESS OTHERWISE SPECIFIED		DRAWN		TM				12/14/2017	
		CHECKED		AW		12/18/2017		TITLE: HYDRAULIC HOSE ASSEMBLY Ø6.35 x 2360mm DS	
THIRD ANGLE PROJECTION 				SIZE		DWG. NO.			
								A	
NEXT ASSEMBLY 5250333		PROPRIETARY AND CONFIDENTIAL THE INFORMATION CONTAINED IN THIS DRAWING IS THE SOLE PROPERTY OF BENDPAK INC. ANY REPRODUCTION IN PART OR AS A WHOLE WITHOUT THE WRITTEN PERMISSION OF BENDPAK INC. IS PROHIBITED.		SCALE: 1:2		SHEET 1 OF 1			

PROPRIETARY AND CONFIDENTIAL  
THE INFORMATION CONTAINED IN THIS DRAWING IS  
THE SOLE PROPERTY OF BENDPAK INC. ANY  
REPRODUCTION IN PART OR AS A WHOLE WITHOUT  
THE WRITTEN PERMISSION OF BENDPAK INC. IS  
PROHIBITED.

REVISION				
REV	DESCRIPTION	DATE	EDITED BY	ECO#
A	PRODUCTION RELEASE, DERIVED FROM 5595925 AND 5595926	10/19/2020	CA	01218



WHERE USED
PL-6KT

**NOTE: UNLESS OTHERWISE SPECIFIED.**

- FOR ITEM 1 SPECIFICATIONS REFER TO PART SPECIFICATION FORM
- ITEM 1 QTY FOR REFERENCE ONLY

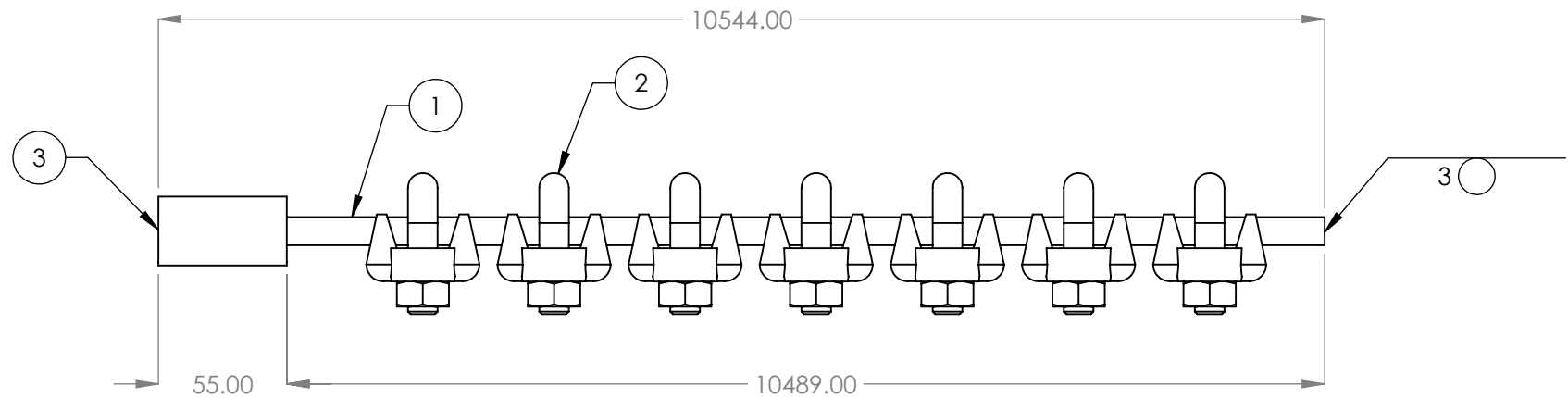
NEXT ASSEMBLY
5250333

ITEM NO	PART NUMBER	DESCRIPTION	QTY	REV
1	5595001	CABLE, LIFTING Ø12	7542mm*	--
2	5595924	WIRE ROPE CLIP Ø12mm	7	--
3	5746019	Ø12 CABLE END CONNECTOR	1	F

DO NOT SCALE DRAWING		NAME	DATE	 1645 LEMONWOOD DR. SANTA PAULA, CA 93060
		DRAWN	CA	
		CHECKED	OR	
DIMENSIONS ARE IN MM TOLERANCES: 0. = ±1.5 0.0 = ±0.5  SURFACE FINISH 1.6 ISO Ra µm FOR MACHINED SURFACES UNLESS OTHERWISE SPECIFIED		THIRD ANGLE PROJECTION 		TITLE: CABLE ASSEMBLY Ø12 x 7542mm
		SIZE DWG. NO. A 5595637		REV A
		SCALE: 1:3		SHEET 1 OF 1

PROPRIETARY AND CONFIDENTIAL  
THE INFORMATION CONTAINED IN THIS DRAWING IS  
THE SOLE PROPERTY OF BENDPAK INC. ANY  
REPRODUCTION IN PART OR AS A WHOLE WITHOUT  
THE WRITTEN PERMISSION OF BENDPAK INC. IS  
PROHIBITED.

REVISION				
REV	DESCRIPTION	DATE	EDITED BY	ECO#
A	PRODUCTION RELEASE, DERIVED FROM 5595925 AND 5595926	10/19/2020	CA	01218





WHERE USED
PL-6KT

**NOTE: UNLESS OTHERWISE SPECIFIED.**

- FOR ITEM 1 SPECIFICATIONS REFER TO PART SPECIFICATION FORM
- ITEM 1 QTY FOR REFERENCE ONLY

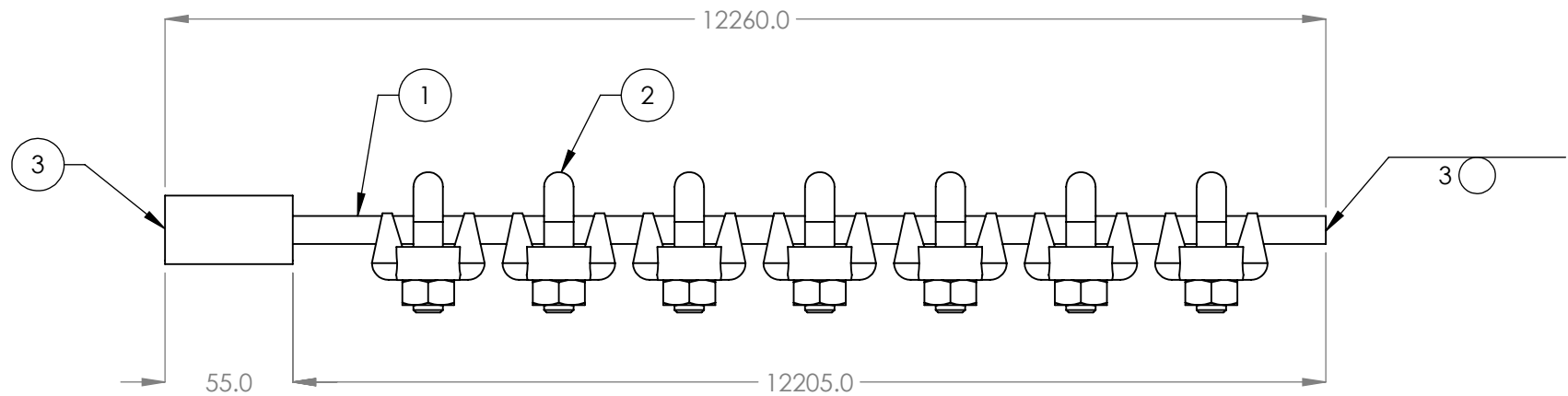
NEXT ASSEMBLY
5250333

ITEM NO	PART NUMBER	DESCRIPTION	QTY	REV
1	5595001	CABLE, LIFTING Ø12	10544mm*	--
2	5595924	WIRE ROPE CLIP Ø12mm	7	--
3	5746019	Ø12 CABLE END CONNECTOR	1	F

DO NOT SCALE DRAWING		NAME	DATE	 <b>BendPak.</b> 1645 LEMONWOOD DR. SANTA PAULA, CA 93060	
DIMENSIONS ARE IN MM TOLERANCES: 0. = ±1.5 0.0 = ±0.5  SURFACE FINISH 1.6 ISO Ra µm FOR MACHINED SURFACES UNLESS OTHERWISE SPECIFIED		DRAWN	CA	10/19/2020	TITLE: CABLE ASSEMBLY Ø12 x 10544mm
		CHECKED	OR	12/30/2020	
		THIRD ANGLE PROJECTION			
					
		PROPRIETARY AND CONFIDENTIAL THE INFORMATION CONTAINED IN THIS DRAWING IS THE SOLE PROPERTY OF <b>BENDPAK INC.</b> ANY REPRODUCTION IN PART OR AS A WHOLE WITHOUT THE WRITTEN PERMISSION OF <b>BENDPAK INC.</b> IS PROHIBITED.			
Y	SIZE DWG. NO.			REV	
	A 5595685			A	
SCALE: 1:3				SHEET 1 OF 1	



REVISION				
REV	DESCRIPTION	DATE	EDITED BY	ECO#
A	PRODUCTION RELEASE, DERIVED FROM 5595925 AND 5595926	10/19/2020	CA	01218





WHERE USED
PL-6KT

**NOTE: UNLESS OTHERWISE SPECIFIED.**

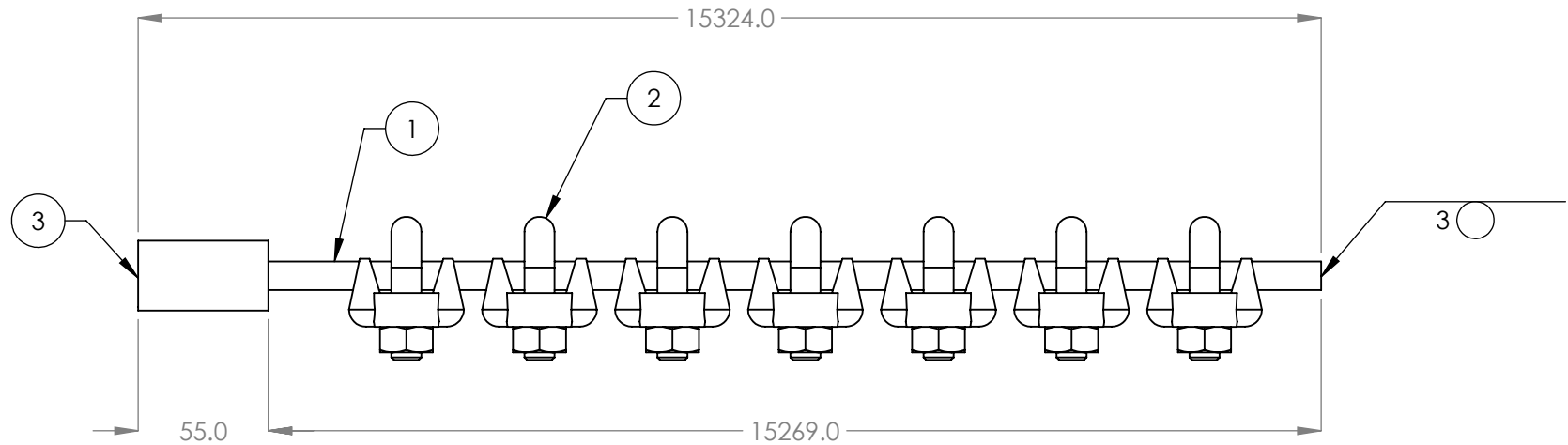
- FOR ITEM 1 SPECIFICATIONS REFER TO PART SPECIFICATION FORM
- ITEM 1 QTY FOR REFERENCE ONLY

NEXT ASSEMBLY
5250333

ITEM NO	PART NUMBER	DESCRIPTION	QTY	REV
1	5595001	CABLE, LIFTING Ø12	12260mm*	--
2	5595924	WIRE ROPE CLIP Ø12mm	7	--
3	5746019	Ø12 CABLE END CONNECTOR	1	F

DO NOT SCALE DRAWING		NAME	DATE	<div> <b>BendPak.</b></div> <div>1645 LEMONWOOD DR. SANTA PAULA, CA 93060</div>			
DIMENSIONS ARE IN MM TOLERANCES: <div>0. = ±1.5</div> <div>0.0 = ±0.5</div> SURFACE FINISH 1.6 ISO Ra µm FOR MACHINED SURFACES UNLESS OTHERWISE SPECIFIED		DRAWN	CA			10/19/2020	
		CHECKED	OR			12/22/2020	
Y		THIRD ANGLE PROJECTION			TITLE: CABLE ASSEMBLY Ø12 x 12260mm		
					SIZE DWG. NO. REV		
		PROPRIETARY AND CONFIDENTIAL THE INFORMATION CONTAINED IN THIS DRAWING IS THE SOLE PROPERTY OF <b>BENDPAK INC.</b> ANY REPRODUCTION IN PART OR AS A WHOLE WITHOUT THE WRITTEN PERMISSION OF <b>BENDPAK INC.</b> IS PROHIBITED.			A 5595686 A		
			SCALE: 1:3			SHEET 1 OF 1	

REVISION				
REV	DESCRIPTION	DATE	EDITED BY	ECO#
A	PRODUCTION RELEASE, DERIVED FROM 5595925 AND 5595926	10/19/2020	CA	01218





WHERE USED
PL-6KT

**NOTE: UNLESS OTHERWISE SPECIFIED.**

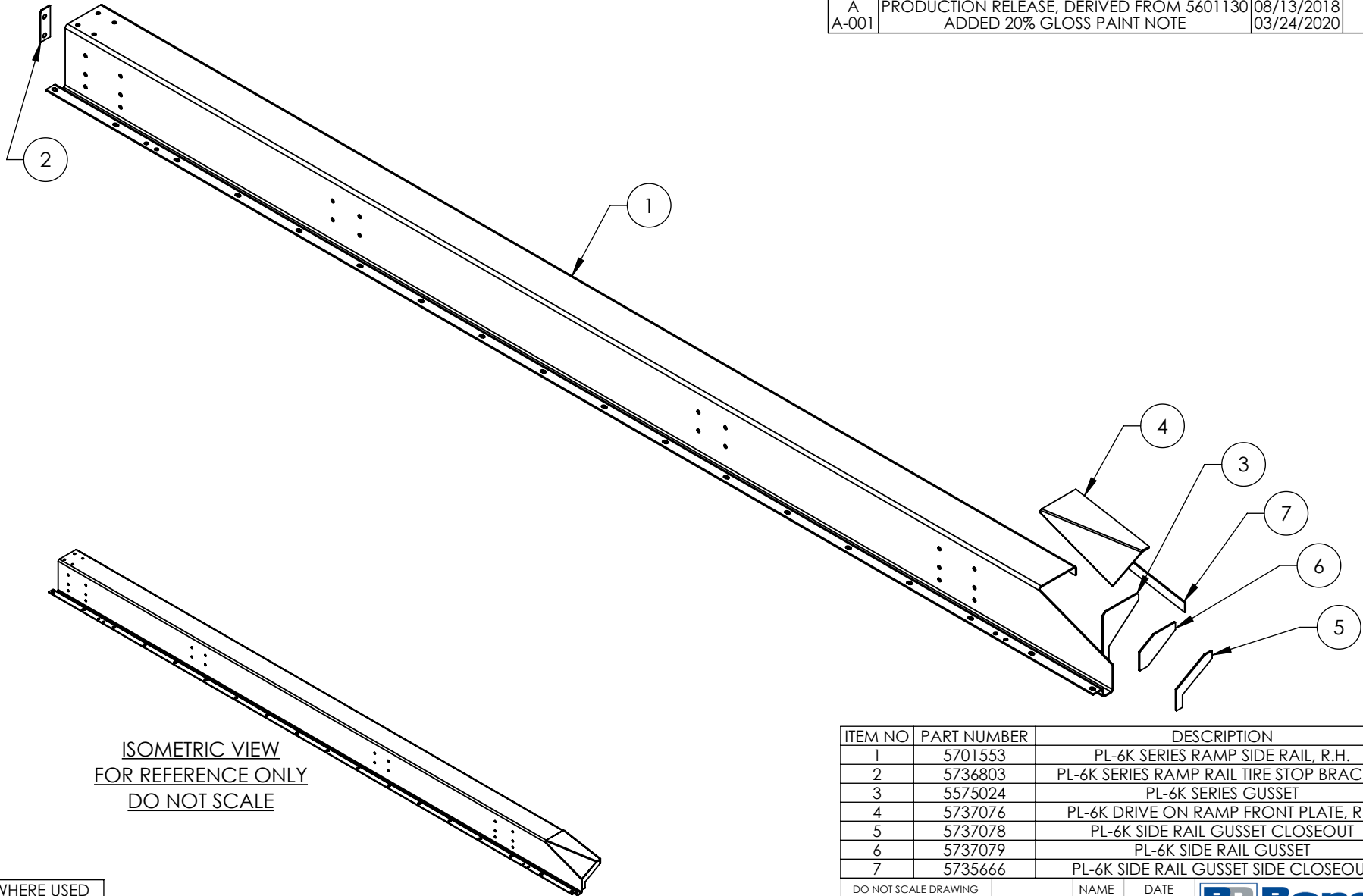
- FOR ITEM 1 SPECIFICATIONS REFER TO PART SPECIFICATION FORM
- ITEM 1 QTY FOR REFERENCE ONLY

NEXT ASSEMBLY
5250333

ITEM NO	PART NUMBER	DESCRIPTION	QTY	REV
1	5595001	CABLE, LIFTING Ø12	15324mm*	--
2	5595924	WIRE ROPE CLIP Ø12mm	7	--
3	5746019	Ø12 CABLE END CONNECTOR	1	F

DO NOT SCALE DRAWING		NAME	DATE	 <b>BendPak.</b>  1645 LEMONWOOD DR. SANTA PAULA, CA 93060	
		DRAWN	CA		10/19/2020
		CHECKED	OR		12/22/2020
DIMENSIONS ARE IN MM TOLERANCES: 0. = ±1.5 0.0 = ±0.5		THIRD ANGLE PROJECTION		TITLE: CABLE ASSEMBLY Ø12 x 15324mm	
SURFACE FINISH 1.6 ISO Ra µm FOR MACHINED SURFACES UNLESS OTHERWISE SPECIFIED					
Y	PROPRIETARY AND CONFIDENTIAL THE INFORMATION CONTAINED IN THIS DRAWING IS THE SOLE PROPERTY OF <b>BENDPAK INC.</b> ANY REPRODUCTION IN PART OR AS A WHOLE WITHOUT THE WRITTEN PERMISSION OF <b>BENDPAK INC.</b> IS PROHIBITED.		SIZE	DWG. NO.	REV
			A	5595687	A
			SCALE: 1:3		SHEET 1 OF 1

REVISION					
REV	DESCRIPTION		DATE	EDITED BY	ECO#
A	PRODUCTION RELEASE, DERIVED FROM 5601130		08/13/2018	TM	00985
A-001	ADDED 20% GLOSS PAINT NOTE		03/24/2020	CA	01156



WHERE USED  
PL-6K SERIES

**NOTE: UNLESS OTHERWISE SPECIFIED.**

1. REFER TO MODEL FOR ADDITIONAL INFORMATION
2. BREAK AND DEBURR ALL SHARP EDGES 0.3mm
3. REMOVE ALL WELD SPLATTER
4. DIMENSIONS SHOWN ARE AFTER PAINTING
5. PAINT BENDPAK GRAY (RAL-7024) 20% GLOSS

ITEM NO	PART NUMBER	DESCRIPTION	QTY	REV
1	5701553	PL-6K SERIES RAMP SIDE RAIL, R.H.	1	A
2	5736803	PL-6K SERIES RAMP RAIL TIRE STOP BRACKET	1	A
3	5575024	PL-6K SERIES GUSSET	1	A
4	5737076	PL-6K DRIVE ON RAMP FRONT PLATE, R.H	1	A
5	5737078	PL-6K SIDE RAIL GUSSET CLOSEOUT	1	A
6	5737079	PL-6K SIDE RAIL GUSSET	1	A
7	5735666	PL-6K SIDE RAIL GUSSET SIDE CLOSEOUT	1	A

DO NOT SCALE DRAWING

DIMENSIONS ARE IN MM  
TOLERANCES:

0. =  $\pm 1.5$   
0.0 =  $\pm 0.5$

SURFACE FINISH 1.6 ISO  $R_a$   $\mu$ m  
FOR MACHINED SURFACES  
UNLESS OTHERWISE SPECIFIED

NAME	DATE
DRAWN TM	08/10/2018
CHECKED OR	04/01/2020

THIRD ANGLE PROJECTION



PROPRIETARY AND CONFIDENTIAL  
THE INFORMATION CONTAINED IN THIS DRAWING IS  
THE SOLE PROPERTY OF BENDPAK INC. ANY  
REPRODUCTION IN PART OR AS A WHOLE WITHOUT  
THE WRITTEN PERMISSION OF BENDPAK INC. IS  
PROHIBITED.

**BendPak.**

1645 LEMONWOOD DR.  
SANTA PAULA, CA 93060

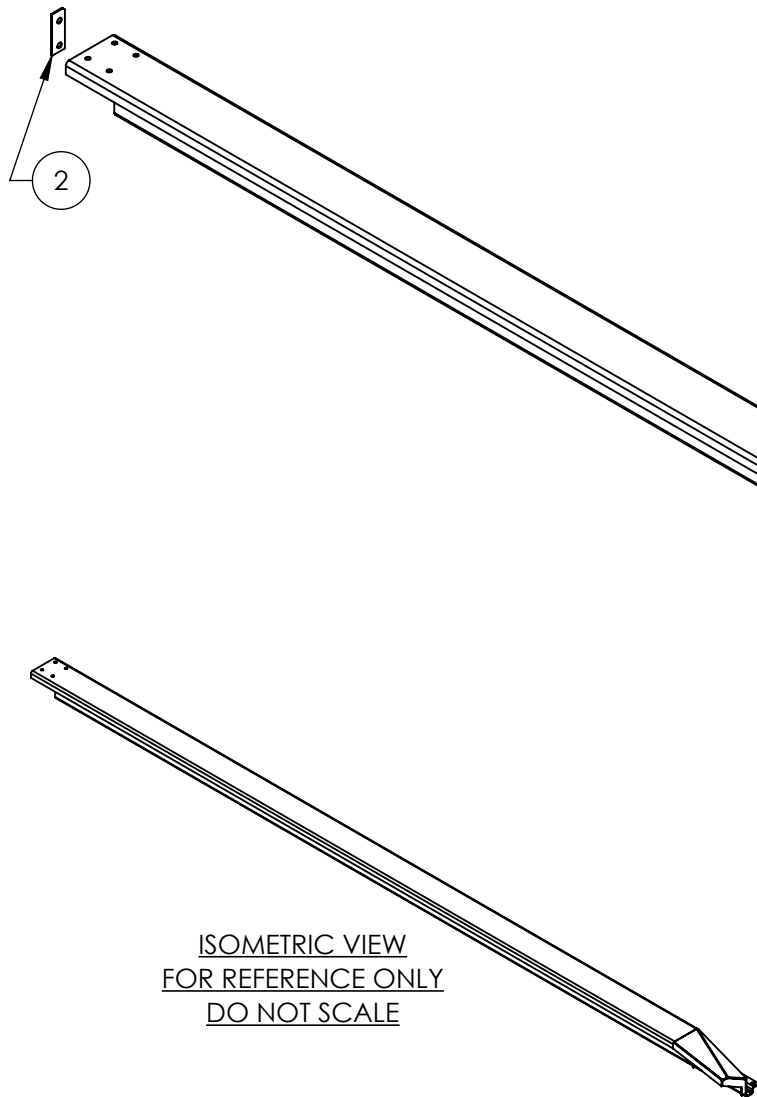
TITLE:  
PL-6K RAMP SIDE RAIL  
WELDMENT, R.H.

SIZE DWG. NO.	REV
A 5601276	A

SCALE: 1:15

SHEET 1 OF 2

NEXT ASSEMBLY  
5215678



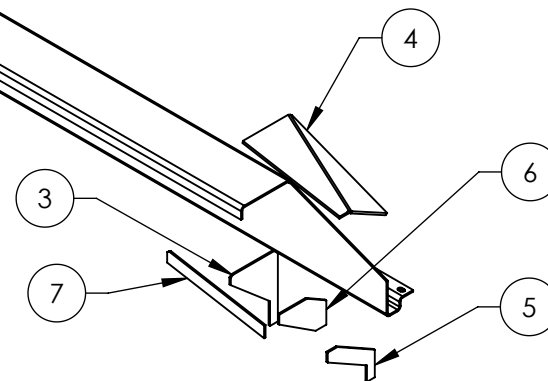
ISOMETRIC VIEW  
FOR REFERENCE ONLY  
DO NOT SCALE

WHERE USED  
PL-6K SERIES

**NOTE: UNLESS OTHERWISE SPECIFIED.**

1. REFER TO MODEL FOR ADDITIONAL INFORMATION
2. BREAK AND DEBURR ALL SHARP EDGES 0.3mm
3. REMOVE ALL WELD SPLATTER
4. DIMENSIONS SHOWN ARE AFTER PAINTING
5. PAINT BENDPAK GRAY (RAL-7024) 20% GLOSS

REVISION				
REV	DESCRIPTION	DATE	EDITED BY	ECO#
A	PRODUCTION RELEASE, DERIVED FROM 5601129	08/14/2018	TM	00985
A-001	ADDED 20% GLOSS PAINT NOTE	03/24/2020	CA	01156



ITEM NO	PART NUMBER	DESCRIPTION	QTY	REV
1	5701269	PL-6K SERIES RAMP SIDE RAIL, L.H.	1	A
2	5736803	PL-6K SERIES RAMP RAIL TIRE STOP BRACKET	1	A
3	5575024	PL-6K SERIES GUSSET	1	A
4	5737077	PL-6K DRIVE ON RAMP FRONT PLATE, L.H	1	A
5	5737078	PL-6K SIDE RAIL GUSSET CLOSEOUT	1	A
6	5737079	PL-6K SIDE RAIL GUSSET	1	A
7	5735666	PL-6K SIDE RAIL GUSSET SIDE CLOSEOUT	1	A

DO NOT SCALE DRAWING

DIMENSIONS ARE IN MM  
TOLERANCES:

0. = ±1.5  
0.0 = ±0.5

SURFACE FINISH 1.6 ISO Ra µm  
FOR MACHINED SURFACES  
UNLESS OTHERWISE SPECIFIED

NAME	DATE
DRAWN TM	08/14/2018
CHECKED OR	04/01/2020

THIRD ANGLE PROJECTION



PROPRIETARY AND CONFIDENTIAL  
THE INFORMATION CONTAINED IN THIS DRAWING IS  
THE SOLE PROPERTY OF BENDPAK INC. ANY  
REPRODUCTION IN PART OR AS A WHOLE WITHOUT  
THE WRITTEN PERMISSION OF BENDPAK INC. IS  
PROHIBITED.

**BendPak.**

1645 LEMONWOOD DR.  
SANTA PAULA, CA 93060

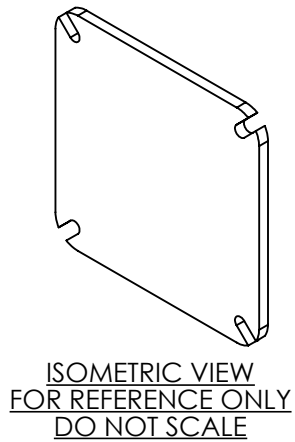
TITLE:  
PL-6K RAMP SIDE RAIL  
WELDMENT, L.H.

SIZE DWG. NO. REV  
**A** 5601277 A

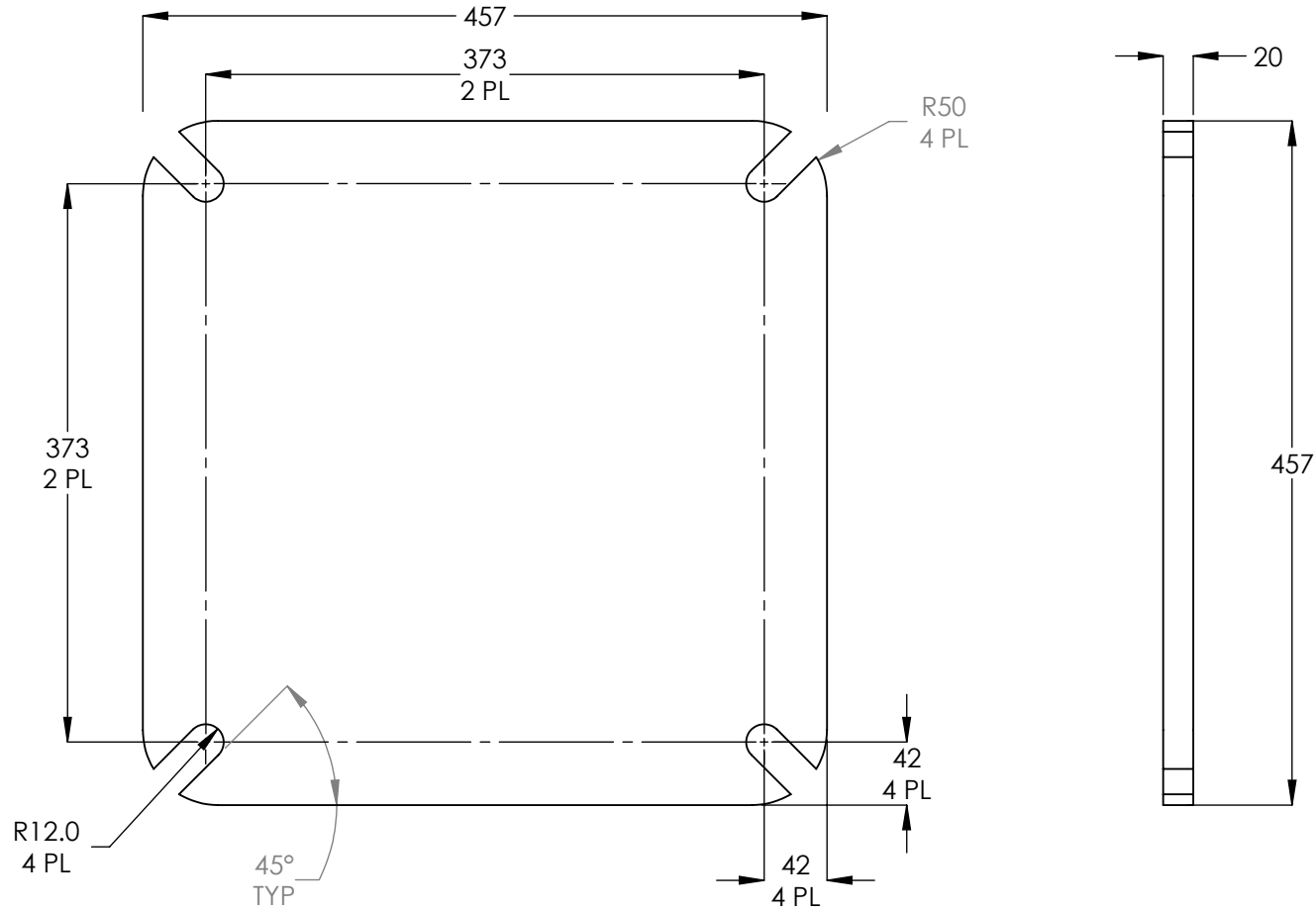
SCALE: 1:15

SHEET 1 OF 2

NEXT ASSEMBLY  
5215677





REVISION				
REV	DESCRIPTION	DATE	EDITED BY	ECO#
A	PRODUCTION RELEASE, DERIVED FROM 5736896	09/15/2017	TS	00857
B	WAS R11 NOW R12.0	06/01/2023	TM	01497



WHERE USED
PL-6KT

- NOTE: UNLESS OTHERWISE SPECIFIED.**
1. REFER TO MODEL FOR ADDITIONAL INFORMATION
  2. BREAK AND DEBURR ALL SHARP EDGES 0.3mm
  3. **MATERIAL:** HR ASTM A36 OR Q235 GB/T 700

NEXT ASSEMBLY
5600204
5600205
5600206

DO NOT SCALE DRAWING	NAME	DATE	 1645 LEMONWOOD DR. SANTA PAULA, CA 93060
	DRAWN	TS	
	CHECKED		
DIMENSIONS ARE IN MM TOLERANCES: 0. = ±1.5 0.0 = ±0.5	THIRD ANGLE PROJECTION		TITLE:
			PL-6K POST BASE PLATE
	SURFACE FINISH 1.6 ISO Ra µm FOR MACHINED SURFACES UNLESS OTHERWISE SPECIFIED		
THE INFORMATION CONTAINED IN THIS DRAWING IS THE SOLE PROPERTY OF BENDPAK INC. ANY REPRODUCTION IN PART OR AS A WHOLE WITHOUT THE WRITTEN PERMISSION OF BENDPAK INC. IS PROHIBITED.	SIZE	DWG. NO.	REV
	A	5737035	B
	SCALE: 1:5		SHEET 1 OF 1

## PART SPECIFICATION FORM (STANDARD)

<b>BENDPAK Number:</b>	5900056
<b>MRP Description:</b>	PL-6K INSTALLATION MANUAL
<b>Date:</b>	04/11/2022
<b>ECO :</b>	---

### 1. Engineering Specification

#### **Application:**

INSTALLATION MANUAL

#### **Detailed Description:**

#### **Print Settings**

Unless otherwise specified, use these settings for printing BendPak manuals:

<b>Size:</b>	A4 (210 to 297 mm), 8.5 by 11 inches (216 to 279 mm), or between
<b>Color:</b>	Black and White
<b>Binding:</b>	Saddle Stitched
<b>Paper:</b>	100 to 120 gsm (27 to 32 pound), uncoated



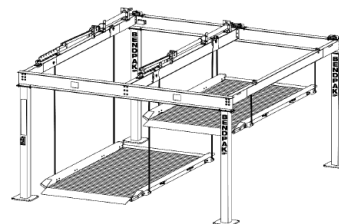
1645 Lemonwood Dr.  
Santa Paula, CA 93060 USA  
Toll Free: (800) 253-2863  
Tel: (805) 933-9970  
bendpak.com

#### **Double- and Triple-Wide Parking Lifts Installation and Operation Manual**

Manual P/N 5900056 — Manual Revision D1 — April 2022

#### **Models:**

- PL-6KDT
- PL-6KDTX-21
- PL-6KDW
- PL-6KT



Model PL-6KDT shown.

Designed and engineered by BendPak Inc. in Southern California, USA. Made in China.



**DANGER**

**IMPORTANT SAFETY INSTRUCTIONS, SAVE THESE INSTRUCTIONS!** Read the entire contents of this Manual **before** installing, operating, servicing, or maintaining this product. Failure to follow the instructions and safety precautions in this Manual can result in serious injury or death. Make sure all other operators also read this Manual. Keep the Manual near the product for future reference. **By proceeding with installation and operation, you agree that you fully understand the contents of this Manual and assume full responsibility for product use.**

### 2. Vendor Information (Or for Reference)

Approved Vendor	Vendor Part #	Contact #	Preferred Vendor
1)			
OR BENDPAK ENGINEERING APPROVED EQUIVALENT			