

# BB-2 Blue-Bullet Pipe Bender

**BendPak®**

SKU# 5115150

BB-2-DLX-601 Manual Pipe Bender with Deluxe 302 Tooling

**Questions? Contact BendPak's Sales Team**

sales@bendpak.com | 1-800-253-2363

Monday - Friday, 7AM to 4:30PM PST

## The BB-2 Pipe Bender Will Hold a Special Place in Your Shop

Meet the heavy-duty BendPak BB-2 "Blue-Bullet" exhaust pipe bender. It takes off like a shot and helps you reach your production target every time. Includes a die package and a dual-function end-finishing unit for precision OE expansions and flares.

### Features

- 2 separate end-finishing units at rear for all necessary flaring and expanding
- Knee control and depth-of-bend degree plate for manual bending operations
- **Deluxe 302 Tooling Package (Standard)**
- **Deluxe Metric Tooling Package (Optional)**
- Complete with quick release bending and finishing dies
- Includes clampless swager and internal expander
- Easy-to-use drop-in collar makes swaging operations quick and efficient
- Twist-lock tooling
- Integrated power-relief control valve
- Pass-through cylinder stem passes completely through the primary frame
- Rigid 6" x 6" x 3/8" welded-steel tube frame
- Commercial-grade hydraulic cylinders
- All cylinders feature chrome-molly shafts, conforming to ANSI 92.2 standards
- Quick-release bending dies for reduced set-up times
- Bending heads precision grounded to within .002"
- Enclosed controls keep your bending area clutter-free
- 2.5" oversized barrel shafts for maximum dependability and minimum maintenance
- Standard grease fittings allow for simple lubrication
- NEMA-rated on / off switch box incorporates overload relays that automatically disrupt power supply should an unforeseen over-current situation occur
- Pressure gauges let you know exactly what the system pressures are at all times
- Adjustable pressure valve located right up front
- Strong, 5 HP energy efficient motor delivers maximum performance
- Oil sight-gauges allow you to visually inspect oil levels

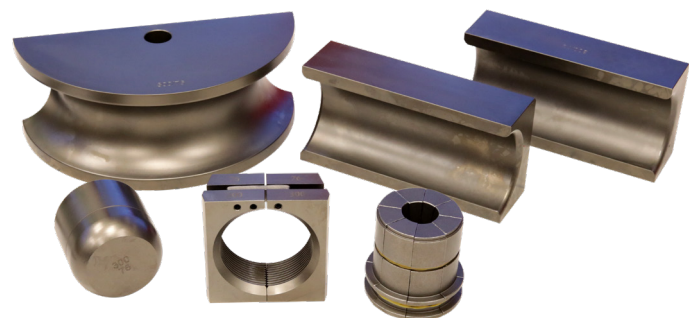


### Quick-change bending dies

Our twist-lock tooling and quick-change bending dies are so effective that they are copied across the entire industry. We choose to think of imitation as the best form of flattery, but you should make sure that you get your innovative equipment from the originator and not a knock-off.

### 180° bending capacity

Be sure to ask for our 180° dies if you're planning to bend more than 170°. You'll get perfect, deep bends on a 5" radius, without pipe sticking or hang-ups. That's because we use an exclusive relief cut design on our bending dies to help maintain the pipe's uniformity throughout the bend cycle and eliminate excessive crimping or deformation.



### Optional 300-1 Large 3" Die Package / 6-Piece

Give your pipe bender 3" pipe bending capability with this optional 6-piece die package.

**BendPak®**



30440 Agoura Road, Agoura Hills, CA 91301

## Specifications

Model	BB-2	1302BAS	1302BA
<b>Bending Controls</b>	Manual / Knee Lever	Semi-Auto / 3-Button	Automatic / Digital
<b>Expander Controls</b>	Manual / Knee Lever	Manual / Knee Lever	Manual / Knee Lever
<b>Frame Style</b>	Double-Ended Expander	Double-Ended Expander	Double-Ended Expander
<b>Max. Tube Capacity</b>	3" (76 mm) .095 wall	3" (76 mm) .095 wall	3" (76 mm) .095 wall
<b>Max. Bending Radius</b>	5" (127 mm)	5" (127 mm)	5" (127 mm)
<b>Min. Bending Radius</b>	3.3" (89 mm)	3.3" (89 mm)	3.3" (89 mm)
<b>Top Cylinder Force</b>	60,000 lbs. (27,216 kg)	60,000 lbs. (27,216 kg)	60,000 lbs. (27,216 kg)
<b>Dimensions</b>	42" x 62" x 31" (1,067 mm x 1,575 mm x 787)	41" x 64" x 26" (1,041 mm x 1,626 mm x 660)	41" x 64" x 26" (1,041 mm x 1,626 mm x 660)
<b>Shipping Weight</b>	1,264 lbs. (573 kg)	1,282 lbs. (582 kg)	1,418 lbs. (643 kg)
<b>Shipping Dimensions</b>	48" x 70" x 30" (1,219 mm x 1,778 mm x 762 mm)	48" x 70" x 30" (1,219 mm x 1,778 mm x 762 mm)	48" x 70" x 30" (1,219 mm x 1,778 mm x 762 mm)

## Choose Deluxe 302 Tooling (208-230V, 60 Hz 1-Phase)

Model	BB-2-DLX-601	1302BAS-DLX-601	1302BA-DLX-601
<b>SKU#</b>	5115150	5115180	5115121
<b>Motor</b>	5 HP / 208-230 VAC / 60 Hz / 1 Ph	5 HP / 208-230 VAC / 60 Hz / 1 Ph	5 HP / 208-230 VAC / 60 Hz / 1 Ph
<b>302 Tooling Pack</b>	1.5", 1.75", 1.625", 2", 2.25", 2.5"	1.5", 1.75", 1.625", 2", 2.25", 2.5"	1.5", 1.75", 1.625", 2", 2.25", 2.5"

## Choose Metric Tooling (208-230V, 60 Hz 1-Phase)

Model	BB-2-MET-601	1302BAS-MET-601	1302BA-MET-601
<b>SKU#</b>	5115122	5115124	5115127
<b>Motor</b>	5 HP / 208-230 VAC / 60 Hz / 1 Ph	5 HP / 208-230 VAC / 60 Hz / 1 Ph	5 HP / 208-230 VAC / 60 Hz / 1 Ph
<b>MET Tooling Pack</b>	38mm, 42mm, 45mm, 48mm, 51mm, 60mm	38mm, 42mm, 45mm, 48mm, 51mm, 60mm	38mm, 42mm, 45mm, 48mm, 51mm, 60mm

## Choose Metric Tooling (208-460V, 50 Hz 3-Phase)

Model	BB-2-MET-503	1302BAS-MET-503	1302BA-MET-503
<b>SKU#</b>	5115120	5115123	5115126
<b>Motor</b>	7.5 HP / 208-460 VAC / 50 Hz / 3 Ph	7.5 HP / 208-460 VAC / 50 Hz / 3 Ph	7.5 HP / 208-460 VAC / 50 Hz / 3 Ph
<b>MET Tooling Pack</b>	38mm, 42mm, 45mm, 48mm, 51mm, 60mm	38mm, 42mm, 45mm, 48mm, 51mm, 60mm	38mm, 42mm, 45mm, 48mm, 51mm, 60mm