



## Stainless Steel Sink

### ESS-2200

#### Product description

### Stainless Steel 2-Station Wall-Mounted Scrub Sink.

#### Compliances & Certifications



STATE OF CALIFORNIA  
Proposition 65



(ADA Compliant, BAA Compliant, BABAA Compliant, ICC A117.1, Proposition 65, TAS)

#### Code ESS-2200

##### Downloads

- [Optima ESS-2000\\_3000 Series Installation Instructions.pdf](#)
- [Optima ESS-2000\\_3000 Series \(Spanish\) Installation Instructions.pdf](#)
- [EHS-1000-ESS-2000-3000 Series Repair and Maintenance Guide.pdf](#)
- [Sink Brochure.pdf](#)
- [Additional Downloads](#)

##### Videos

- [Sloan - Company Overview](#)

---

## Details

- Material:
  - Stainless Steel
- Width: 60" (1524mm)

---

## Features

Double Station Stainless Steel Scrub Sink with Sensor Activated, 24 VAC, Chrome Plated Brass Hand Washing Faucets with the following features:

- Sink constructed from 16 gauge, Type 304 stainless steel with bead blast finish on sink bowl interior for superior wash-down characteristics
- 16 gauge "lift-out" style front access panel for easy maintenance access
- Sloan OPTIMA Faucet for hands-free operation
- Sink is shipped pre-plumbed for easy installation

---

## Recommended specifications

Sloan Stainless Series Scrub Sink model no. ESS 2X00. Product to be made of 16 gauge type 304 stainless steel with Sloan sensor faucets. Sink design to be ADA compliant.

---

## Suggested Faucets

### Warranty

[View Warranty Information](#)

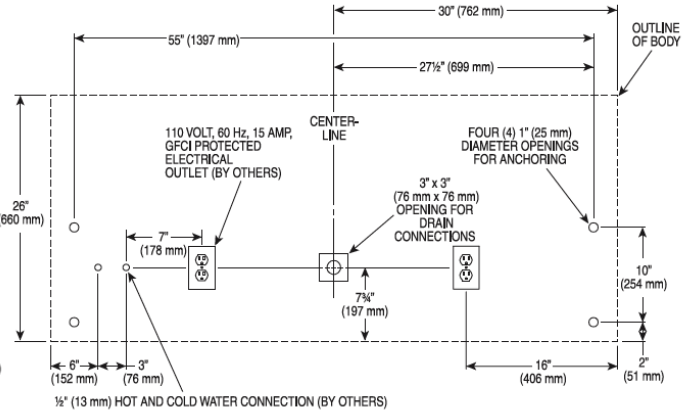
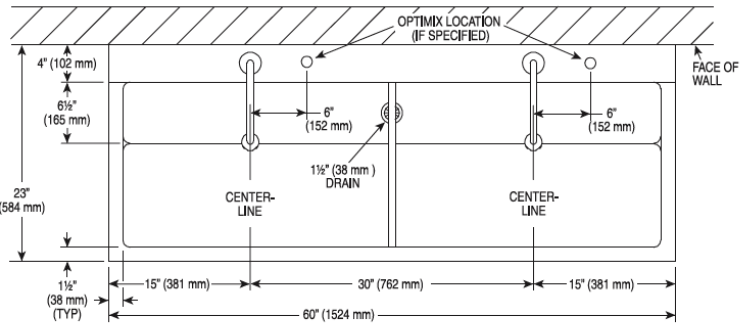
---

## Notes

All information contained within this document subject to change without notice.

[Find a compatible faucet](#) for this sink.

[Find a matching soap dispenser](#) for this sink.



‡ MOUNTING HEIGHT CAN VARY TO MEET INSTALLATION REQUIREMENTS.