



## SloanStone® Solid Surface Sink

EWF-43000

### Product description

SloanStone® Solid Surface 3-Station Wall-Mounted Wash Fountain Sink.

### Compliances & Certifications



IGC156

(ADA Compliant, BAA Compliant, BABAA Compliant, IGC 156)

### Code EWF-43000

#### Downloads

- [EWF 40000 Installation Instructions.pdf](#)
- [EWF-40000 Series Repair and Maintenance Guide.pdf](#)
- [Sink Brochure.pdf](#)
- [SloanStone® Sinks Brochure.pdf](#)
- [Additional Downloads](#)

#### Videos

- [Sloan – Company Overview](#)

Details

- Material:
  - SloanStone Solid Surface
- Width: 36" (914mm)

Features

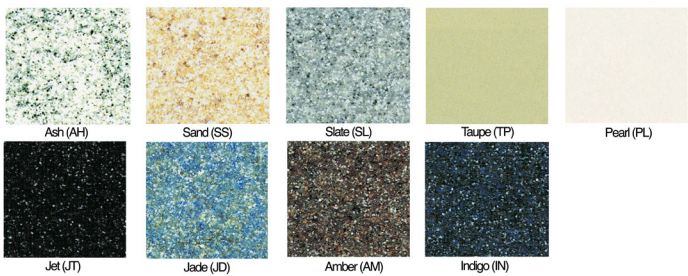
Triple Station Lavatory System with Sloan Electronic Sensor Technology with the following features:

- Lavatory constructed of Non-porous SloanStone Solid Surface Material
- Single continuous basin design
- Sloan Optima Electronic Sensor Technology for hands free operation
- Lavatory System is shipped pre-plumbed with Sloan Electronic Controls for easy installation
- Front access panels for easy maintenance access

SloanStone sinks are a one-piece molded design with a slight angle outward at the side aprons to facilitate the fabrication process thus the overall length of the sink measured along the bottom edge may be up to ½" greater than noted length. SloanStone sinks are commonly available in one to four station lengths (most models) and cannot be seamed together to create a longer sink layout.

Please note that scratches on dark, high gloss finishes may be noticeable and require periodic refinishing to maintain the glossy appearance. Take care placing and sliding objects that may scratch the surface.

Colors



Recommended specifications

SloanStone Series Sink model no. EWF 4X000 Washstation Style Sink. Product to be molded using SloanStone solid surface. Sloan integrated automated sensor faucets. Sink design to be ADA compliant and IAPMO certified. Supplied with enclosure.

Suggested Faucets

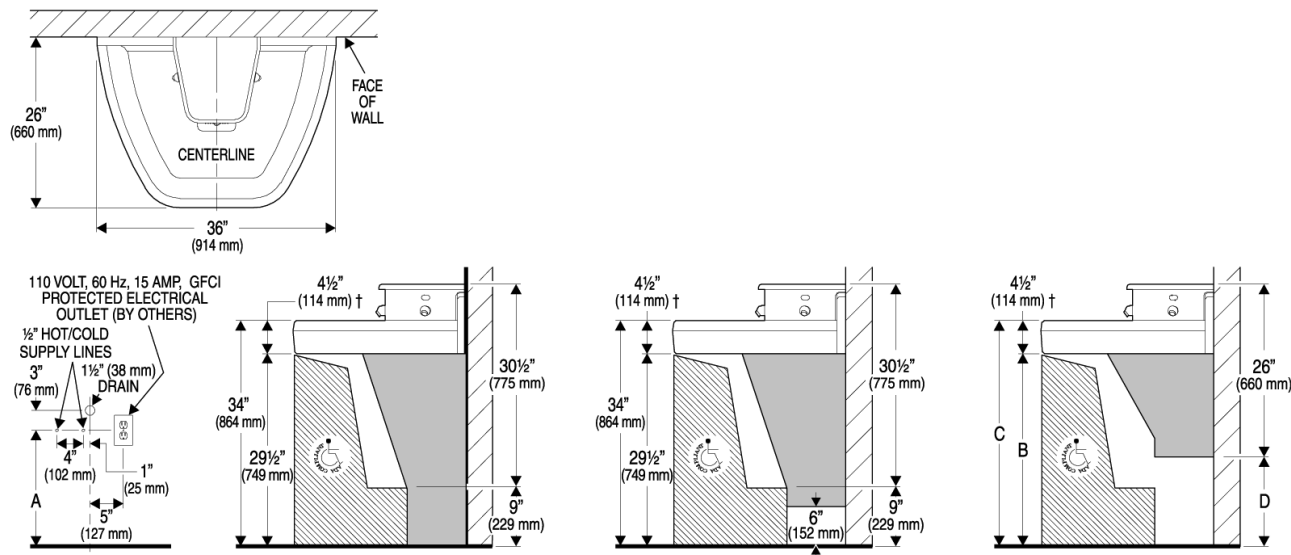
Warranty

[View Warranty Information](#)

Notes

All information contained within this document subject to change without notice.

[Find a compatible faucet](#) for this sink.  
[Find a matching soap dispenser](#) for this sink.



← FROM AUTOCAD, SIZE WITDH TO HERE →

THEN SEPARATE (SPACE) DRAWINGS AS SHOWN ABOVE