



## Designer Series™ Sink

DSCT-82000

### Product description

Designer Series™ 2-Station Wall-Mounted Counter Top Sink.

### Compliances & Certifications



(ADA Compliant, BAA Compliant, IGC 156)

### Code DSCT-82000

#### Downloads

- [Sink Install Manual.pdf](#)
- [Sink Brochure.pdf](#)
- [Sink Systems Brochure.pdf](#)
- [Additional Downloads](#)

#### Videos

- [Sink Configurator](#)

Details

- Material:
  - Corian
  - Quartz
- Width: 60" (1524mm)

Features

Two Station Lavatory System with the following features:

- Dimensions: 60" x 24" x 5"
- A monolithic console available in Corian or quartz
- Undermount bowls available in vitreous china or solid surface
- Many customization options - see architectural worksheet for all options
- Pairs great with Sloan faucets and soap dispensers



Colors

For a complete list of Corian® colors:  
<http://www.corian.com/-colors-of-corian-r->  
For a complete list of Corian® quartz colors:  
<https://www.corianquartz.com/-colors-of-quartz->

Recommended specifications

Sloan Designer Series Sink model no. DSCT 8X000 Countertop Style Sink. Product to be fabricated out of Corian or quartz with vitreous china or solid surface undermount bowls. Sloan automated sensor faucet. Sloan sensor operated foam soap dispenser. Sink design to be ADA compliant and IAPMO certified. Supplied with angle brackets.

Suggested Faucets

	Name	Description	
	EBF-650	Optima® Battery or Turbine-Powered Deck-Mounted Low Integrated Base Body Faucet	<a href="#">View</a>
	EBF-615	Optima® Battery or Turbine-Powered Deck-Mounted Low Body Faucet	<a href="#">View</a>

Warranty

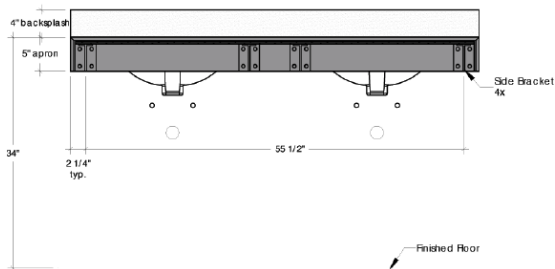
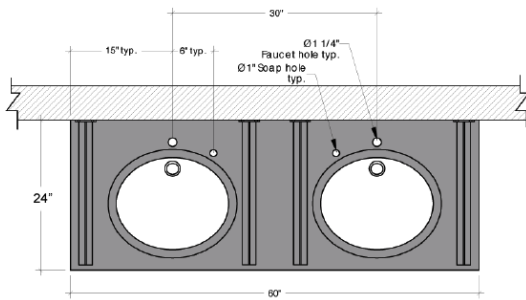
[View Warranty Information](#)

Notes

All information contained within this document subject to change without notice.

Many customization options - see [architectural worksheet](#) for all options.

[Find a compatible faucet](#) for this sink.  
[Find a matching soap dispenser](#) for this sink.



Note: Mount brackets to allow clearance for plumbing, optimal spacing between all brackets is 18" +/- 3".

