



## Optima® Sensor Faucet

EAF-250

### Product description

Optima® Battery-Powered Deck-Mounted Mid Body Faucet.

### Compliances & Certifications



(ADA Compliant, ASME A112.18.1 Compliant, BREEAM Materials Credit, BREEAM Water Credit, CalGreen Compliant, CEC Compliant, cUPC Certified, EPD, Green Globes Credit, Green Globes Water, HPD, IAPMO, LEED Credit, LEED HPD, LEED Water, NSF-61/CAN-61, NYC604.4, Proposition 65, Satisfies LEED Credits, TAS, WELL Building Standard)

Listed compliances and certifications may vary based on product variation.

### Finish



Available in Polished Chrome (CP), Graphite (GR), Brushed Stainless (SF), Brushed Nickel (BN), Polished Brass (PB).

### Downloads

- [EAF 200\\_225\\_250\\_275 Installation Instructions](#)
- [EAF 200\\_225\\_250\\_275 \(SP\) Installation Instructions](#)
- [Faucet Spray Heads Maintenance Guide](#)
- [Optima Plus EAF 250 Repair and Maintenance Guide](#)
- [Faucet and Soap Dispenser Brochure](#)
- [Faucets Brochure \(Spanish\)](#)
- [Additional Downloads](#)

### Videos

- [PVD Special Finishes](#)

---

## Features

Commercial Grade, ADA Compliant, Electronic, Sensor-Activated, Die-Cast Metal Hand Washing Faucet with the following features:

- Double Infrared Sensors with Automatic Setting Feature and Microprocessor
- Automatic Self-adapting Sensor Technology
- Low Battery Indicator
- Magnetic Solenoid Valve
- Water Supply Connection with Flexible High-pressure Hose and Strainer
- 6 volt Lithium CR-P2 Commercial Battery included
- Appropriate Mounting Hardware included
- 3 year limited warranty

---

## Warranty

[View Warranty Information](#)

---

## Notes

All information contained within this document subject to change without notice.

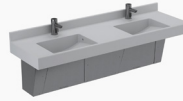
## Compatible products



### ELC-81000

SloanStone® Solid Surface 2-Station Wall-Mounted Counter Top Sink

[View product >](#)



### ELC-82000

SloanStone® Solid Surface 2-Station Wall-Mounted Counter Top Sink

[View product >](#)

## Featured projects



### Chase Center

San Francisco, CA

[View project >](#)



### River Forest Tennis Club

River Forest, IL

[View project >](#)

## Featured collections



### State Street®

Dazzle with contrast and solar-powered technology

[View collection >](#)

## Featured room ideas



### Fitness Center

Streamlined forms and sporty tones define this room idea for fitness centers.

[View room idea >](#)

## Featured markets



### Hospitality

Reliable performance and elevated aesthetics provide guests a stellar experience.

[View featured market >](#)