



CX Sensor Flushometer

CX 8154-1.6-SF

Product description

1.6 gpf, Filtered, Brushed Stainless Finish, Fixture Connection Rear Spud, Single Flush, Integrated Control Stop, Adjustable Flush Connection Outlet Tube, Electrical Override, Battery with Hardwired Option, Sensor-Operated, Short V500A & Adjustable Flush Connection Vacuum Breaker, Front Accessible Wall Box, CX Concealed Sensor Floor-Mounted Water Closet Flushometer.

Compliances & Certifications



(ADA Compliant, BAA Compliant, BABAA Compliant, cUPC Certified, IAPMO)

Code 3400334

Finish

 Brushed Stainless (SF)

Downloads

- [CX 8158_8198 Installation Instructions.pdf](#)
- [CXSensor.pdf](#)
- [CX Flushometer Brochure.pdf](#)
- [Special Finishes Brochure.pdf](#)
- [Additional Downloads](#)

Videos

- [CX Flushometer Product Video](#)
- [CX Flushometer - Sensor Installation](#)
- [CX Flushometer - Sensor Vacuum Service](#)

Details

- Flush Volume: 1.6 gpf (6.0 lpf)
- Finish: Brushed Stainless (SF)
- Power Type: Battery with Hardwired Option
- Valve: Piston
- Bypass: Filtered
- Valve Body Material: Semi-red Brass
- Fixture Type: Water Closet
- Closet Mounting: Floor-Mounted
- Fixture Connection: Rear Spud
- Override: Electrical
- Wall Box: Front Accessible
- Control Stop: Integrated
- Vacuum Breaker: Short V500A & Adjustable Flush Connection
- Outlet Tube: Adjustable Flush Connection

Features

- Fixed volume piston with filtered O-ring bypass
- Front access wall plate requires no rear access plumbing chase
- Sensor activated, hands-free operation
- Battery operated with hardwired option
- Electronic override button
- Low battery indicator light
- Vandal resistant wall plate
- Adjustable flush connection
- 8 1/2"(W) x 9 1/4"(H) Wall Box Panel Dimension

Electrical specifications

- Arming Delay: 8 seconds
- Control Circuit:
 - 6 VDC Input
- Flush Delay: 3 seconds
- Sensor Range: 22"-46" (559 - 1168mm)
- Self-Adaptive Window: ±12"
- Solenoid Operator: 6 VAC
- Transformers (Specify Separately):
 - EL-386/0345095 (Up to 1 Flushometer)
 - EL-451/0345125 (Up to 6 Flushometers)

Valve Operating Pressure (Flowing)

20-80 psi (138 - 552 kPa). Specific fixtures may require greater minimum flowing pressure - consult manufacturer requirements.

Warranty

[View Warranty Information](#)

Notes

All information contained within this document subject to change without notice.

Looking for other variations of the CX 8154 product? [View the general spec sheet with all options.](#)

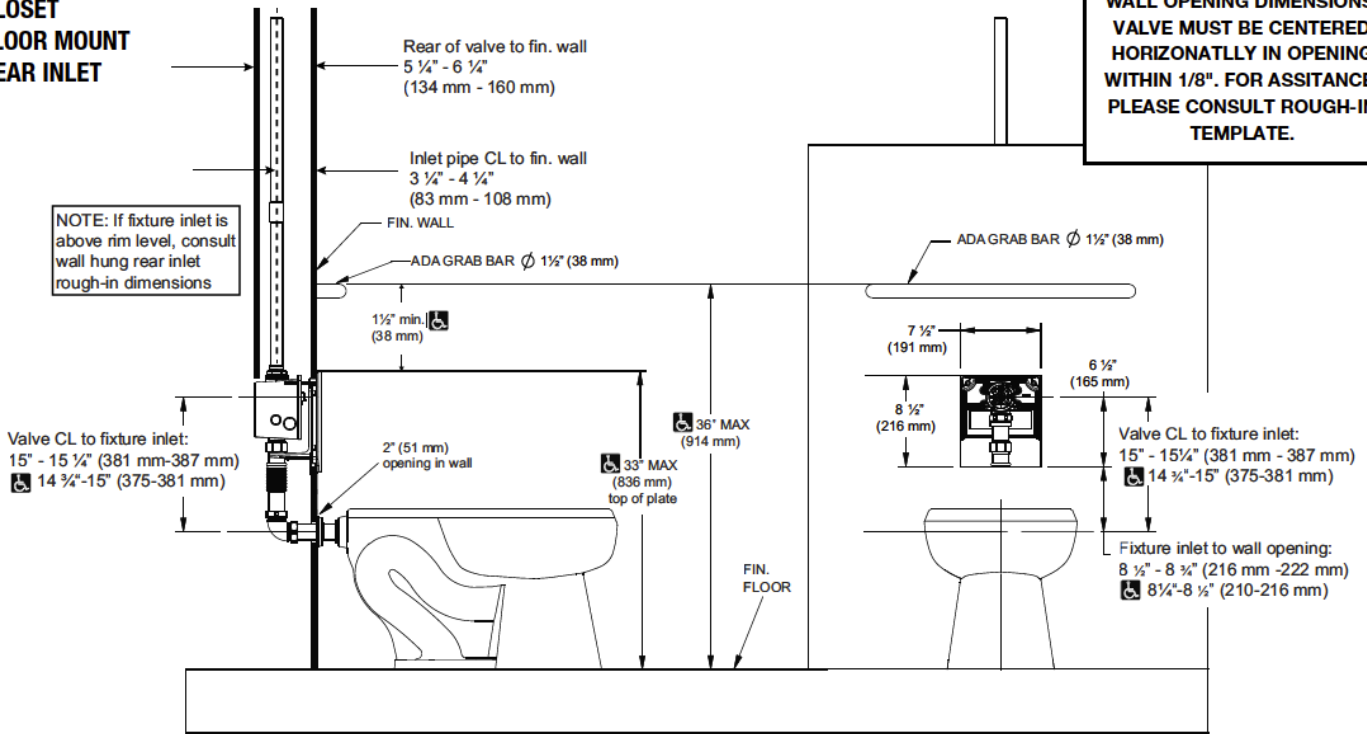
[Find a compatible urinal](#) for this flushometer.

[Find a compatible water closet](#) for this flushometer.

**MODEL 8154
CLOSET
FLOOR MOUNT
REAR INLET**

SIDE VIEW

FRONT VIEW



!!! IMPORTANT !!!
ACCURACY IS IMPORTANT FOR WALL OPENING DIMENSIONS. VALVE MUST BE CENTERED HORIZONATLLY IN OPENING WITHIN 1/8". FOR ASSITANCE, PLEASE CONSULT ROUGH-IN TEMPLATE.