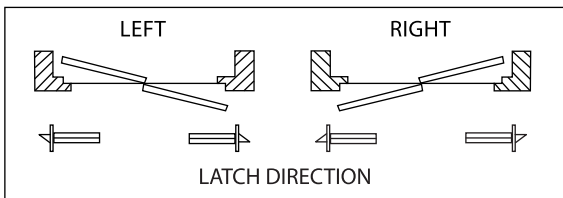


BS 3621 + CE 5 Lever Sash Lock

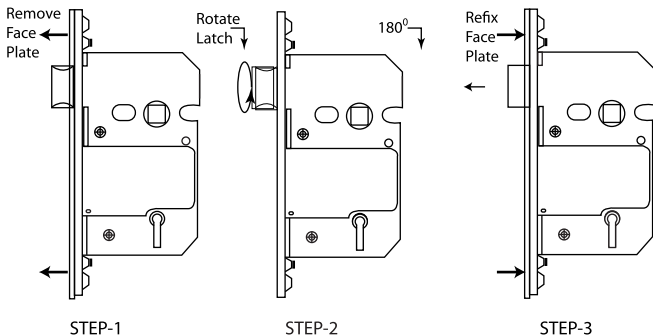
TIMCO *elite*

PLEASE READ INSTRUCTIONS CAREFULLY BEFORE BEGINNING INSTALLATION

1. Determine the latch direction according to door handing as shown in fig.1.



2. Refer to fig 2, if the latch direction needs reversing.



3. Position lock in mortise and mark around outer forend. Remove the lock and create a recess 4.7mm deep at the previously marked position. Remove the outer forend, replace the lock. For fire door application use intumescent packs (1 pack per latch / lock, 1mm for 30 mins. & 2mm for 60 mins).

4. Insert lock into door and secure with screws supplied determine the position of the strike on the door frame and fix as required fig. 3 & 4

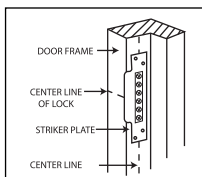


fig.3

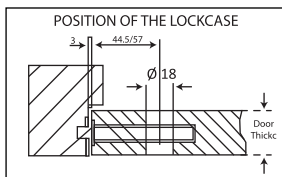


fig.4

Product maintenance & Safety : Please ensure that the operation of the lock and ensure that all fixings are secure and adjust if required. These checks must be carried out every 3 months. Ensure that the strike plate / box keep is correctly in line and that the door has not dropped. Also ensure that the strike plate / box keeps are completely clear of any obstructions and the both latch bolts and Deadbolts are clear to enter without problems.

The Locks have been Produced by the manufacturer to provide smooth operation when fitted. these Locks shall be lubricated regularly with WD40 oil or its equivalent grade. after every 25000 cycle to ensure optimum performance.

Warning : The Safety features of this product are essential to its compliance with BS 3621:2007. No modification of any kind, other than those described in these instructions are permitted.

Notes :

- ❖ This 5 lever lock is intended for use in hinged timber doors with the lock in a mortice.
- ❖ The locks have been tested for use on doors of sizes up to 2100mm by 1100mm with a mass of up to 100 kg.
- ❖ The locks have been tested for use at a temperature range of -10 °C to + 60 °C.
- ❖ The locks have been design for use with a door gap between 2mm and 4mm.
- ❖ The lock must be installed with all supplied keeps and fixing screws.
- ❖ The lock is to be used with sprung or spring assisted furniture.

			D.P. Garg & Company Pvt. Ltd. B-210B, Phase-2, Noida - 201305 (U.P.) India Ph. No.: +91-120-2460091, 2460085-87 Fax. 91-120 2460083		25									
			2797-CPR-805686	0086-CPR-805689	BS 3621:2007	2	H	4	0	0	F	7	K	D
			BSEN: 12209:2003	3	M	8	1	0	G	7	K	D	1	B

For Declaration of performance please go to www.garglocks.co.in