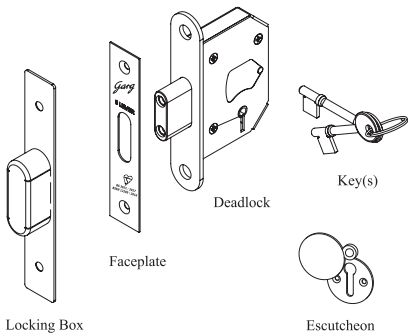


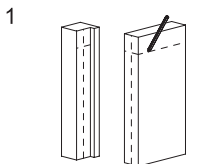
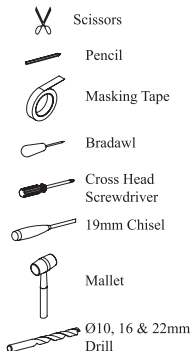
# BS 3621 + CE 5 Lever Mortice Deadlock

TIMCO / elite

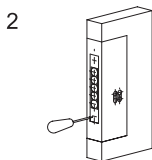
## General View of Main Parts



## Tools Required

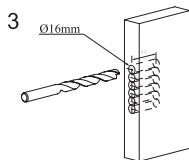


Mark centreline of door and frame.  
At required height mark a horizontal line on door and frame.

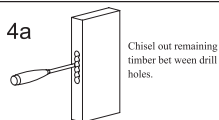


Using the centreline guide and height guide, tape templates to door.

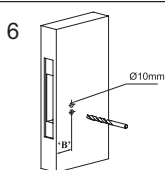
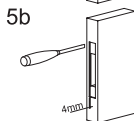
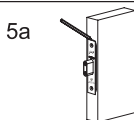
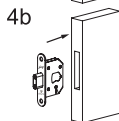
Mark the centres of all holes with a bradawl then remove template.



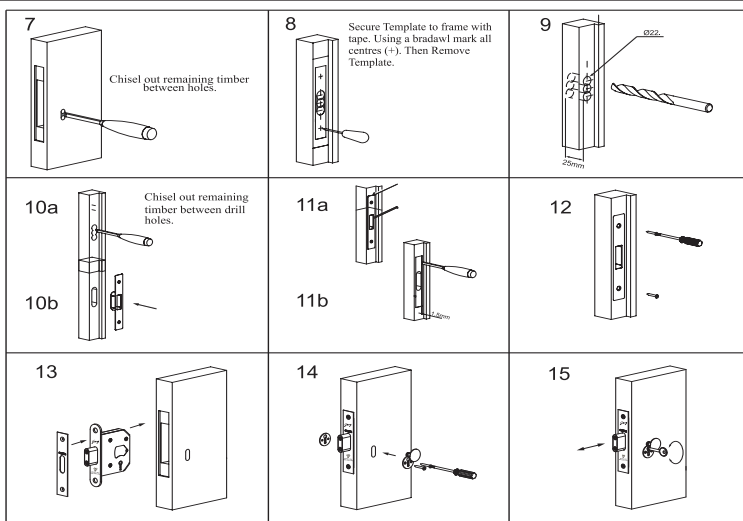
	Dim 'A'
64mm Lock	72mm
76mm Lock	85mm



Chisel out remaining timber between drill holes.



	Dim 'B'
64mm Lock	45mm
76mm Lock	57.5mm



**Product Maintenance & Safety:** Please ensure that the operation of the lock and ensure that all fixing are secure and adjust if required. These checks must be carried out every 3 month. Ensure that the strike plate / box keep is correctly in line and that the door has not dropped. Also ensure that the strike plate / box keeps are completely clear of any obstructions and that both latch bolts and Dead Bolts are clear to enter without problems.

The Locks have been Produced by the manufacturer to provide smooth operation when fitted. these Locks shall be lubricated regularly with WD40 oil or its equivalent grade.

**Warning:** The Safety features of this product are essential to its compliance with BS 3621 : 2007. No Modification of any kind, other than those described in these instruction are permitted.

**Note:**

- ❖ This 5 lever lock is intended for use in hinged timber doors with the lock in a mortice.
- ❖ The locks have been tested for use on doors of sizes up to 2100mm by 1100mm with a mass of up to 100 kg.
- ❖ The locks have been tested for use at a temperature range of -10°C to +60°C.
- ❖ The locks have been design for use with a door gap between 2mm and 4mm.
- ❖ The lock must be installed with all supplied keeps and fixing screws.

			<b>D.P. Garg &amp; Company Pvt. Ltd.</b> B-210B, Phase-2, Noida - 201305 (U.P.) India Ph. No.: +91-120-2460091, 2460085-87 Fax. 91-120 2460083		25
			BS 3621:2007	2   H   4   0   0   F   7   K   D   0   B	
2797-CPR-805686	0086-CPR-805689	BSEN: 12209:2003	3   M   8   1   0   G   7   K   D   0   B		