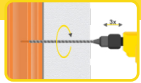


ziel-plast®

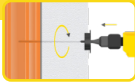
European manufacturer of insulation fasteners



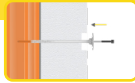
CE approved to Regulation (EU) 305/2011 & third-party tested (ETA-23/0351)



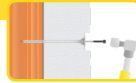
Drill the hole perpendicular to the substrate surface. Clean the drill hole.



Drill the recess for immersed installation with the tool ZP-FS.



Place the anchor into the drilled hole. The bottom side of the plate must be flush with the ETICS.



Drive in the specific nail with the hammer.



Insert the insulation cover.



Installed condition.

ETX-M Insulation Fixings

NEW

Steel

Advanced hammer-in insulation fixing with a steel pin and an impact resistant head for fixing external thermal insulation (ETICS) into concrete and masonry.

- Steel pin with plastic insulator prevents the formation of a thermal bridge
- Specifically designed to reduce installation time
- Increased strength parameters
- Compatible with TDW110 Insulation Fixing Washer for easier installation of softer materials such as insulation wool



CONCRETE BRICK BLOCK

| Product Code | Size Ø x L (mm) | Max. Fixture Thickness (mm) | Drill Hole Ø (mm) | Min. Embedment Depth (mm) | Pack Qty (pcs) | Pallet Qty (packs) |
|--------------|-----------------|-----------------------------|-------------------|---------------------------|----------------|--------------------|
| BOX | | | | | | |
| EM095 | 8.0x95 | 70 | 8.0 | 25 | 100 | 100 |
| EM115 | 8.0x115 | 90 | 8.0 | 25 | 100 | 100 |
| EM135 | 8.0x135 | 110 | 8.0 | 25 | 100 | 100 |
| EM155 | 8.0x155 | 130 | 8.0 | 25 | 100 | 100 |
| EM175 | 8.0x175 | 150 | 8.0 | 25 | 100 | 84 |
| EM195 | 8.0x195 | 170 | 8.0 | 25 | 100 | 84 |
| EM215 | 8.0x215 | 190 | 8.0 | 25 | 100 | 84 |
| EM235 | 8.0x235 | 210 | 8.0 | 25 | 100 | 56 |
| EM255 | 8.0x255 | 230 | 8.0 | 25 | 100 | 56 |
| EM275 | 8.0x275 | 250 | 8.0 | 25 | 100 | 56 |
| EM295 | 8.0x295 | 270 | 8.0 | 25 | 100 | 56 |

ZPL01

See website for technical and performance data.