

Vacuum pump MINI L7, conn. Z, NBR seals

Article number: 0102633



- Large vacuum flows
- Small size and low weight
- Good for handling porous materials or if leakage is present

Technical data

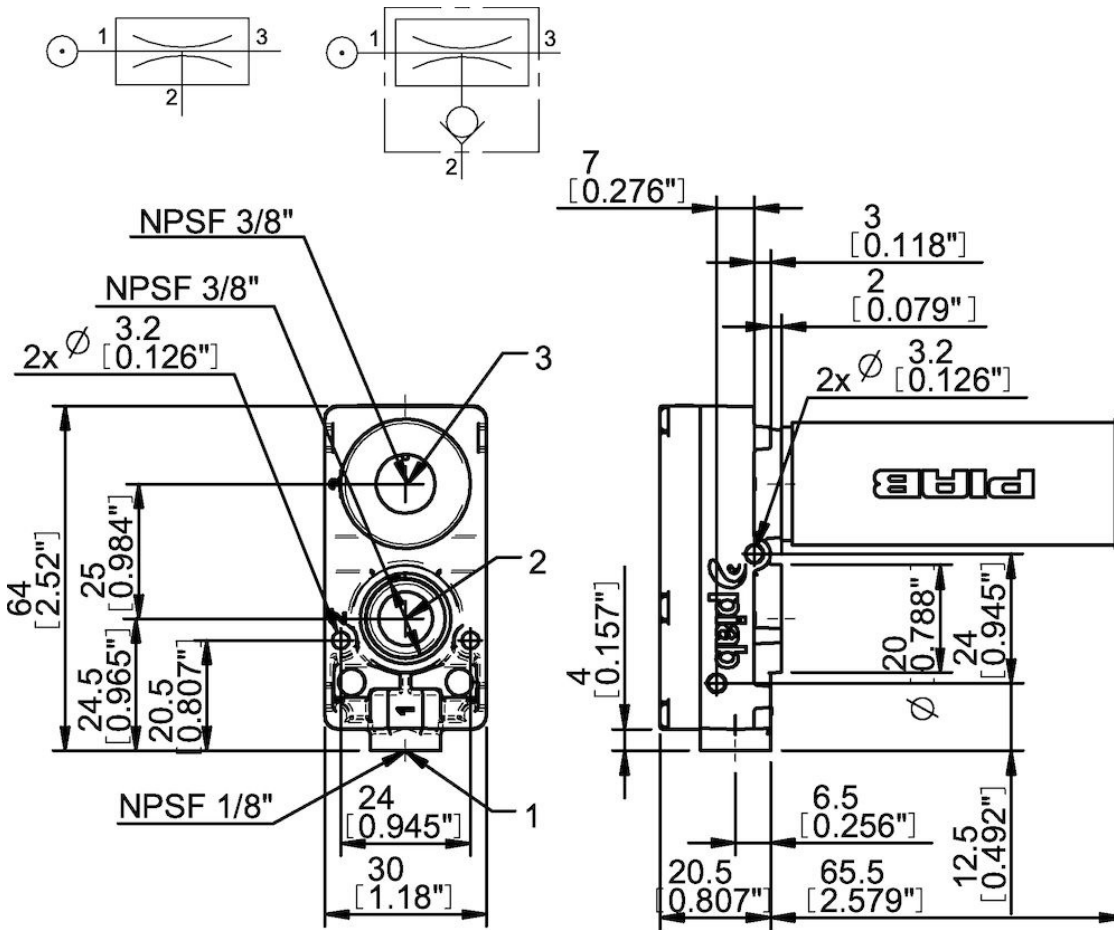
Description	Unit	Value
Material	-	Ethylene Propylene (EPDM), Nitrile (NBR), PA, POM, SS, Viton®
Temperature, max.	°C	80
Temperature, min.	°C	-20
Weight, min.	g	13
Feed pressure, max.	MPa	0.7
Noise level, max.	dBA	68
Noise level, min.	dBA	57

Performance

Feed pressure MPa	Air consumption Nl/s	Vacuum flow (Nl/s) at different vacuum levels (-kPa)													Max vacuum kPa
		0	10	20	30	40	50	60	70	75	80	90	95	99	
0.6	0.49	0.72	0.49	0.29	0.25	0.2	0.16	0.1	0.067	0	0	0	0	0	≥75

Feed pressure MPa	Air consumption Nl/s	Evacuation time (s/l) to reach different vacuum levels (-kPa)													Max vacuum kPa
		10	20	30	40	50	60	70	80	90	95	99	99.5	100.3	
0.6	0.49	0.093	0.31	0.72	1.2	1.8	2.6	3.8	0	0	0	0	0	0	≥75

Dimensional drawings



Values specified in this datasheet are tested at (unless otherwise stated):

- Room temperature (20°C [68°F] ± 3°C [5.5°F]).
- Standard atmosphere (101.3 [29.9 inHg] ± 1.0 kPa [0.3 inHg]).
- Compressed air quality, DIN ISO 8573-1 class 4.

Tolerance and accuracy:

- Feed pressure tolerance ±0.02 MPa [2.9 psi]
- Vacuum flow/evacuation time accuracy ±10%.

Spare parts

- 3201097 | Sealing kit MINI 5-28, NBR
- 3201097E | Sealing kit MINI 5-28, EPDM
- 3201097V | Sealing kit MINI 5-28, Viton®