

John Guest MDPE Compression Conversion Adaptor MPDE to Copper / PEX / PB

Securely and quickly connects a variety of pipe materials to an MDPE system

Overview

John Guest MDPE Compression Conversion Adaptor is designed to provide a secure and reliable connection between MDPE pipe and a variety of plumbing pipe materials, including Copper, Polybutylene and PEX. The integrated push-fit technology ensures ease of installation across system types.

Manufactured with a compact and durable design, this fitting is suited for cold water service installations where a transition between systems are required

Supplied pre-assembled and installation-ready, it offers a quick and efficient solution without the need for specialist tools or heat-based joining methods. The demountable connection makes it easy to work with in the ground during maintenance or alteration of an existing setup.



Features & Benefits

- Durable MDPE Compression Conversion Adaptor
- Enables seamless and secure transition between MDPE and other pipe system materials, including Copper, PEX and Polybutylene
- Strong compression connection for a leak-free joint without the need for heat or chemicals
- Instant push-fit connection features a stainless steel grab ring for enhanced grip on the pipe
- Quick and easy to install and demount without the need for specialist tools
- High-grade polypropylene body for durability and high impact resistance
- Corrosion-resistant and inhibits biological growth, making it suitable for outdoor and underground use
- Suitable for cold water use only

Product code	Description	Bag QTY
UGCF01PF2015	John Guest MDPE Compression Conversion Adaptor - MPDE to Copper / PEX / PB	10
UGCF01PF2515	John Guest MDPE Compression Conversion Adaptor - MPDE to Copper / PEX / PB	20
UGCF01PF2522	John Guest MDPE Compression Conversion Adaptor - MPDE to Copper / PEX / PB	10
UGCF01PF3222	John Guest MDPE Compression Conversion Adaptor - MPDE to Copper / PEX / PB	10
UGCF01PF3228	John Guest MDPE Compression Conversion Adaptor - MPDE to Copper / PEX / PB	10



John Guest MDPE Compression Conversion Adaptor MPDE to Copper / PEX / PB

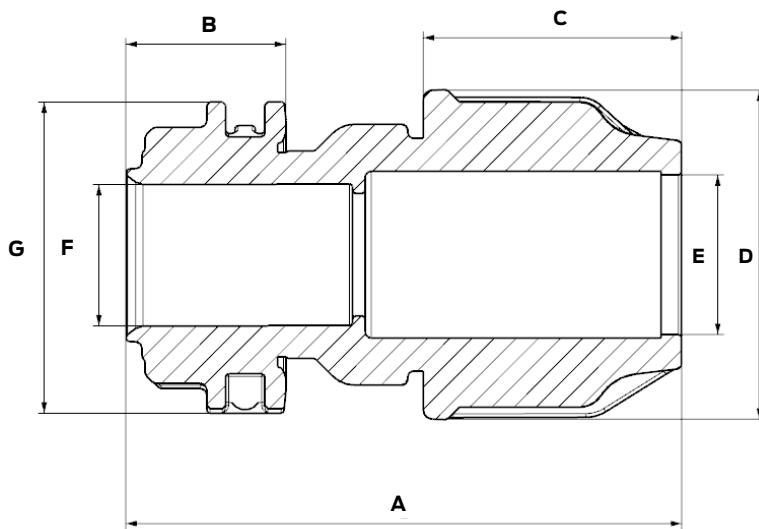
Operating Pressure & Temperature

Fittings are suitable for working pressures up to 16 bar at 20°C

Materials

Body	Polypropylene Copolymer (PP-B)
O-Ring	Nitrile rubber (NBR 70)
Insert Sleeve	Polypropylene Copolymer (PP-B)
Split Ring	Polyacetal (POM)
Grab Ring	Stainless Steel
Compression Nut	Polypropylene Copolymer (PP-B)

Dimensions – All measurements in mm unless otherwise stated



Product Code	Size	A	B	C	D	E	F	G
UGCF01PF2015	20mm x 15mm	86.8	26.2	39.5	46.0	22.2	15.3	38.0
UGCF01PF2515	25mm x 15mm	89.3	26.2	41.3	52.5	26.8	15.3	38.0
UGCF01PF2522	25mm x 22mm	85.0	25.6	41.3	52.5	26.8	22.5	50.8
UGCF01PF3222	32mm x 22mm	100.4	25.6	51.8	63.8	34.0	22.5	50.8
UGCF01PF3228	32mm x 28mm	101.5	26.7	51.8	63.8	34.0	28.5	60.0