

# John Guest MDPE Compression Repair Coupling

Securely and quickly repairs damaged MDPE pipework

## Overview

John Guest MDPE Compression Repair Coupling is designed to provide a secure and reliable connection between two lengths of MDPE pipe of equal diameter where a section of pipe has been damaged or removed.

Manufactured without an internal pipe stop, this fitting can be fully slid over one pipe end and repositioned centrally to complete the joint, making it ideal for emergency repairs and system modifications; ensuring a safe, secure and watertight seal.

Supplied pre-assembled and installation-ready, it offers a quick and efficient solution without the need for specialist tools or heat-based joining methods. The demountable connection makes it easy to work with in the ground during maintenance or alteration of an existing setup.



## Features & Benefits

- Durable MDPE Compression Repair Coupling
- Designed for pipe repairs, enabling quick and reliable joining of two pipe ends without the need to fully dismantle the system
- No internal pipe stop allows the coupling to slide completely over one pipe end for easy positioning during installation
- Strong compression connection for a leak-free joint without the need for heat or chemicals
- Quick and easy to install and demount without the need for specialist tools
- High-grade polypropylene body for durability and high impact resistance
- Corrosion-resistant and inhibits biological growth, making it suitable for outdoor and underground use
- Compatible with MDPE pipes only
- Suitable for cold water use only

Product code	Description	Bag QTY
UGCF04R25	John Guest MDPE Compression Repair Coupling - 25mm	10
UGCF04R32	John Guest MDPE Compression Repair Coupling - 32mm	5



# John Guest MDPE Compression Repair Coupling

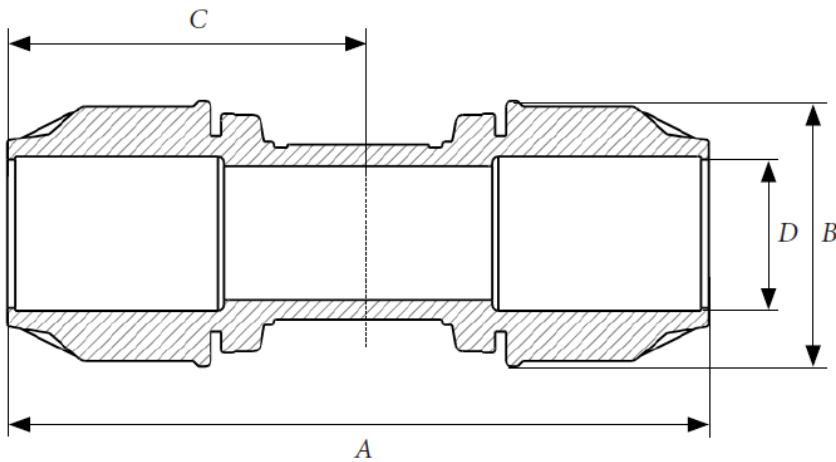
## Operating Pressure & Temperature

Fittings are suitable for working pressures up to 16 bar at 20°C

## Materials

Body	Polypropylene Copolymer (PP-B)
O-Ring	Nitrile rubber (NBR 70)
Insert Sleeve	Polypropylene Copolymer (PP-B)
Split Ring	Polyacetal (POM)
Compression Nut	Polypropylene Copolymer (PP-B)

## Dimensions – All measurements in mm unless otherwise stated



Product Code	Size	A	B	C	D
UGCF04R25	25mm x 25mm	113.5	52.0	57.0	27.0
UGCF04R32	32mm x 32mm	174.0	62.5	87.0	33.5