

3 Port Flow Control Valve Ongoing Pressure Line



USE AND OPERATION:

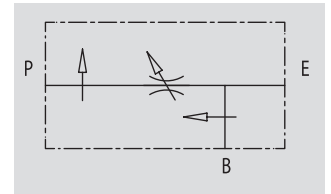
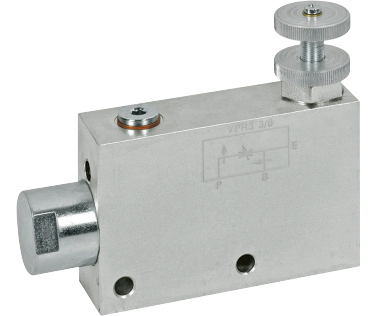
This valve enables to keep "P" flow constant to a certain setting, independently of the required pressure or the inlet flow of the valve. Exceeded flow is drained in "B" and it is available for a second use. Also port "B" is insensitive to pressure changes but not to flow changes.

MATERIALS AND FEATURES:

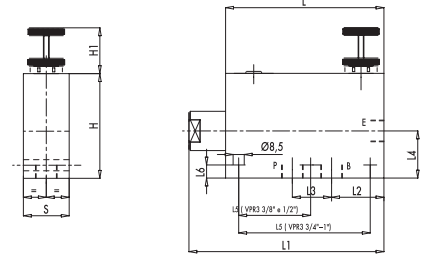
Body: zinc-plated steel
Internal parts: hardened and ground steel
Seal: BUNA N standard
Tightness: by diameter combination. Minor leakage (few drops per minute)

APPLICATIONS:

Connect E to the pressure flow and P to the actuator or to a line of an hydraulic circuit where flow adjustment is needed. Connect B to the tank or to a second actuator. To adjust inlet pressure in P screw in or off hand wheel after loosening the locknut.



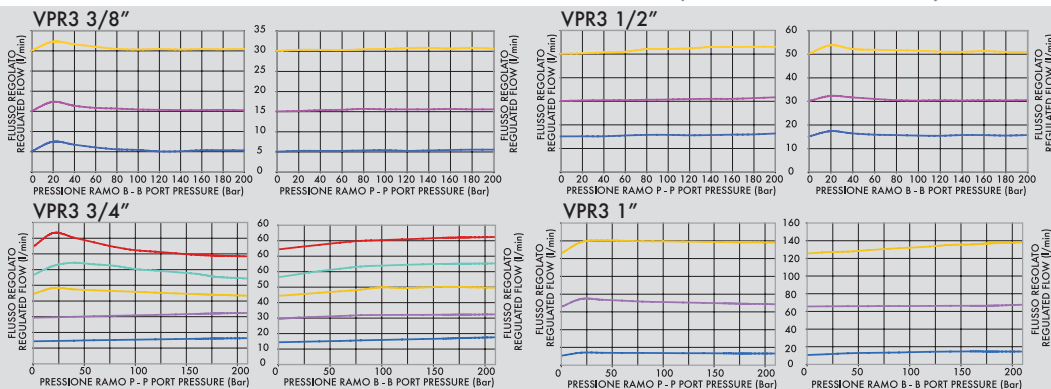
CODE	TYPE	MAX INLET FLOW Lt. / min	MAX ADJUSTED FLOW Lt. / min	MAX PRESSURE Bar
3FCVP06	VPR3 3/8"	60	50	350
3FCVP08	VPR3 1/2"	80	60	350
3FCVP12	VPR3 3/4"	120	100	350
3FCVP16	VPR3 1"	200	170	350

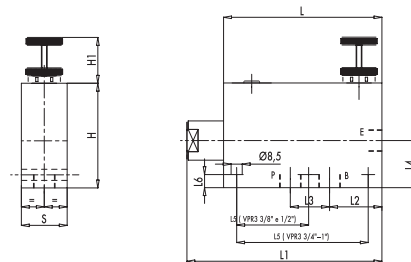


CODICE	SIGLA	E - P . B	L	L1	L2	L3	L4	L5	L6	H	H1	S	PESO
CODE	TYPE	GAS	mm	mm	mm	mm	mm	mm	mm	mm	mm	mm	WEIGHT kg
3FCVP06	VPR3 3/8"	G3/8"	121	147	40	32	36	55	12	80	35	35	2,530
3FCVP08	VPR3 1/2"	G1/2"	121	147	37	36	36	55	12	80	35	35	2,470
3FCVP12	VPR3 3/4"	G3/4"	155	187	50	44	37	115	10	90	35	50	4,958
3FCVP16	VPR3 1"	G1"	155	187	46	58	47	115	12	100	35	50	5,268

COMPENSATION CURVE

Oil temperature: 50° C - Oil viscosity: 30 cSt





CODE	TYPE	MAX INLET FLOW Lt. / min	MAX ADJUSTED FLOW Lt. / min	MAX PRESSURE Bar
3FCVP06	VPR3 3/8"	60	50	350
3FCVP08	VPR3 1/2"	80	60	350
3FCVP12	VPR3 3/4"	120	100	350
3FCVP16	VPR3 1"	200	170	350

CODICE CODE	SIGLA TYPE	E - P . B GAS	L mm	L1 mm	L2 mm	L3 mm	L4 mm	L5 mm	L6 mm	H mm	H1 mm	S mm	PESO WEIGHT kg
3FCVP06	VPR3 3/8"	G3/8"	121	147	40	32	36	55	12	80	35	35	2,530
3FCVP08	VPR3 1/2"	G1/2"	121	147	37	36	36	55	12	80	35	35	2,470
3FCVP12	VPR3 3/4"	G3/4"	155	187	50	44	37	115	10	90	35	50	4,958
3FCVP16	VPR3 1"	G1"	155	187	46	58	47	115	12	100	35	50	5,268