

# Pilot Check Valve with State Detection

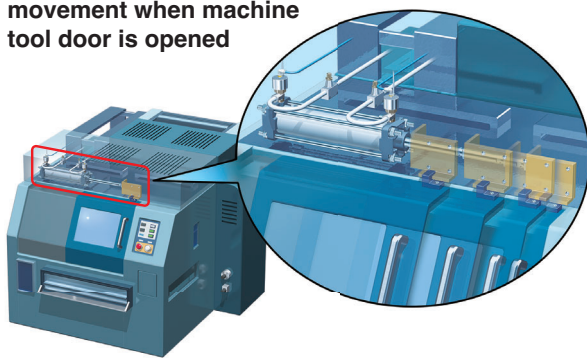
## Features

- The use of positive overlap ensures that signals are output only after the valve has closed completely.
  - \* Positive overlap: Structure that ensures a completely closed state by slightly displacing the position of the valve after it has fully closed (to eliminate the effects of hysteresis)
- The open or closed position of the check valve is detected by the auto switch.
- Wide size variations
  - Body size: 5 types
  - Port size: M5, G1/8, G1/4, G3/8, G1/2

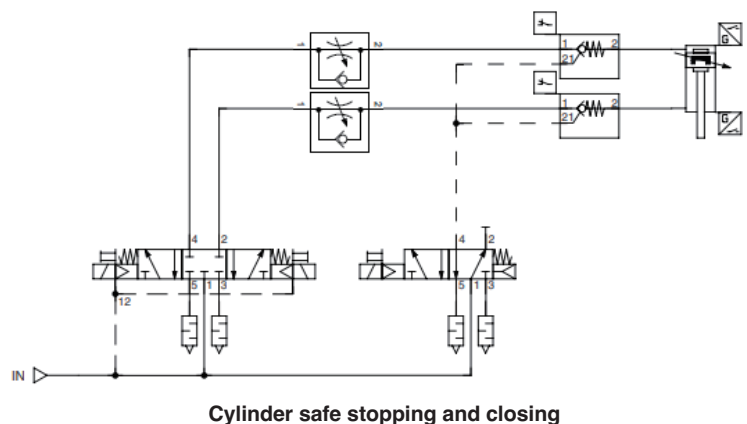


## Application Example

For stopping cylinder movement when machine tool door is opened



## Circuit Example



**XT34-303-□**



SP173X-020EU-UK