

Safety Coupling with Push Button 025S.08



Working Temperature:
-20°C up to +100°C (-4°F +212°F)

Flow capacity:
NW-7.4

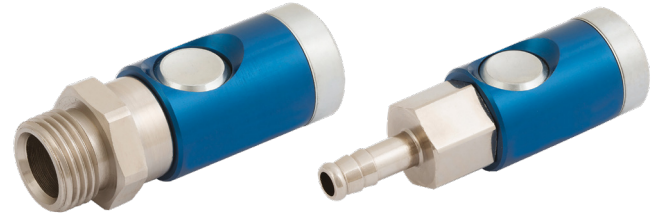
Working Pressure:
0-12 bar (0-508 PSI)

Material:

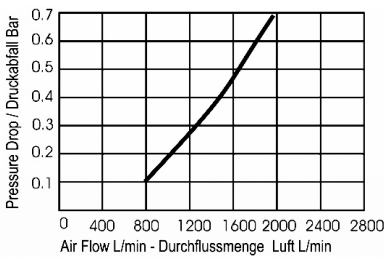
- Inner part: Aluminium
- Back part: Brass Nickel Plated
- Valve: Steel Chrome Plated
- Spring: Stainless Steel
- Coupler Body: Steel Chrome Plated
- Seals: Nitrile (Ni) NBR
- Balls: AISI 420 Hardened
- Push Button: AISI 420 Hardened Steel Chrome Plated

Interchangeability:

- TST 026
- Rectus 25
- Rectus 26
- Parker PEF
- JWL 520
- JWL 530
- Legris



Flow Diagram (Air 6 Bar)



Couplers and Plugs

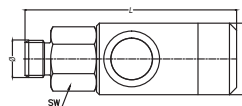
Connection

Order No

SW

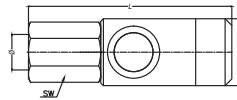
L

øD



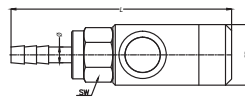
Male Thread Coupling
Kupplung mit Aussengewinde

BSP 1/4"	025.S08 EG 13	20	69.3	26
BSP 3/8"	025.S08 EG 17	20	68.3	26
BSP 1/2"	025.S08 EG 21	25	70.3	26



Female Thread Coupling
Kupplung mit Innengewinde

BSP 1/4"	025.S08 DG 13	20	69.6	26
BSP 3/8"	025.S08 DG 17	20	72.3	26
BSP 1/2"	025.S08 DG 21	24	74.3	26



Standard hose Barb Coupling
Kupplung mit Schlauchtülle

Ø 6 - 1/4"	025.S08 HG 06	20	83.6	26
Ø 8 - 5/16"	025.S08 HG 08	20	83.6	26
Ø 10 - 3/8"	025.S08 HG 10	20	83.6	26