

# John Guest MDPE Compression Imperial to Metric Coupling

Securely and quickly connects Metric MDPE pipe to an Imperial MDPE pipe

## Overview

John Guest MDPE Compression Imperial to Metric Coupling is designed to provide a secure and reliable connection between two lengths of MDPE pipes of differing diameters, enabling a pipe standard transition within a pipeline.

Manufactured with a compact and durable design, this fitting is suited for cold water service installations where the modification or lengthening of a system are required

Supplied pre-assembled and installation-ready, it offers a quick and efficient solution without the need for specialist tools or heat-based joining methods. The demountable connection makes it easy to work with in the ground during maintenance or alteration of an existing setup.



## Features & Benefits

- Durable MDPE Compression Imperial to Metric Coupling
- Reduces between two pipe standards, allowing seamless and secure transition between MDPE metric and imperial pipe sizes
- Strong compression connection for a leak-free joint without the need for heat or chemicals
- Quick and easy to install and demount without the need for specialist tools
- High-grade polypropylene body for durability and high impact resistance
- Corrosion-resistant and inhibits biological growth, making it suitable for outdoor and underground use
- Compatible with MDPE pipes only
- Suitable for cold water use only

Product code	Description	Box QTY
UGCF01IMP2012BSP	John Guest MDPE Compression Imperial to Metric Coupling 20mm x 1/2"	300
UGCF01IMP2512BSP	John Guest MDPE Compression Imperial to Metric Coupling 25mm x 1/2"	250
UGCF01IMP2534BSP	John Guest MDPE Compression Imperial to Metric Coupling 25mm x 3/4"	220



# John Guest MDPE Compression Imperial to Metric Coupling

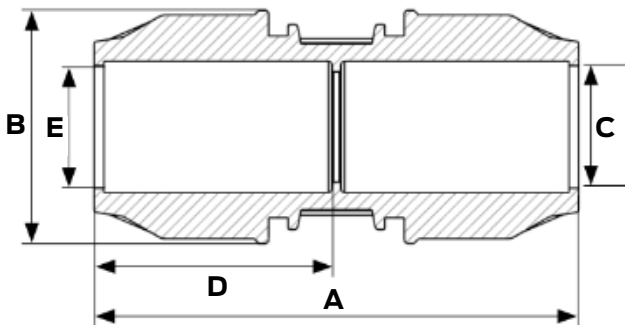
## Operating Pressure & Temperature

Fittings are suitable for working pressures up to 16 bar at 20°C

## Materials

Body	Polypropylene Copolymer (PP-B)
O-Ring	Nitrile rubber (NBR 70)
Insert Sleeve	Polypropylene Copolymer (PP-B)
Split Ring	Polyacetal (POM)
Compression Nut	Polypropylene Copolymer (PP-B)

## Dimensions – All measurements in mm unless otherwise stated



Product Code	Size	A	B	C	D	E
UGCF01IMP2012BSP	20mm x 1/2"	103.0	46.0	22.0	48.0	22.0
UGCF01IMP2512BSP	25mm x 1/2"	109.0	52.0	22.0	65.0	27.0
UGCF01IMP2534BSP	25mm x 3/4"	111.5	52.0	27.0	52.0	27.0