

Round pump COAX® 6xSi32-3

Article number: 0121632



- Energy efficient due to the COAX® technology
- High vacuum flow with 6x COAX® Si MIDI cartridges
- Small, compact and light in weight
- Easy to mount and install in a vacuum line
- Integrated hose connectors

Technical data

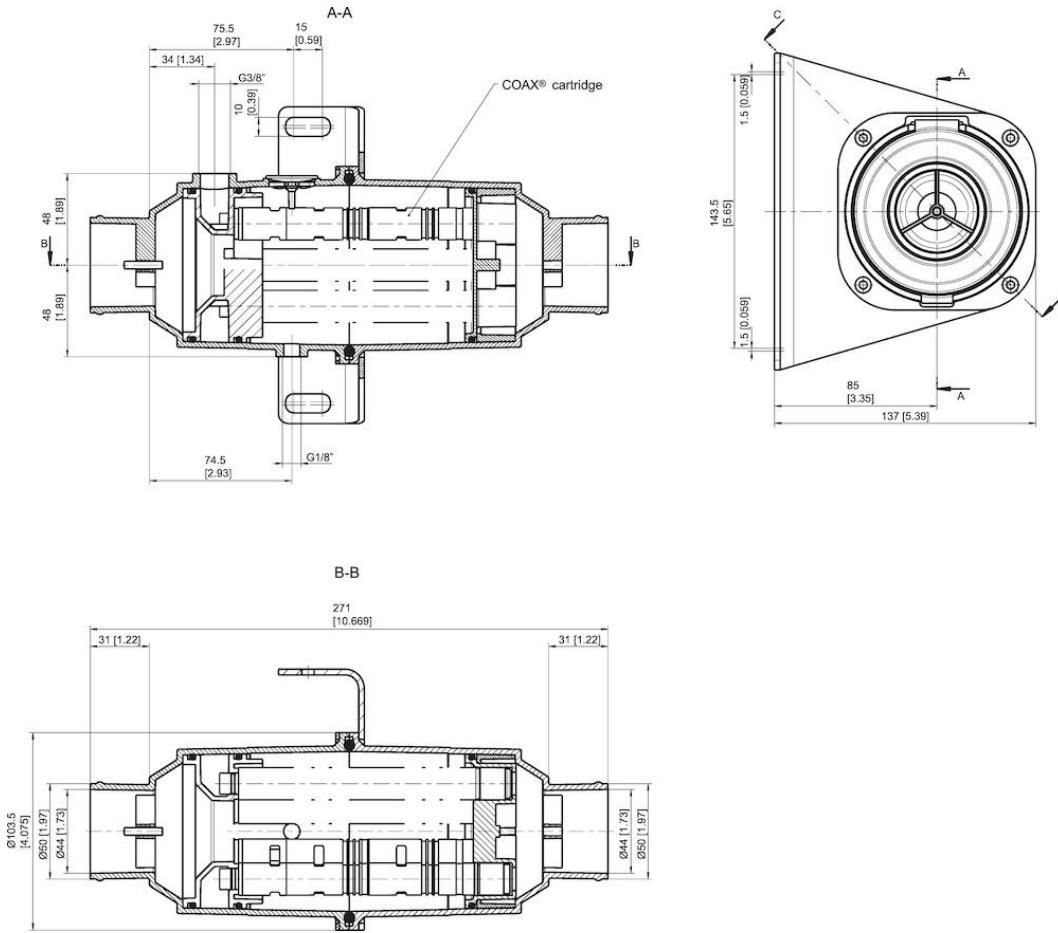
Description	Unit	Value
Material	-	Nitrile (NBR), PA, PPS, SS, Viton®
Temperature, max.	°C	80
Temperature, min.	°C	-10
Weight, min.	g	1130
Feed pressure, max.	MPa	0.7
Noise level, max.	dBA	82
Noise level, min.	dBA	70

Performance

Feed pressure MPa	Air consumption NI/s	Vacuum flow (NI/s) at different vacuum levels (-kPa)														Max vacuum kPa
		0	10	20	30	40	50	60	70	75	80	90	95	99		
0.4	7.5	30	17.4	11.4	7.2	4.8	2.4	0.6	0	0	0	0	0	0	0	≥60
0.5	9	34.2	19.8	13.2	8.4	5.1	3.72	2.1	1.08	0	0	0	0	0	0	≥70
0.6	10.5	36	21	15.6	10.2	5.4	3.6	3	2.1	0	0	0	0	0	0	≥75

Feed pressure MPa	Air consumption NI/s	Evacuation time (s/l) to reach different vacuum levels (-kPa)														Max vacuum kPa
		10	20	30	40	50	60	70	80	90	95	99	99.5	100.3		
0.4	7.5	0.005	0.012	0.023	0.04	0.07	0.167	0	0	0	0	0	0	0	0	≥60
0.5	9	0.003	0.01	0.018	0.035	0.058	0.1	0.167	0	0	0	0	0	0	0	≥70
0.6	10.5	0.003	0.008	0.017	0.03	0.055	0.088	0.133	0	0	0	0	0	0	0	≥75

Dimensional drawings



Values specified in this datasheet are tested at (unless otherwise stated):

- Room temperature (20°C [68°F] ± 3°C [5.5°F]).
- Standard atmosphere (101.3 [29.9 inHg] ± 1.0 kPa [0.3 inHg]).
- Compressed air quality, DIN ISO 8573-1 class 4.

Tolerance and accuracy:

- Feed pressure tolerance ±0.02 MPa [2.9 psi]
- Vacuum flow/evacuation time accuracy ±10%.