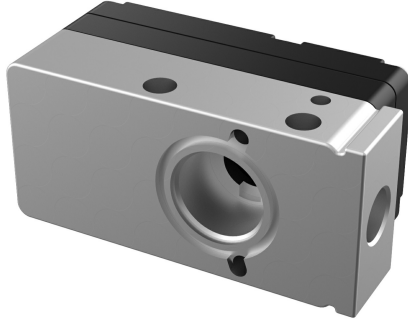


## Vacuum pump MINI X20L, conn. B1, NBR sealings

Article number: 0103203



- Extra vacuum level to 93 -kPa
- Small size and low weight
- Use in tightly sealed or non-porous applications
- Available with connection plate in aluminium (B1) and composite PA (B, C)

### Technical data

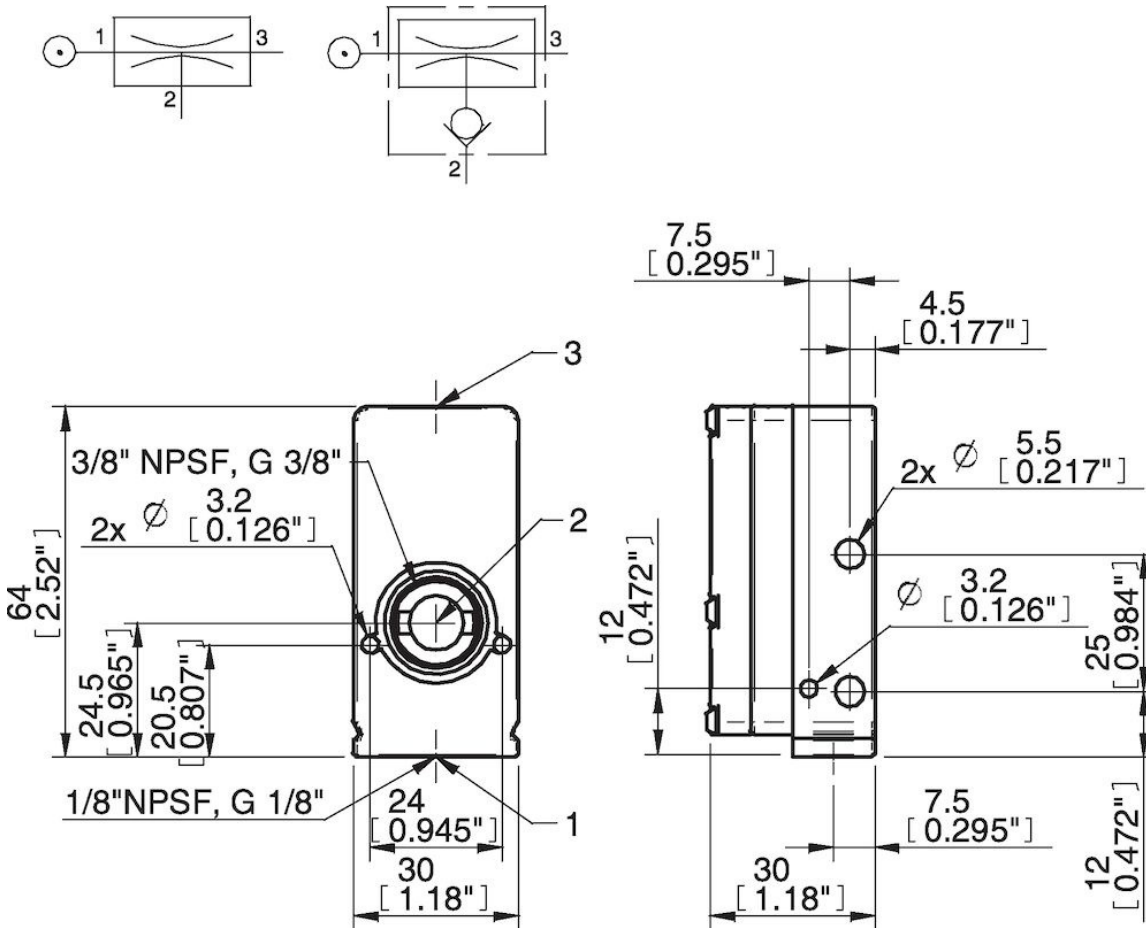
Description	Unit	Value
Material	-	ABS, Al, Nitrile (NBR), PA, POM, SS
Temperature, max.	°C	80
Temperature, min.	°C	-20
Weight, max.	g	74
Weight, min.	g	60
Feed pressure, max.	MPa	0.7
Noise level, max.	dBA	66
Noise level, min.	dBA	62

### Performance

Feed pressure MPa	Air consumption Nl/s	Vacuum flow (Nl/s) at different vacuum levels (-kPa)														Max vacuum kPa
		0	10	20	30	40	50	60	70	75	80	90	95	99		
0.4	1.6	1.9	1	0.5	0.44	0.38	0.3	0.25	0.17	0	0.1	0.02	0	0	≥93	

Feed pressure MPa	Air consumption Nl/s	Evacuation time (s/l) to reach different vacuum levels (-kPa)														Max vacuum kPa
		10	20	30	40	50	60	70	80	90	95	99	99.5	100.3		
0.4	1.6	0.055	0.2	0.4	0.65	0.97	1.4	1.9	2.7	5.1	0	0	0	0	≥93	

## Dimensional drawings



Values specified in this datasheet are tested at (unless otherwise stated):

- Room temperature (20°C [68°F] ± 3°C [5.5°F]).
- Standard atmosphere (101.3 [29.9 inHg] ± 1.0 kPa [0.3 inHg]).
- Compressed air quality, DIN ISO 8573-1 class 4.

Tolerance and accuracy:

- Feed pressure tolerance ±0.02 MPa [2.9 psi]
- Vacuum flow/evacuation time accuracy ±10%.

## Accessories

- 3201097E | Sealing kit MINI 5–28, EPDM
- 3201097V | Sealing kit MINI 5–28, Viton®

## Spare parts

- 3201097 | Sealing kit MINI 5–28, NBR