

John Guest MDPE Compression Female Threaded Elbow

Securely and quickly allows the transition from MDPE pipes to a Female BSP threaded connection via a 90° pipe bend

Overview

John Guest MDPE Compression Female Threaded Elbow is designed to allow for a 90° directional change in a MDPE pipe system whilst also providing a secure Female BSP threaded outlet for connection to a Male BSP fitting. This fitting enables a high degree of adaptability within cold water service systems.

Manufactured with a compact and durable design, it is suited for installations where additional components or pipework transitions are required.

Supplied pre-assembled and installation-ready, it offers a quick and efficient solution without the need for specialist tools or heat-based joining methods. The demountable connection makes it easy to work with in the ground during maintenance or alteration of an existing setup.



Features & Benefits

- Durable MDPE Compression Female Threaded Elbow
- Right-Angle transition, provides a precise 90° bend from MDPE pipe to a Male BSP threaded component via its Female BSP thread connection
- Compact design incorporates both a 90° elbow and adaptor in a single fitting, reducing the need for additional components, connections, and potential leak points
- Strong compression connection for a leak-free joint without the need for heat or chemicals
- Quick and easy to install and demount without the need for specialist tools
- High-grade polypropylene body for durability and high impact resistance
- Corrosion-resistant and inhibits biological growth, making it suitable for outdoor and underground use
- Compatible with MDPE pipes only
- Suitable for cold water use only

Product code	Description	Bag QTY
UGCF75F2012BSP	John Guest MDPE Compression Female Threaded Elbow - 20mm x 1/2"	25
UGCF75F2034BSP	John Guest MDPE Compression Female Threaded Elbow - 20mm x 3/4"	25
UGCF75F2512BSP	John Guest MDPE Compression Female Threaded Elbow - 25mm x 1/2"	20
UGCF75F2534BSP	John Guest MDPE Compression Female Threaded Elbow - 25mm x 3/4"	20
UGCF75F251BSP	John Guest MDPE Compression Female Threaded Elbow - 25mm x 1"	20
UGCF75F321BSP	John Guest MDPE Compression Female Threaded Elbow - 32mm x 1"	10



John Guest MDPE Compression Female Threaded Elbow

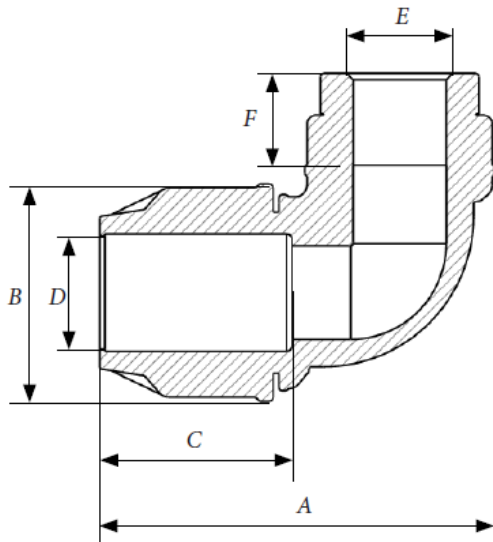
Operating Pressure & Temperature

Fittings are suitable for working pressures up to 16 bar at 20°C

Materials

Body	Polypropylene Copolymer (PP-B)
O-Ring	Nitrile rubber (NBR 70)
Insert Sleeve	Polypropylene Copolymer (PP-B)
Split Ring	Polyacetal (POM)
Compression Nut	Polypropylene Copolymer (PP-B)

Dimensions – All measurements in mm unless otherwise stated



Product Code	Size	A	B	C	D	E	F
UGCF75F2012BSP	20mm x 1/2"	84.0	46.0	47.0	22.0	1/2"	17.5
UGCF75F2034BSP	20mm x 3/4"	86.0	46.0	46.0	22.0	3/4"	18.0
UGCF75F2512BSP	25mm x 1/2"	91.5	52.0	52.5	27.0	1/2"	17.5
UGCF75F2534BSP	25mm x 3/4"	95.5	52.0	53.0	27.0	3/4"	18.0
UGCF75F251BSP	25mm x 1"	100.5	52.0	51.5	27.0	1"	22.0
UGCF75F321BSP	32mm x 1"	112.0	62.5	63.5	33.5	1"	22.0