

## Lab Vac LVH40K6, Viton® sealings, Kalrez flap valves

Article number: 0103684



- Vacuum pumps tailor-made for laboratory applications, such as degassing, vacuum filtering, gel drying and rotation evaporation.
- High vacuum levels to 20 mbar abs. with a maximum vacuum flow of 9 m<sup>3</sup>/h.
- No risk for "back draft" which can cause damaged test samples.
- Low noise level.
- Easy to install and virtually no maintenance.
- Energy efficient vacuum pumps based on environmental friendly technology.
- High chemical resistance, option with KalRez sealing material makes the chemical resistance unsurpassed.

### Technical data

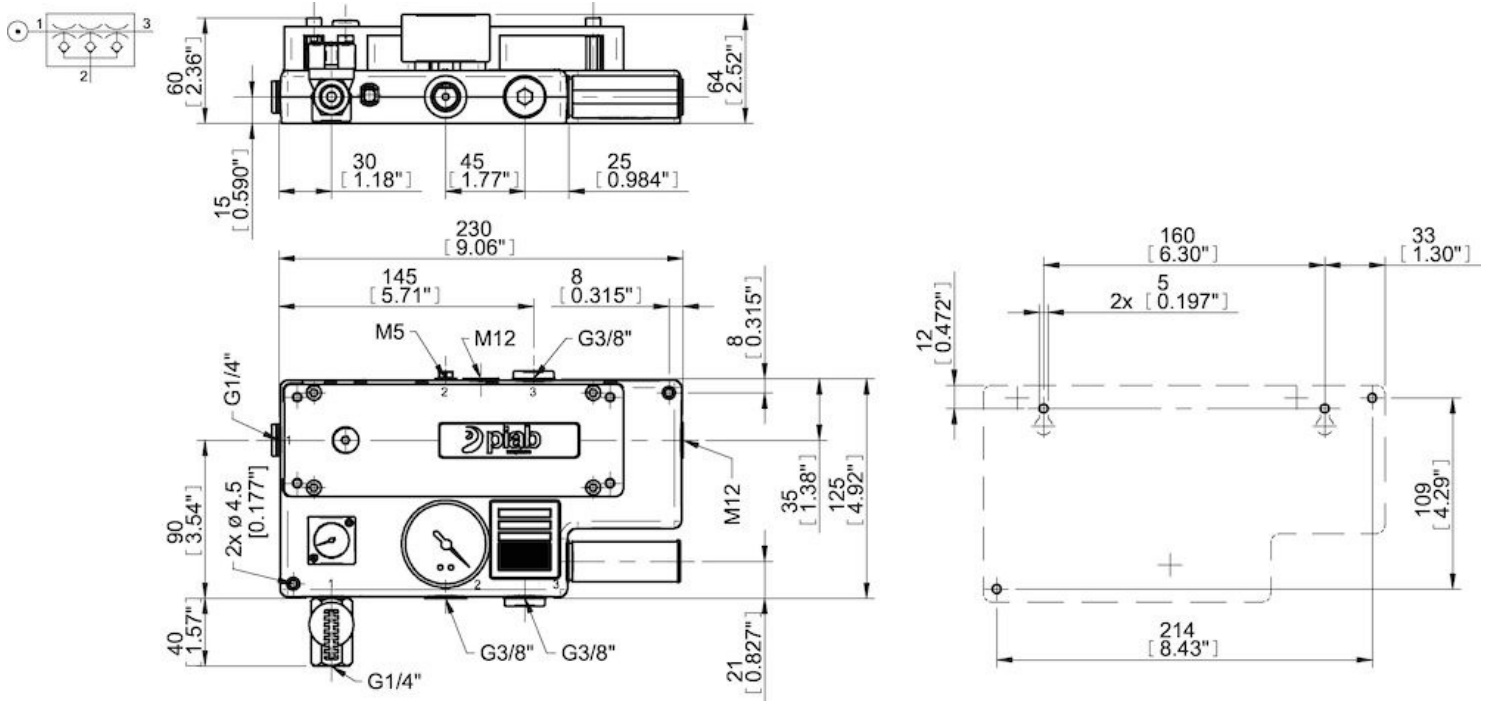
Description	Unit	Value
Material	-	Al, Kalrez, PPS, SS, Viton®
Temperature, max.	°C	110
Temperature, min.	°C	-20
Weight, min.	g	1500
Feed pressure, max.	MPa	0.7
Noise level, max.	dBA	66
Noise level, min.	dBA	62

### Performance

Feed pressure MPa	Air consumption Nl/s	Vacuum flow (Nl/s) at different vacuum levels (-kPa)														Max vacuum kPa
		0	10	20	30	40	50	60	70	75	80	90	95	99		
0.6	2.6	2.5	1.8	1.3	0.7	0.53	0.35	0.24	0.16	0	0.12	0.06	0.02	0	≥98	

Feed pressure MPa	Air consumption Nl/s	Evacuation time (s/l) to reach different vacuum levels (-kPa)														Max vacuum kPa
		10	20	30	40	50	60	70	80	90	95	99	99.5	100.3		
0.6	2.6	0.04	0.09	0.18	0.41	0.71	1.09	1.65	2.48	3.91	6.01	0	0	0	≥98	

## Dimensional drawings



### Values specified in this datasheet are tested at (unless otherwise stated):

- Room temperature (20°C [68°F] ± 3°C [5.5°F]).
- Standard atmosphere (101.3 [29.9 inHg] ± 1.0 kPa [0.3 inHg]).
- Compressed air quality, DIN ISO 8573-1 class 4.

### Tolerance and accuracy:

- Feed pressure tolerance ±0.02 MPa [2.9 psi]
- Vacuum flow/evacuation time accuracy ±10%.

### Accessories

0100947 | Vacuum filter 0.3 µm

0118100 | piSAVE® onoff with small hysteresis

### Spare parts

0104948 | Spare part kit Lab Vac 40-80, Kalrez/Viton®