

John Guest MDPE Compression Stop End

Securely and quickly caps off MDPE pipework either temporarily or permanently

Overview

John Guest MDPE Compression Stop End is designed to provide a secure and reliable termination point for MDPE pipework, suitable for both temporary and permanent applications.

Manufactured with a compact and durable design, the fitting is suited for cold water service installations where future system expansion may be anticipated.

Supplied pre-assembled and installation-ready, it offers a quick and efficient solution without the need for specialist tools or heat-based joining methods. The demountable connection makes it easy to work with in the ground during maintenance or alteration of an existing setup.



Features & Benefits

- Durable MDPE Compression Stop End
- Secure pipe termination provides a sealed, pressure-resistant end point for an MDPE pipework system
- Strong compression connection for a leak-free joint without the need for heat or chemicals
- Quick and easy to install and demount without the need for specialist tools
- High-grade polypropylene body for durability and high impact resistance
- Corrosion-resistant and inhibits biological growth, making it suitable for outdoor and underground use
- Compatible with MDPE pipes only
- Suitable for cold water use only

Product code	Description	Bag QTY
UGCF4620	John Guest MDPE Compression Stop End - 20mm	20
UGCF4625	John Guest MDPE Compression Stop End - 25mm	20
UGCF4632	John Guest MDPE Compression Stop End - 32mm	10



John Guest MDPE Compression Stop End

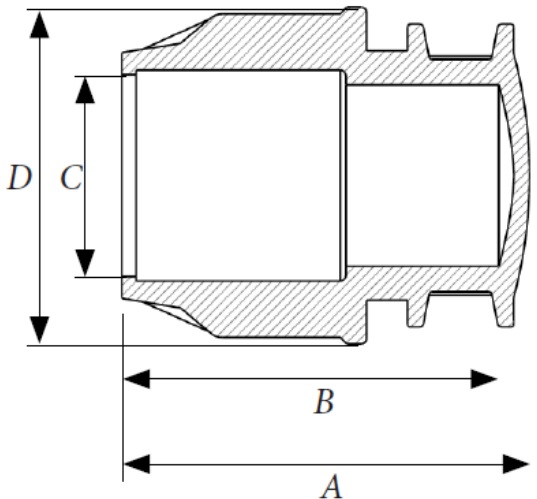
Operating Pressure & Temperature

Fittings are suitable for working pressures up to 16 bar at 20°C

Materials

Body	Polypropylene Copolymer (PP-B)
O-Ring	Nitrile rubber (NBR 70)
Insert Sleeve	Polypropylene Copolymer (PP-B)
Split Ring	Polyacetal (POM)
Compression Nut	Polypropylene Copolymer (PP-B)

Dimensions – All measurements in mm unless otherwise stated



Product Code	Size	A	B	C	D
UGCF4620	20mm	63.0	57.0	22.0	46.0
UGCF4625	25mm	73.0	68.0	27.0	52.0
UGCF4632	32mm	76.0	69.0	33.5	62.5