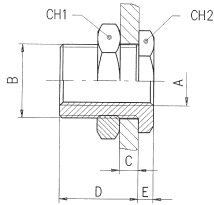




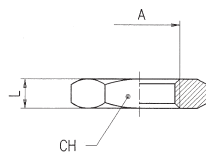
# Nickel Plated Brass Adaptors

## Bulkhead Connector



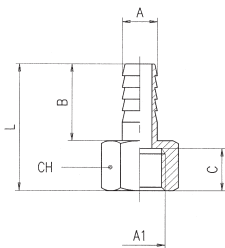
Code	A	B	C MAX	D	E	CH1	CH2
3060-M5	M5	M10 x 1	7	10.5	3.5	14	14
3060-1/8	1/8"	M16 x 1.5	10	14	4	22	19
3060-1/4	1/4"	M20 x 1.5	16	21	4	27	24
3060-3/8	3/8"	M26 x 1.5	15	21	5	32	30
3060-1/2	1/2"	M28 x 1.5	21	27	6	36	32

## Lock Nut



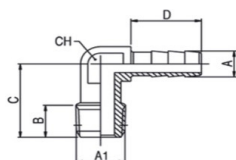
Code	A	L	CH
KM10WN	1/8"	4.5	14
KM13WN	1/4"	5	17
KM17WN	3/8"	6	20
KM21WN	1/2"	6	24

## Female Hose Tail Fixed



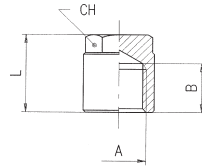
Code	A	A1	B	C	L	CH
FHT7/10	7	1/8"	19.5	8.5	30	14
FHT7/13	7	1/4"	19.5	11	32.5	17
FHT8/13	8	1/4"	19.5	11	32.5	17
FHT9/13	9	1/4"	19.5	11	32.5	17
FHT9/17	9	3/8"	19.5	11.5	33.5	20
FHT10/17	10	3/8"	19.5	11.5	33.5	20
FHT12/17	12	3/8"	19.5	11.5	33.5	20
FHT12/21	12	1/2"	19.5	14.5	37.5	24

## Brass Elbows, Male Thread BSPT x Hose Tail



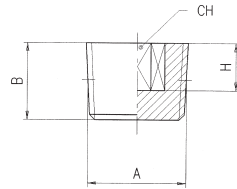
Code	A	A1	B	C	D	CH
3055-6-1/8	6	1/8"	7.5mm	17mm	14mm	11mm
3055-6-1/4	6	1/4"	11mm	22mm	14mm	11mm
3055-9-1/4	9	1/4"	11mm	22mm	14mm	11mm

## Blanking Cap

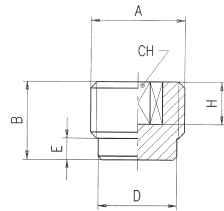


Code	A	B	L	CH
VK10	1/8"	7.5	11	12
VK13	1/4"	11	19	14
VK17	3/8"	11.5	20	17
VK21	1/2"	14	22	19
VK26	3/4"	-	15	30
VK33	1"	-	15	37

## Male Plugs

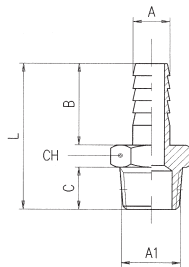
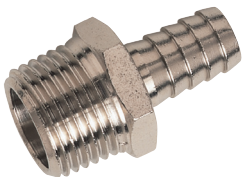


Code	A	B	H	CH
3025-1/8	1/8"	7.5	5	5
3025-1/4	1/4"	10	7	6
3025-3/8	3/8"	11	7	8
3025-1/2	1/2"	13	8	10



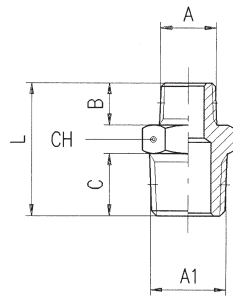
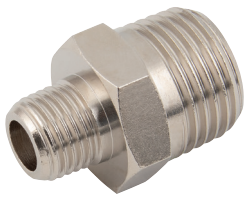
Code	A	B	D	E	H	CH
3026-1/8	1/8"	8	8	2	5	5
3026-1/4	1/4"	11	11	3	7	6
3026-3/8	3/8"	12.5	14.5	3.5	8.5	8
3026-1/2	1/2"	14	18	4	10	10
3026-3/4	3/4"	14	21.5	3	10	12

## Male x Hose Tails

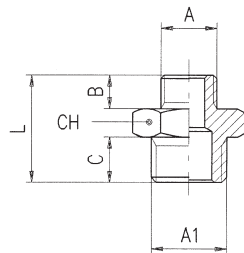


Code	A	A1	B	C	L	CH
3040-6-1/8	6	1/8"	19.5	7.5	32	12
3040-6-1/4	6	1/4"	19.5	11	35.5	14
3040-7-1/8	7	1/8"	19.5	7.5	32	12
3040-7-1/4	7	1/4"	19.5	11	35.5	14
3040-8-1/8	8	1/8"	19.5	7.5	32	12
3040-8-1/4	8	1/4"	19.5	11	35.5	14
3040-9-1/8	9	1/8"	19.5	7.5	32	12
3040-9-1/4	9	1/4"	19.5	11	35.5	14
3040-9-3/8	9	3/8"	19.5	11.5	36	17
3040-9-1/2	9	1/2"	19.5	14	39	22
3040-10-1/8	10	1/8"	19.5	7.5	32	12
3040-10-1/4	10	1/4"	19.5	11	35.5	14
3040-10-3/8	10	3/8"	19.5	11.5	36	17
3040-10-1/2	10	1/2"	19.5	14	39	22
3040-12-1/4	12	1/4"	19.5	11	35.5	14
3040-12-3/8	12	3/8"	19.5	11.5	36	17
3040-12-1/2	12	1/2"	19.5	14	39	22
3040-14-3/8	14	3/8"	19.5	11.5	36	17
3040-14-1/2	14	1/2"	19.5	14	39	22
3040-16-3/8	16	3/8"	19.5	11.5	36	17
3040-16-1/2	16	1/2"	19.5	14	39	22
3040-16-3/4	16	3/4"	19.5	16.5	43.5	27
3040-17-3/8	17	3/8"	19.5	11.5	36	18
3040-17-1/2	17	1/2"	19.5	14	39	22
3040-18-3/8	18	3/8"	19.5	11.5	36	19
3040-18-1/2	18	1/2"	19.5	14	39	22
3040-18-3/4	18	3/4"	19.5	16.5	43.5	27
3040-20-3/8	20	3/8"	19.5	11.5	36	21

## Male Adaptors - Unequal

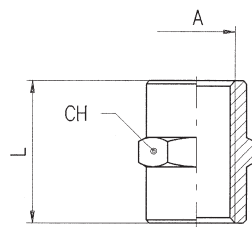


Code	A	A1	B	C	L	CH
DN10/13K	1/8"	1/4"	7.5	11	23.5	14
DN10/17K	1/8"	3/8"	7.5	11.5	24	17
DN10/21K	1/8"	1/2"	7.5	14	27	22
DN13/17K	1/4"	3/8"	11	11.5	27.5	17
DN13/21K	1/4"	1/2"	11	14	30.5	22
DN17/21K	3/8"	1/2"	11.5	14	31	22
DN21/26K	1/2"	3/4"	14	16.5	37.5	27
DN26/33K	3/4"	1"	16.5	19	44	34
DN33/42K	1"	1.1/4"	20.5	22	50	45
DN42/50K	1.1/4"	1.1/2"	22	22	53	55
DN50/55K	1.1/2"	2"	24	25.5	59	67



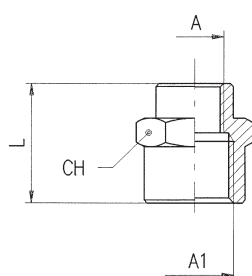
Code	A	A1	B	C	L	CH
DN05/10	M5	1/8"	4	6	14.5	14
DN10/13	1/8"	1/4"	6	8	19	17
DN10/17	1/8"	3/8"	6	9	20	19
DN13/17	1/4"	3/8"	8	9	22	19
DN13/21	1/4"	1/2"	8	10	23.5	24
DN17/21	3/8"	1/2"	9	10	24.5	24
DN21/26	1/2"	3/4"	10	12	27.5	30
DN26/33	3/4"	1"	11	12	29.5	36
DN33/42	1"	1.1/4"	19	21	49	45
DN42/50	1.1/4"	1.1/2"	-	-	-	-
DN50/55	1.1/2"	2"	24	25	58.5	65

## Female Socket - Equal



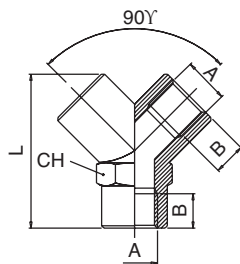
Code	A	L	CH
MU05	M5	11	8
MU10	1/8"	15	14
MU13	1/4"	22	17
MU17	3/8"	24	22
MU21	1/2"	30	26
MU26	3/4"	32	32
MU33	1"	46	40

## Female Socket - Unequal



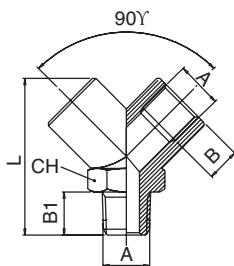
Code	A	A1	L	CH
MU05/10	M5	1/8"	13	14
MU10/13	1/8"	1/4"	19	17
MU10/17	1/8"	3/8"	20	22
MU10/21	1/8"	1/2"	24	24
MU13/17	1/4"	3/8"	23	22
MU13/21	1/4"	1/2"	25	24
MU17/21	3/8"	1/2"	27.5	24
MU17/26	3/8"	3/4"	25	32
MU21/26	1/2"	3/4"	30	30
MU21/33	1/2"	1"	39	40
MU26/33	3/4"	1"	41	40

## Y Connector



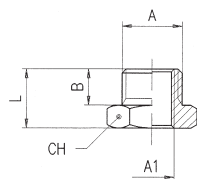
Code	A	B	L	CH
ZO-10	1/8"	8.5	33	14
ZO-13	1/4"	11	37	17
ZO-17	3/8"	11.5	46	22
ZO-21	1/2"	14	58	26

## Y Connector - Male Inlet

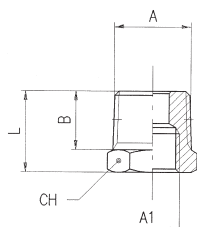


Code	A	B	B1	L	CH
XO-10	1/8"	8.5	9	33	14
XO-13	1/4"	11	11	37	17
XO-17	3/8"	11.5	12.5	46	22
XO-21	1/2"	14	16.5	58	26

## Reducing Bush

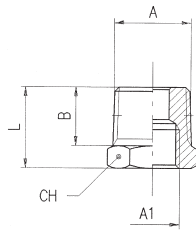


Code	A	A1	B	L	CH
RK05/10	1/8"	M5	6	10.6	14
RK10/13	1/4"	1/8"	8	13	17
RK10/17	3/8"	1/8"	9	14	19
RK10/21	1/2"	1/8"	10	15.5	24
RK13/17	3/8"	1/4"	9	14	19
RK13/21	1/2"	1/4"	10	15.5	24
RK13/26	3/4"	1/4"	12	17.5	30
RK17/21	1/2"	3/8"	10	15.5	24
RK17/26	3/4"	3/8"	12	17.5	30
RK17/33	1"	3/8"	13	19	36
RK21/26	3/4"	1/2"	12	17.5	30
RK21/33	1"	1/2"	12.5	20	33
RK26/33	1"	3/4"	13	19	36
RK33/42	1.1/4"	1"	22	29.5	49
RK42/50	1.1/2"	1.1/4"	25	33.5	55
RK42/55	2"	1.1/4"	24	34.5	65
RK50/55	2"	1.1/2"	24	36	65



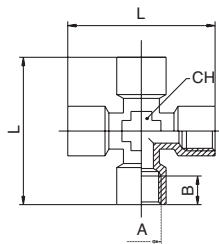
Code	A	A1	B	L	CH
RK10/13K	1/4"	1/8"	11	16	14
RK10/17K	3/8"	1/8"	11.5	16.5	17
RK10/21K	1/2"	1/8"	14	19.5	22
RK13/17K	3/8"	1/4"	11.5	16.5	17
RK13/21K	1/2"	1/4"	14	19.5	22
RK13/26K	3/4"	1/4"	16.5	23.5	27
RK17/21K	1/2"	3/8"	14	19.5	22
RK17/26K	3/4"	3/8"	16.5	23.5	27
RK17/33K	1"	3/8"	17	25	34
RK21/26K	3/4"	1/2"	16.5	23.5	27
RK21/33K	1"	1/2"	19	27.5	34
RK21/42K	1.1/4"	1/2"	22	31	45
RK26/33K	1"	3/4"	19	27.5	34
RK33/42K	1.1/4"	1"	22	31	45
RK33/50K	1.1/2"	1"	22	32	50
RK42/55K	2"	1.1/4"	25.5	35	66
RK50/55K	2"	1.1/2"	26	35	65

## Reducing Bush

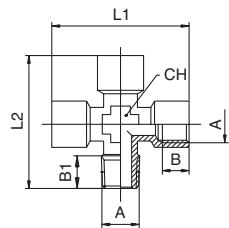


Code	A	A1	L
2095-10/M5	1/8"	M5	7.5
2095-13/10	1/4"	1/8"	8
2095-17/10	3/8"	1/8"	9.1
2095-17/13	3/8"	1/4"	9
2095-21/13	1/2"	1/4"	10.6
2095-21/17	1/2"	3/8"	10
2095-26/21	3/4"	1/2"	14
2095-33/26	1"	3/4"	20

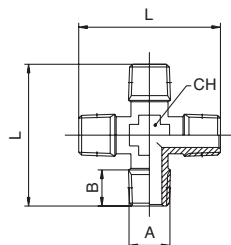
## Equal Crosses



Code	A	B	L	CH
FC10	1/8"	8.5	39	11
FC13	1/4"	11	50	13
FC17	3/8"	12	56	17
FC21	1/2"	15	64	20

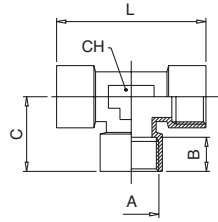


Code	A	B	B1	L1	L2	CH
FD10	1/8"	8.5	8	39	37	11
FD13	1/4"	11	11	50	48.5	13
FD17	3/8"	12	11.5	56	54	17
FD21	1/2"	15	14	64	61	20

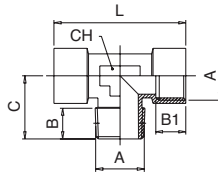
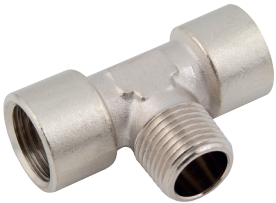


Code	A	B	L	CH
FE10	1/8"	8	35	11
FE13	1/4"	11	47	13
FE17	3/8"	11.5	52	17
FE21	1/2"	14	58	20

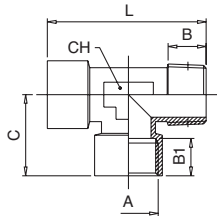
# Equal Tees



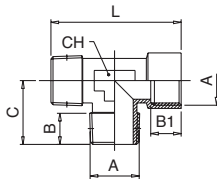
Code	A	B	C	L	CH
TIM5	M5	5	8.5	17	8
TI10	1/8"	8.5	19.5	39	12
TI13	1/4"	11	24.5	49	13
TI17	3/8"	12	27	54	16
TI21	1/2"	15	32	64	20
TI26	3/4"	16.5	36.5	73	27
TI33	1"	19	45	90	30



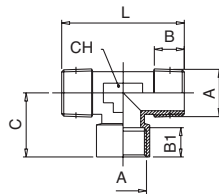
Code	A	B	C	L	CH
TKL10	1/8"	8	17.5	39	12
TKL13	1/4"	11	23	49	13
TKL17	3/8"	11.5	25.5	54	16
TKL21	1/2"	14	29.5	64	20
TKL26	3/4"	14.5	32	73	27
TKL33	1"	16.8	39	90	30
TI33	1"	19	45	90	30



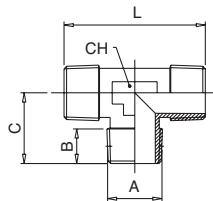
Code	A	B	B1	C	L	CH
TB10	1/8"	8	8.5	19.5	37	12
TB13	1/4"	11	11	24.5	47.5	13
TB17	3/8"	11.5	12	27	52.5	16
TB21	1/2"	14	15	32	61.5	20
TB26	3/4"	14.5	16.5	36.5	68.5	27
TB33	1"	16.8	19	45	84	30
TI33	1"	19	45	90	30	30



Code	A	B	B1	C	L	CH
TD10	1/8"	8	8.5	17.5	37	12
TD13	1/4"	11	11	23	47.5	13
TD17	3/8"	11.5	12	25.5	52.5	16
TD21	1/2"	14	15	29.5	61.5	20
TD26	3/4"	14.5	16.5	32	68.5	27
TD33	1"	16.8	19	39	84	30

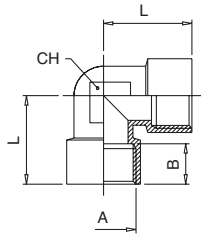


Code	A	B	B1	C	L	CH
TCM5	M5	-	-	-	-	-
TC10	1/8"	8	8.5	19.5	35	12
TC13	1/4"	11	11	24.5	46	13
TC17	3/8"	11.5	12	27	51	16
TC21	1/2"	14	15	32	59	20
TC26	3/4"	14.5	16.5	36.5	64	27
TC33	1"	16.8	19	45	78	30

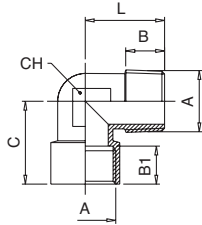


Code	A	B	C	L	CH
TA10	1/8"	8	17.5	35	12
TA13	1/4"	11	23	46	13
TA17	3/8"	11.5	25.5	51.5	16
TA21	1/2"	14	29.5	59	20
TA26	3/4"	14.5	32	64	27
TA33	1"	16.8	39	78	30

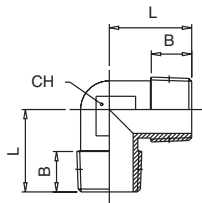
## Equal Elbows



Code	A	B	L	CH
WIM5	M5	5.5	11	9
WI10	1/8"	8.5	21	11
WI13	1/4"	11	25.5	13
WI17	3/8"	11.5	28	17
WI21	1/2"	15	32	20
WI26	3/4"	16.5	36.5	27
WI33	1"	19	45	30

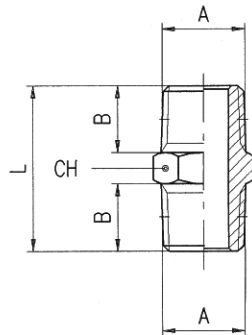


Code	A	B	B1	C	L	CH
WSLM5	M5	4	5.5	11.5	11.5	9
WSL10	1/8"	7.5	8.5	21	18	11
WSL13	1/4"	11	11	25.5	24	13
WSL17	3/8"	11.5	12	28	27	17
WSL21	1/2"	14	15	32	29.5	20
WSL26	3/4"	14.5	16.5	36.5	32	27
WSL33	1"	16	19	45	39	30

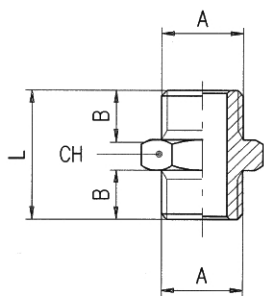


Code	A	B	L	CH
WAM5	M5	4	11.9	9
WA10	1/8"	7.5	18	11
WA13	1/4"	11	24	13
WA17	3/8"	12	27	17
WA21	1/2"	14	29.5	20
WA26	3/4"	14.5	32	27
WA33	1"	16.8	39	30

## Equal

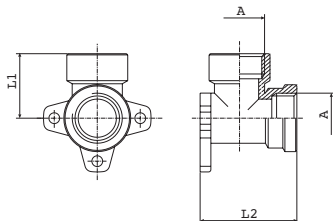


Code	A	B	L	CH
DN10/10K	1/8"	7.5	19.5	12
DN13/13K	1/4"	11	27	14
DN17/17K	3/8"	11.5	28	17
DN21/21K	1/2"	14	33.5	22
DN26/26K	3/4"	16.5	40	27
DN33/33K	1"	19	46.5	34
DN42/42K	1.1/4"	20.5	50	8
DN50/50K	1.1/2"	-	-	-
DN55/55K	2"	2.2	58.5	9.5



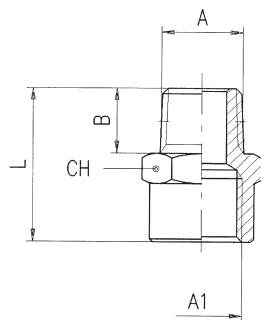
Code	A	B	L	CH
DN05/05	M5	4	11.5	8
DN10/10	1/8"	6	16.5	14
DN13/13	1/4"	8	21	17
DN17/17	3/8"	9	23	19
DN21/21	1/2"	10	25.5	24
DN26/26	3/4"	12	29.5	30
DN33/33	1"	12	32	40
DN42/42	1.1/4"	20.5	49.5	8
DN50/50	1.1/2"	21.5	54	10
DN55/55	2"	-	-	-

## 90° Female Wall Bracket Fitting

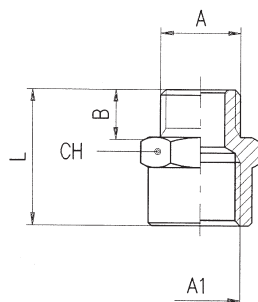


Code	A	L1	L2
5050-1/2	1/8"	27	40.5

# Male x Female Adaptors



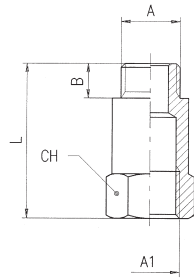
Code	A	A1	B	L	CH
RL10/10K	1/8"	1/8"	7.5	20	14
RL10/13K	1/8"	1/4"	7.5	22	17
RL10/17K	1/8"	3/8"	7.5	23	22
RL13/13K	1/4"	1/4"	11	26	17
RL13/17K	1/4"	3/8"	11	27	22
RL13/21K	1/4"	1/2"	11	30	26
RL17/17K	3/8"	3/8"	11.5	27.5	22
RL17/21K	3/8"	1/2"	11.5	30.5	26
RL17/26K	3/8"	3/4"	11	28	32
RL21/21K	1/2"	1/2"	14	33	26
RL21/26K	1/2"	3/4"	14	36	32
RL21/33K	1/2"	1"	13	30	38
RL26/26K	3/4"	3/4"	15.5	32.5	30
RL26/33K	3/4"	1"	12.5	30.5	38
RL33/33K	1"	1"	15.5	32.5	38



Code	A	A1	B	L	CH
RL05/05	M5	M5	-	-	-
RL05/10	M5	1/8"	4	14.5	14
RL10/10	1/8"	1/8"	6	17	14
RL10/13	1/8"	1/4"	6	20.5	17
RL10/17	1/8"	3/8"	6	21.5	22
RL13/13	1/4"	1/4"	8	22.5	17
RL13/17	1/4"	3/8"	8	23.5	22
RL13/21	1/4"	1/2"	8	26.5	26
RL17/17	3/8"	3/8"	9	24.5	22
RL17/21	3/8"	1/2"	9	27.5	26
RL17/26	3/8"	3/4"	9	25.5	30
RL21/21	1/2"	1/2"	10	28.5	26
RL21/26	1/2"	3/4"	10	27	30
RL21/33	1/2"	1"	11	28.5	38
RL26/26	3/4"	3/4"	11.5	28	32
RL26/33	3/4"	1"	11	28	38
RL33/33	1"	1"	13	31	38

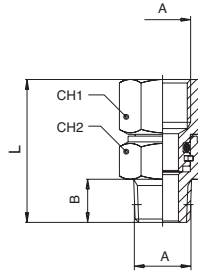


## Male x Female Adaptors

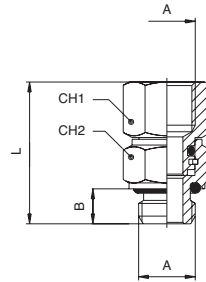


Code	A	A1	L	B	CH
RL10/10X	1/8"	1/8"	22	6	14
RL10/10Y	1/8"	1/8"	42	6	14
RL13/13X	1/4"	1/4"	35	8	17
RL13/13Y	1/4"	1/4"	51	8	17
RL17/17X	3/8"	3/8"	41	9	22
RL21/21X	1/2"	1/2"	35	10	26
RL26/26X	3/4"	3/4"	50	12	30
RL33/33X	1"	1"	50	13	38

## Swivel Connectors - Equal

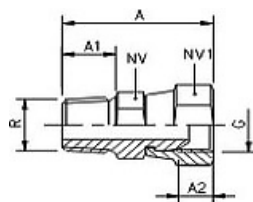
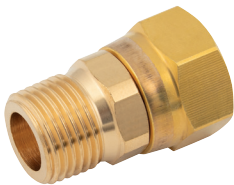


Code	A	B	CH1	CH2	L
2110-18	1/8"	7.5	13	13	25
2110-14	1/4"	11	16	15	33
2110-38	3/8"	11.5	20	17	35.5



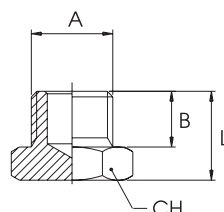
Code	A	B	CH1	CH2	L
2115-18	1/8"	6	13	13	24.5
2115-14	1/4"	8	16	16	31
2115-38	3/8"	9	20	18	34.5

## Swivel Adaptors

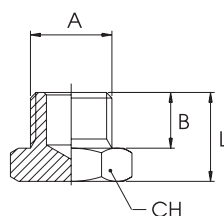


Code	Thread G	Thread R	A	A1	A2	NV	NV1
SF10	1/8"	1/8"	27.7	10	7	14	14
SF13	1/4"	1/4"	31	11	8	14	17
SF17	3/8"	3/8"	36.5	13	10	17	21
SF21	1/2"	1/2"	42.5	16	12	22	26

## Blanking Plugs



Code	A	B	L	CH
VZ05	M5	4.5	8	8
VZ10	1/8"	6.5	10	14
VZ13	1/4"	9	13	17
VZ17	3/8"	9.5	13.5	19
VZ21	1/2"	10	14.5	24
VZ26	3/4"	11	16	30
VZ33	1"	12	17	40



Code	A	B	L	D	CH
ZV-10	1/8"	6	8.5	14	5
ZV-13	1/4"	8	11	17	6
ZV-17	3/8"	9	12.5	20	8
ZV-21	1/2"	10	13.5	25	10