

Vacuplus MINI Si08-2

Article number: 0223780

- Small and compact sizes
- Symmetric vacuum interfaces on top and bottom ensures flexible installation
- Patented COAX® technology



Technical data

Description	Unit	Value
Material	-	Al, Nitrile (NBR), POM, SS
Temperature, max.	°C	50
Temperature, min.	°C	-10
Weight, max.	g	72
Feed pressure, max.	MPa	0.7
Noise level, max.	dBA	74
Noise level, min.	dBA	60

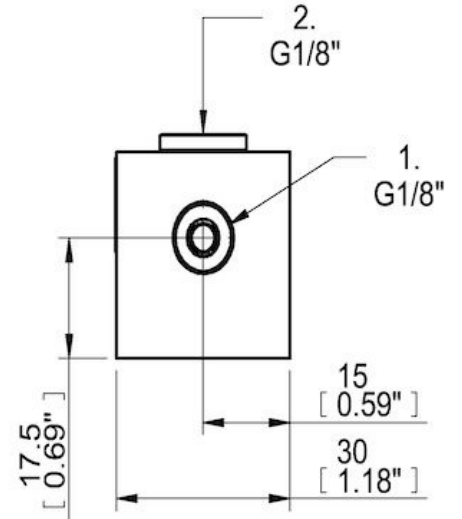
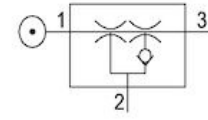
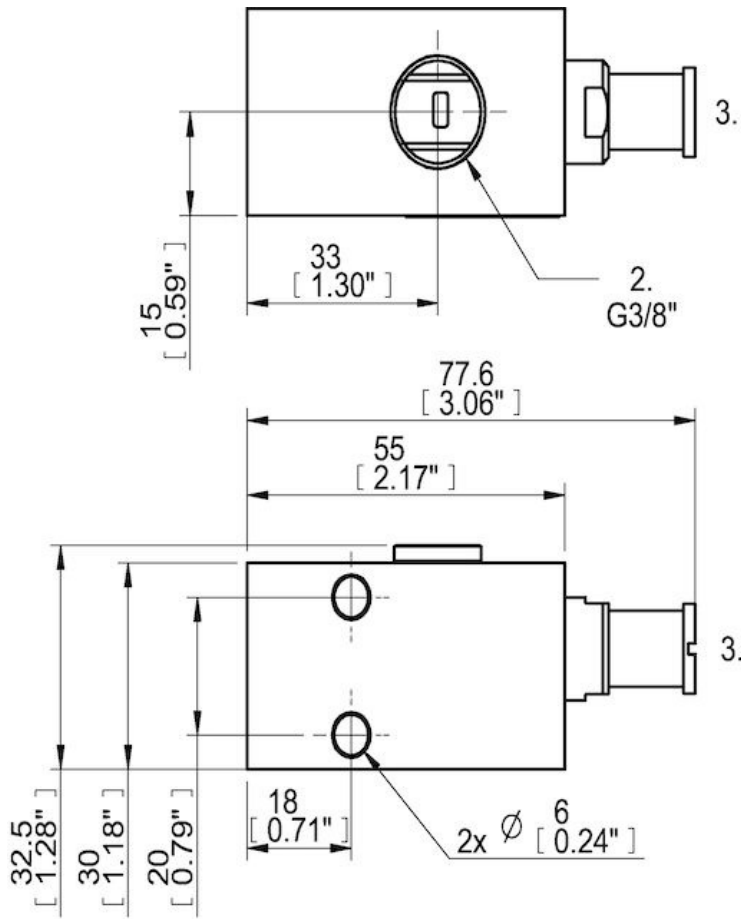
Performance

Feed pressure MPa	Air consumption NI/s	Vacuum flow (NI/s) at different vacuum levels (-kPa)														Max vacuum kPa
		0	10	20	30	40	50	60	70	75	80	90	95	99		
0.4	0.31	0.71	0.53	0.34	0.26	0.18	0.09	0.01	0	0	0	0	0	0	0	≥60
0.6	0.44	0.77	0.67	0.51	0.33	0.23	0.16	0.12	0.08	0	0	0	0	0	0	≥75

Feed pressure MPa	Air consumption NI/s	Evacuation time (s/l) to reach different vacuum levels (-kPa)														Max vacuum kPa
		10	20	30	40	50	60	70	80	90	95	99	99.5	100.3		
0.4	0.31	0.16	0.39	0.72	1.2	1.9	3.9	0	0	0	0	0	0	0	0	≥60
0.6	0.44	0.14	0.31	0.55	0.9	1.4	2.1	3.1	0	0	0	0	0	0	0	≥75

Feed pressure MPa	Air consumption NI/s	Blow flow (NI/s) at different pressure levels (-kPa)														Max pressure kPa	
		0	10	20	30	40	50	60	70	80	90	100	110	120	130		140
0.6	0.44	1.21	1.13	1	0.84	0.78	0.73	0.65	0.53	0	0	0	0	0	0	0	≥75

Dimensional drawings



Values specified in this datasheet are tested at (unless otherwise stated):

- Room temperature (20°C [68°F] ± 3°C [5.5°F]).
- Standard atmosphere (101.3 [29.9 inHg] ± 1.0 kPa [0.3 inHg]).
- Compressed air quality, DIN ISO 8573-1 class 4.

Tolerance and accuracy:

- Feed pressure tolerance ±0.02 MPa [2.9 psi]
- Vacuum flow/evacuation time accuracy ±10%.