



Accessories

Ball Vibrators

'JM' Series

General Information

- 1 Minimum operating pressure 2 bar (30psi).
- 2 Max working pressure 6 bar (90psi).
 - Warning - exceeding the maximum working pressure of 6 bar, will result in faults or destruction of the vibrator.
- 3 Noise level from 75 – 95 dBA.
 - It is imperative that the silencer is cleaned on a regular basis as a back pressure may be created within the internal working of the vibrator and cause malfunction.
- 4 Medium – Compressed Air & Nitrogen.
- 5 Ambient temperature shall not exceed 100°C (220°F).



Installation

- 1 Mounting must always be conducted on a solid, clean and even surface. If mounting surface has any welding joints they must be of adequate strength.
 - Make sure that the air pressure is turned off before installing and before any maintenance of the vibrator.
 - The air should be clean, filtered and lubricated to ensure long life of the product, ISO VG 15 lubricant is recommended or any other suitable oil with a viscosity of 15 cST/40°C.
 - 2 The Vibrators are suitable for indoor and outdoor applications.
 - When fitting in an outside environment please ensure that the exhaust ports are ported / piped in a downward position to avoid any water ingress.
 - 3 Always ensure that there is a silencer fitted to the exhaust port.
 - Check exhaust ports and silencers regularly to avoid any dirt blocking the exhaust ports, if this is not carried out regularly this will lead to failure of the product.
 - It is advisable to use a thread lock (LOCTITE 270) when fixing any fittings or mounting screws to the vibrator, and the use of anti-vibration nuts & washers.
 - The vibrators must be ported correctly by using the arrow as a guide, the inlet port is the smaller hole marked with the arrow.
 - Allen screws must be used when mounting the vibrator, the use of slotted screws must be avoided.
- The torque when tightening must not exceed the following values;

| Ref Numbers | Thread | Tightening Torque | |
|----------------------------|--------|-------------------|-------|
| | | Min. | Max. |
| JM8 & JM10 | M6 | 6 Nm | 10 Nm |
| JM13, JM16, JM20 & JM25 | M8 | 15 Nm | 21 Nm |
| JM30 & JM36 | M10 | 30 Nm | 42 Nm |

Safety

- Regularly check all fixings and connections to ensure that they have not worked loose.
- Always wear ear protection when in the vicinity of the working vibrators.
- Always fit a silencer to the exhaust port.

Accessories

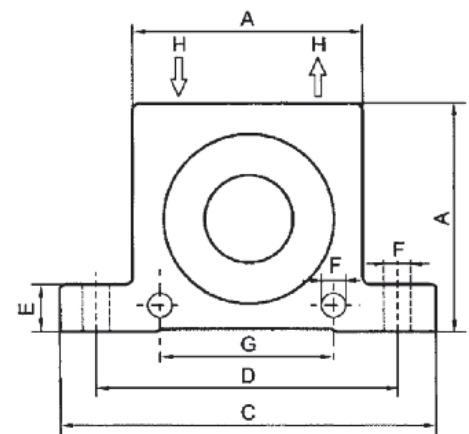
Ball Vibrators

‘JM’ Series



Performance Data

| Model | Frequency V.P.M. | | | Centrifugal Force Measured | | | Air Consumption/Minute | | |
|-------|------------------|--------|--------|----------------------------|--------|--------|------------------------|--------|--------|
| | 0.2Mpa | 0.4Mpa | 0.6Mpa | 0.2Mpa | 0.4Mpa | 0.6Mpa | 0.2Mpa | 0.4Mpa | 0.6Mpa |
| | | | | N | N | N | Ltr. | Ltr. | Ltr. |
| JM8 | 25510 | 31100 | 35100 | 132 | 249 | 355 | 85 | 150 | 190 |
| JM10 | 22510 | 28100 | 34100 | 245 | 468 | 715 | 95 | 155 | 210 |
| JM13 | 15100 | 18500 | 22510 | 32 | 56 | 875 | 95 | 160 | 230 |
| JM16 | 13100 | 17100 | 19510 | 455 | 81 | 1110 | 125 | 210 | 285 |
| JM20 | 10510 | 14510 | 16510 | 715 | 1200 | 1750 | 135 | 235 | 335 |
| JM25 | 9210 | 12210 | 14100 | 925 | 1580 | 2100 | 165 | 295 | 420 |
| JM30 | 7810 | 9710 | 12510 | 1520 | 2480 | 3250 | 220 | 980 | 545 |
| JM36 | 7310 | 9100 | 10100 | 2050 | 3135 | 4100 | 265 | 480 | 678 |



Dimensions

| Model | A (mm) | Width (mm) | C (mm) | D (mm) | E (mm) | F (mm) | G Thread | H Thread | Weight Kg |
|-------|--------|------------|--------|--------|--------|--------|----------|----------|-----------|
| JM8 | 50 | 20 | 86 | 68 | 12 | 7 | 40 | G1/4" | 0.135 |
| JM10 | | | | | | | | | 0.135 |
| JM13 | 65 | 29 | 113 | 90 | 16 | 9 | 50 | G1/4" | 0.265 |
| JM16 | | | | | | | | | 0.305 |
| JM20 | 80 | 39 | 128 | 104 | 16 | 9 | 60 | G1/4" | 0.540 |
| JM25 | | | | | | | | | 0.640 |
| JM30 | 100 | 50 | 160 | 130 | 20 | 11 | 80 | G1/4" | 1.140 |
| JM36 | | | | | | | | | 1.350 |